

DURA-SLEEVE

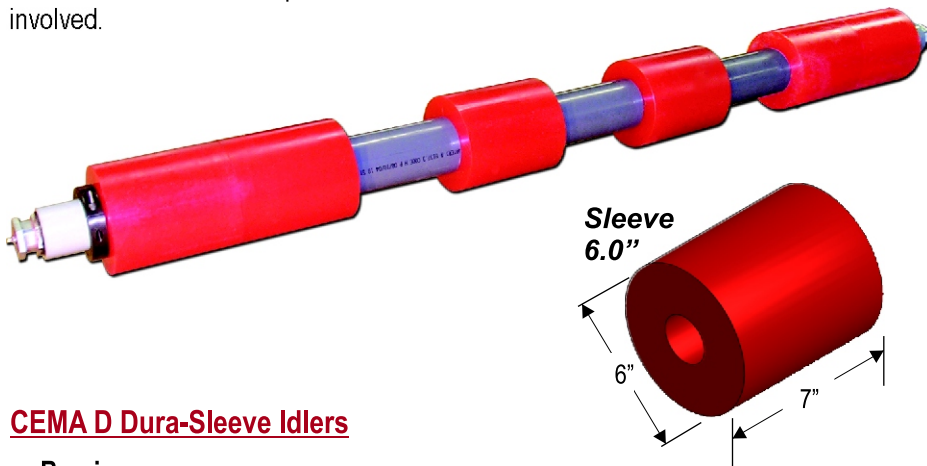
Urethane Disc Return Idlers

ASGCO[®]

Complete Conveyor Solutions

Dura-Sleeve Return Idlers are the Toughest, Longest Wearing Urethane Disc Idlers!

Dura-Sleeve Urethane Return Disc Idlers - are used on abrasive mining conditions such as iron ore, coke, copper / gold ores, underground coal mining and other hard rock mining conditions where traditional rubber disc and steel idlers don't last. They are also used when wet or sticky materials tend to cling to the belt, where corrosion resistance is required or where chemical reaction to iron or steel is involved.



CEMA D Dura-Sleeve Idlers

Bearings

- 30 mm (1.1811 inch bore) precision ball bearing with seals on both sides

Seals

- Quad horizontal labyrinth outer seal and dual lip nitrile rubber inner seal
- Delrin outer labyrinth member
- Bearings feature contact seals on both sides

Shaft

- Solid 30 mm (1.1811-inch) ASTM A-108 C1018 CD material
- 2" OD

Dura-Sleeves

- 6" OD x 7" long

CEMA E Dura-Sleeve Idlers

Bearings

- 40 mm (1.5748 inch bore) precision ball bearing with seals on both sides

Seals

- Quad horizontal labyrinth outer seal and dual lip nitrile rubber inner seal
- Delrin outer labyrinth member
- Bearings feature contact seals on both sides

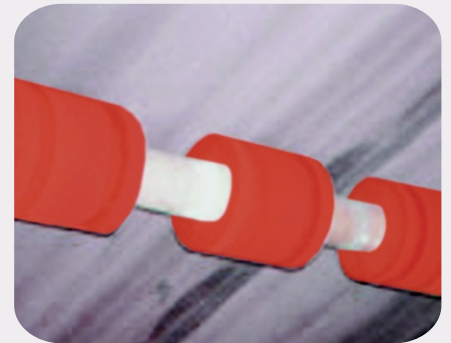
Shaft

- Solid 40 mm (1.5748-inch) ASTM A-108 C1018 CD material
- 2 3/4" OD

Dura-Sleeves

- 6" OD x 7" long

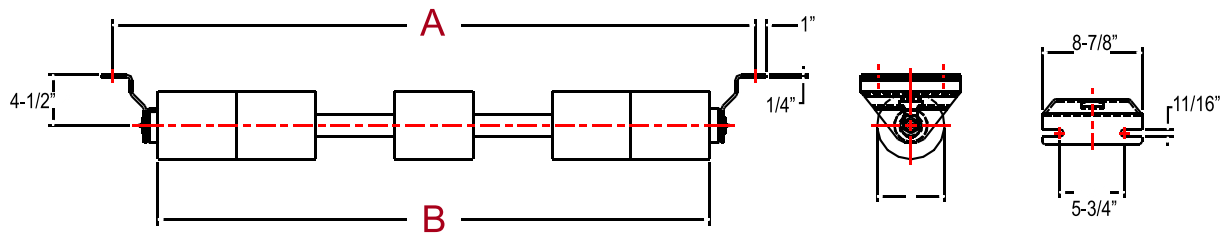
3 Year Guarantee
ASGCO offers the longest warranty on any Dura-Sleeve idler.



Patented Replaceable Sleeves are also available for both CEMA D and E idlers.

Our Dura-Sleeves prevent the conveyor belt from getting caught between conventional style rubber and urethane disc idlers.





Dura-Sleeve Part Numbers

CEMA D Belt Width +9"

Part Number	Belt Width (inches)	Number of Sleeves	A (inches)	B (inches)
M-ASG-D24BW9NS	24	3	33	26
M-ASG-D30BW9NS	30	3	39	32
M-ASG-D36BW9NS	36	4	45	38
M-ASG-D42BW9NS	42	4	51	44
M-ASG-D48BW9NS	48	5	57	50
M-ASG-D54BW9NS	54	5	63	56
M-ASG-D60BW9NS	60	5	69	62
M-ASG-D72BW9NS	72	6	81	74
M-ASG-D84BW9NS	84	7	93	86
M-ASG-D96BW9NS	96	8	105	98

CEMA D Belt Width +15"

Part Number	Belt Width (inches)	Number of Sleeves	A (inches)	B (inches)
M-ASG-D24BW15NS	24	3	39	26
M-ASG-D30BW15NS	30	3	45	32
M-ASG-D36BW15NS	36	4	51	38
M-ASG-D42BW15NS	42	4	57	44
M-ASG-D48BW15NS	48	5	63	50
M-ASG-D54BW15NS	54	5	69	56
M-ASG-D60BW15NS	60	5	75	62
M-ASG-D72BW15NS	72	6	87	74
M-ASG-D84BW15NS	84	7	99	86
M-ASG-D96BW15NS	96	8	111	98

CEMA E Belt Width +9"

Part Number	Belt Width (inches)	Number of Sleeves	A (inches)	B (inches)
M-ASG-E36BW9NS	36	4	45	38
M-ASG-E42BW9NS	42	4	51	44
M-ASG-E48BW9NS	48	5	57	50
M-ASG-E54BW9NS	54	5	63	56
M-ASG-E60BW9NS	60	5	69	62
M-ASG-E72BW9NS	72	6	81	74
M-ASG-E84BW9NS	84	7	93	86
M-ASG-E96BW9NS	96	8	105	98

CEMA E Belt Width +15"

Part Number	Belt Width (inches)	Number of Sleeves	A (inches)	B (inches)
M-ASG-E36BW15NS	36	4	51	38
M-ASG-E42BW15NS	42	4	57	44
M-ASG-E48BW15NS	48	5	63	50
M-ASG-E54BW15NS	54	5	69	56
M-ASG-E60BW15NS	60	5	75	62
M-ASG-E72BW15NS	72	6	87	74
M-ASG-E84BW15NS	84	7	99	86
M-ASG-E96BW15NS	96	8	111	98

