

ARMORITE™

WEAR BUTTONS

ASGCO®
Complete Conveyor Solutions

ASGCO **Armorite™** is an extremely hard, laminated bi-metallic, wear resistant composite, which has a nominal hardness of 700 BHN (63Rc) produced by combining a highly alloyed chromium-molybdenum white iron (to AS 2027 15/3 Cr/Mo) and metallurgically bonding it to a mild thick steel backing plate. The resultant bond possesses high shear strength of over 250 Mpa and will not separate.

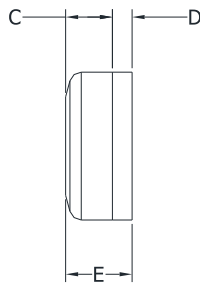
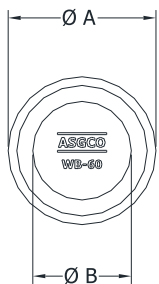
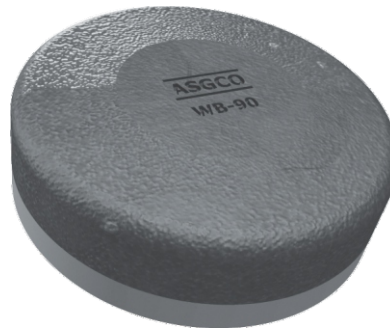
Armorite™ Wear Buttons are a circular domed shape wear part that provides maximum protection while minimizing the effects of impact. The round shape virtually eliminates any chance of a weld cracking.

- Ideal for small impact and wear areas
- Easy to use and install with no pre or post heating
- Great alternative to labor intensive hard facing



Armorite™ Applications

- Chute Linings
- Rock-Box Edges
- Grizzly Caps/Screens
- Transfer Points
- Impact Plates
- Distributor Plates
- Arm/Hub Liners
- Bin Liners
- Hopper Wear Plates
- Divider/Splitter Bars
- General Wear Protection
- Liner Panels



Product Features:

- White Iron: Modified AS2027 15/3 Cr Mo
- Vacuum brazed and liquid nitrogen cooled to achieve a high strength joint
- Mild steel backing offers strength, machinability, and impact resistance
- Can be welded in place, through-bolted, stud bolted, drilled, tapped, keyed
- Ease of fitment, very versatile

Bond Zone Layers



Part Number	Description	Diameter	Thick.	Wt.Lbs.
ASG-AMR-WB-90	Wear Button	3-9/16"	1-3/16"	-

Thickness White Iron 3/4" - Thickness Base Plate 3/8"

Providing the World Material Handling Industry with Productive, Safe and Reliable "Complete Conveyor Solutions."

301 Gordon Street . Allentown, PA 18102 . 1-800-344-4000 . Fax: 610-778-8991 . www.asgco.com