

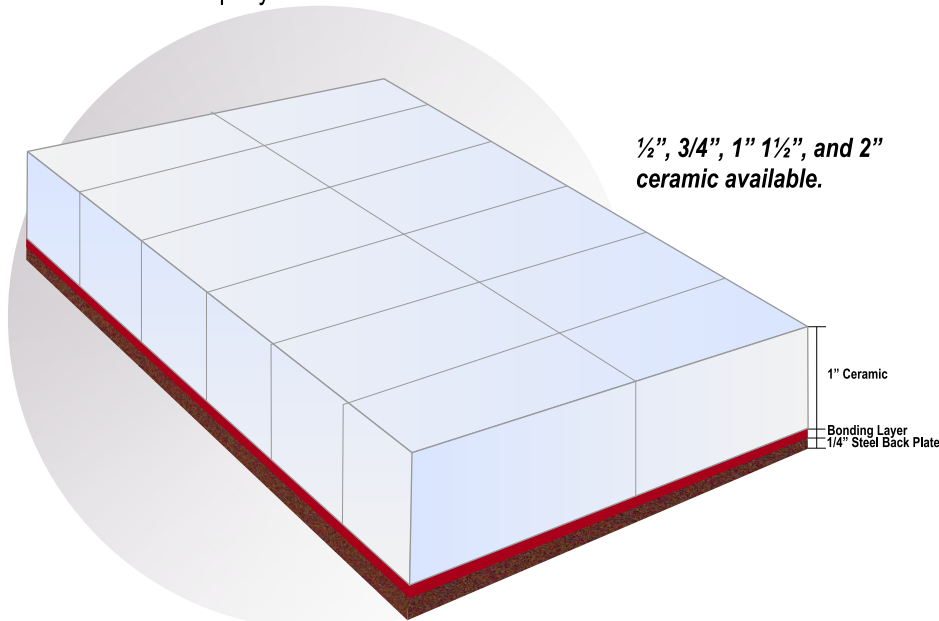
ASGCO X-WEAR™

Advanced Ceramic Wearplate

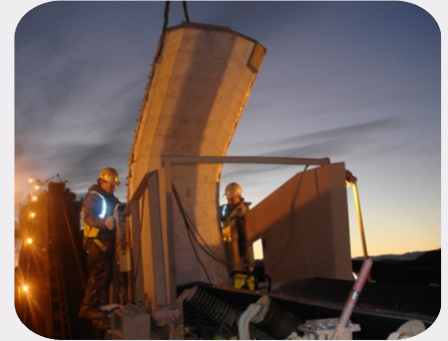
ASGCO®

Complete Conveyor Solutions

ASGCO X-Wear will substantially reduce your operating costs when compared to any other lining material. The ceramic is bonded to a 1/4" steel plate using impact resistant urethane epoxy.



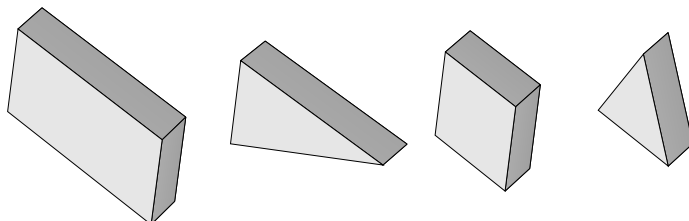
- **Material Flow** - The smooth laminar surface of X-WEAR provides the optimum sliding surface for material handling.
- **Custom** - The remarkable structural integrity of X-WEAR makes it ideal for direct retrofitting of worn out chutes and hoppers without expensive repairs.
- **Noise Reduction** - X-WEAR's energy absorbing design dramatically reduces noise.
- **1/4" Steel Backing** is suitable for stud welding or plug welding.
- **1/2", 3/4", 1" 1/2", and 2" ceramic available.**



ASGCO X-WEAR™ is a resilient wear resistant panel made up of High Density Abrasion Resistant Ceramic bonded to an Impact Resistant Steel Back Plate . It easily out performs steel, chromium carbide overlays and conventional ceramics.

Material Cost + Installation + Downtime = **CPT**
Tons Handled

X-Wear Chute Liners Available in Different Shapes:



Providing the World Material Handling Industry with Productive, Safe and Reliable "Complete Conveyor Solutions."

The Wear and Impact Resistant Alternative that Makes Steel and Chromium Carbide Wearplate Obsolete!

Lowest Cost Per Ton - ASGCO X-WEAR™ will substantially reduce your operating costs when compared to any other lining material. Use the formula above to compare X-WEAR to your current system. If you are truly interested in lower operating costs, install X-WEAR today!

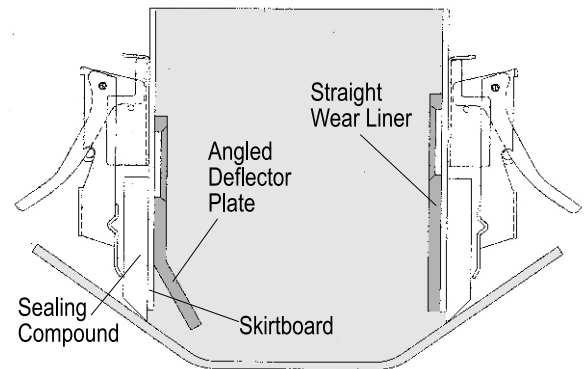
Material Flow - The smooth laminar surface of X-WEAR provides the optimum sliding surface for material handling. Forget UHMW and other plastics that distort, buckle and wear out. The low coefficient of friction and dimensionally stable surface of X-WEAR will provide years of maintenance-free service.

Reduces Downtime - Outlasts all other wear resistant materials.

Corrosion Resistant - X-WEAR is resistant to the corrosive chemicals inherent in most material handling and processing operations.

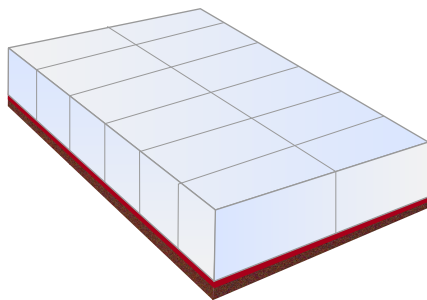
Retrofit - The remarkable structural integrity of X-WEAR makes it ideal for direct retrofitting of worn out chutes and hoppers without expensive repairs.

Noise Reduction - X-WEAR's energy absorbing design dramatically reduces noise.



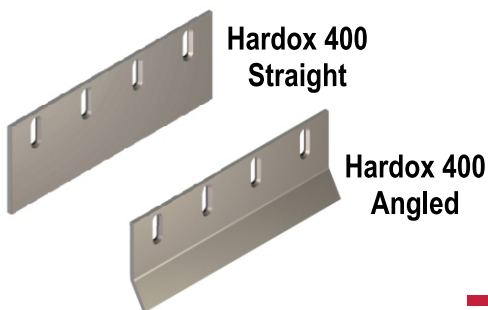
**Angled & Straight Hardox 400
Stainless Steel available**

ASGCO Wear Liners protect your skirtboard and extend the life and effectiveness of your sealing compound. Use the straight design where belts are fully loaded and full chute width needs to be maintained. The angled deflector plate wear liner will force larger material to the center of the belt. Any small fines that work their way under the deflector have a path to exit the skirting area without being forced against the sealing compound.



X-Wear Part Numbers

Part Number	Width	Length	Ceramic Thickness	Liner Thickness	Wt. Lbs.
ASG-XW-12X12X2	12"	12"	2"	2-3/8"	47
ASG-XW-12X12X1	12"	12"	1"	1-3/8"	29
ASG-XW-12X12X3/4	12"	12"	3/4"	1-1/8"	25
ASG-XW-12X12X1/2	12"	12"	1/2"	7/8"	21



AR400 Steel Wearplate Part Numbers

Part Number	Description	Wt. Lbs.
ASG-SKRT-LIN-HAR-24-1/2-A	Deflector Wearplate, Hardox 400, Angled	30
ASG-SKRT-LIN-HAR-24-1/2-S	Deflector Wearplate, Hardox 400, Straight	30

