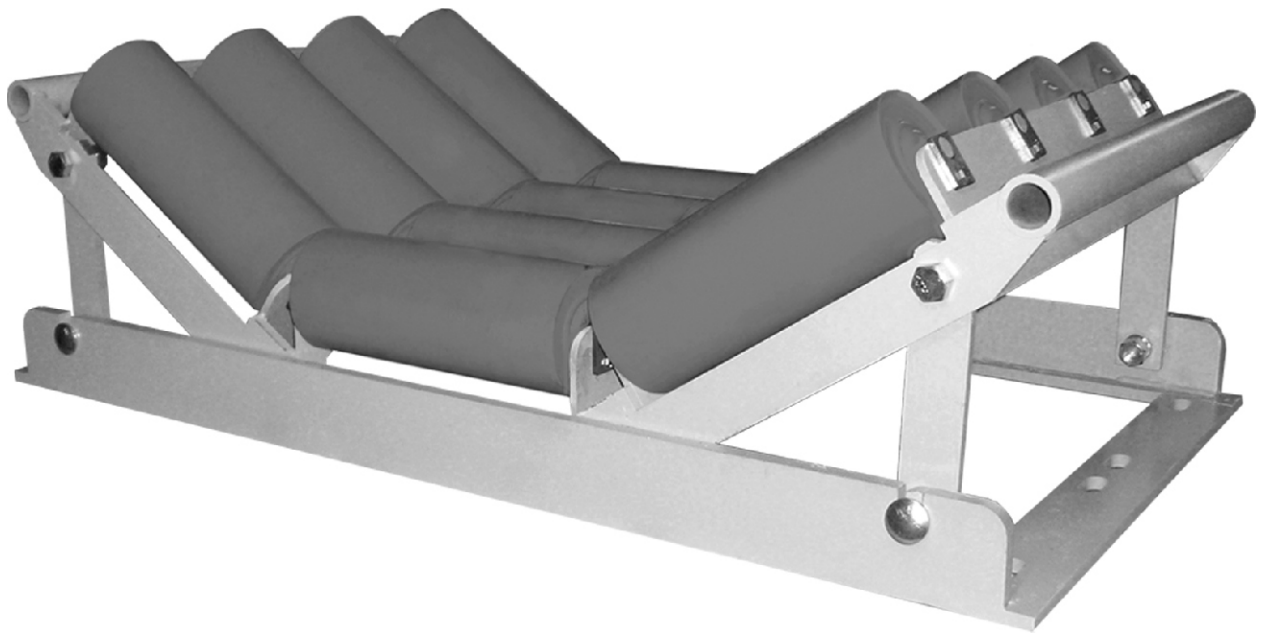




# ROLLER CASSETTE<sup>®</sup>

## INSTALLATION, OPERATION & MAINTENANCE INSTRUCTIONS



Check us out at  
[www.asgco.com](http://www.asgco.com)

Customer Service  
**800-344-4000**



24 Hour Emergency  
Service and Parts  
610-821-0210



ASGCO Mfg., Inc.  
301 Gordon Street  
Allentown, PA 18102  
610-821-0216  
FAX 610-778-8991

---

**Important  
Safety  
Notice**

*Always observe the basic rules of safety when working with any conveyor system. To avoid injury and equipment damage, be sure that all controls to the conveyor are locked out and the power source is disconnected at all times during installation.*

---

**Very Important**

Before burning or welding, remove all flammable materials located around and below your work area so that they cannot be ignited by hot sparks or slag. Post a fire watch if you cannot see all area affected by sparks or slag. Keep a fire extinguisher and a first-aid kit on hand at all times.

---

**Items Needed  
For Installation:**

Carpenter's Square  
Tape Measure  
Torch or Drill With Bits  
Bolts, Nuts, and Washers for bolting support frames  
to structure.  
Wrenches

---

**Roller Cassette Rules  
to always follow:**

Always have the center roll height of the Roller Cassette match the troughing roller before and after the Roller Cassette.

---

**Location Selection:**

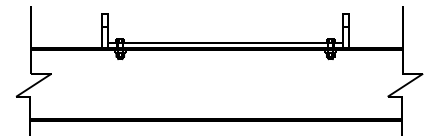
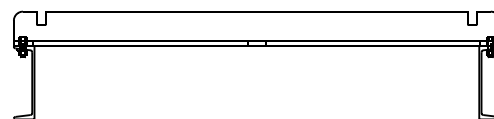
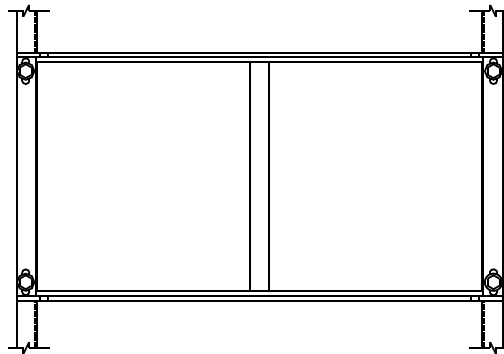
Generally the Roller Cassette (s) is located in the load zone area of the conveyor where minimum deflection of the skirt is necessary to eliminate spillage from the skirt seal. At times Roller Cassettes are purchased to decrease impact damage from high impact areas, in these areas the Roller Cassette should be placed at the point of highest impact.

## Installation:

Remove the existing troughing rollers where the Roller Cassette (s) are to be installed.

9 Roll System		12 Roll System	
Roll Dia Length	Cassette Length	Roll Dia	Cassette
5"	18"	5"	24"
6"	21"	6"	28"
7"	24"	7"	32"

Slide the base frame into the location where the Roller Cassette is to be installed.

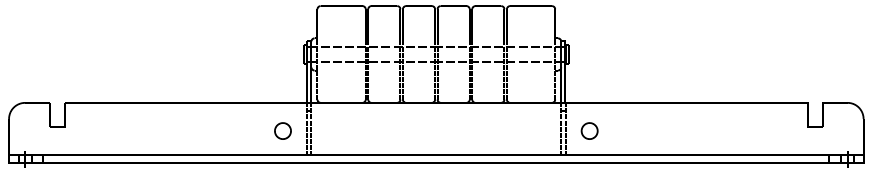


Base frame

Using the slotted holes in the Cassette frame, mark the location of the mounting holes.

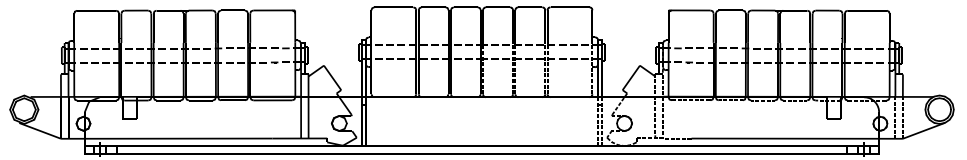
Remove the base frame and drill or burn holes in the conveyor frame for bolting the Roller Cassette.

Slide the base frame back into the location where the Roller Cassette is to be installed and bolt Cassette frame to conveyor frame. Slide assembled center section into center of Roller Cassette Base Frame.



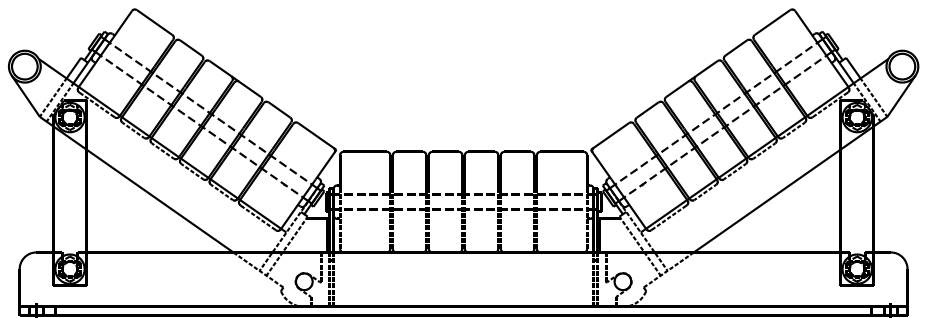
Assembled Center Section

Slide assembled wing sections into each side of the Roller Cassette Frame.



Assembled Wing Section

Raise each wing section and install the vertical support for the side wing sections.



Finished Installation

---

## **MAINTENANCE**

Maintenance of the Roller Cassette is limited to visual inspection for roller not turning.

Faulty rollers should replace immediately, to prevent wear to the bottom cover of the belt.