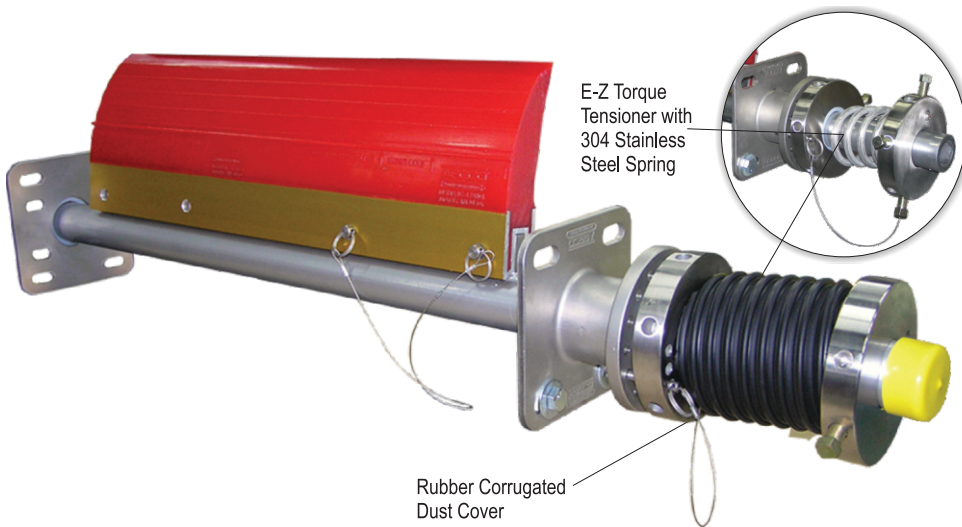


SKALPER™

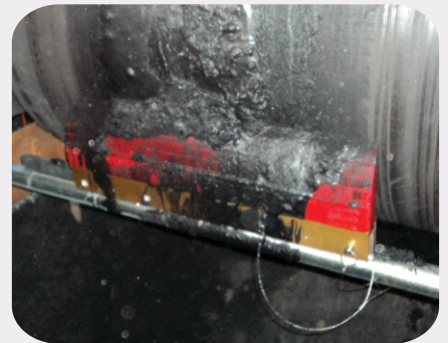
Primary Belt Cleaning System with E-Z Torque Tensioner

ASGCO®
Complete Conveyor Solutions

Our patented **Skalper™** series of conveyor belt pre-cleaners have been installed and have solved carry-back problems all over the world. The simple and highly effective Skalper™ belt cleaner removes carry-back effectively and efficiently.

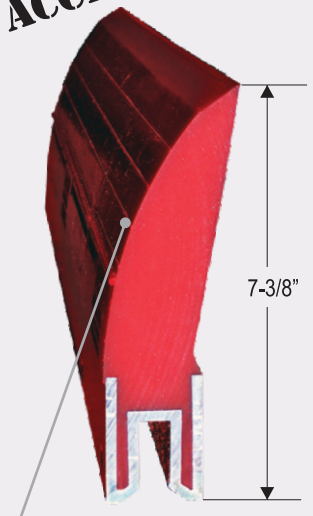


Hard Rock Mining



Coal Mining

- **Excellent Performance** - of our patented Skalper™ Blade design maintains an effective cleaning edge throughout the life of the blade with its unique horizontal sipes/wear-grooves across the entire width of the blade cleaning edge and by the use of the arc-shaped back side of the blade to ensure a sharp cleaning edge.
- **E-Z Torque Tensioner™** - (lifetime warranty) - made of all 304 stainless steel mounting plates, collars and springs allows the blades to self adjust throughout the entire life of the blade and is the most robust and accurate belt cleaner tensioner in the industry.
- **Torque Spring** - provides a greater degree of tensioning per inch of blade, verses compression springs which require more tensioning adjustment for the life of the blade.
- **Rubber Corrugated Dust Covers and UHMW Bushings** - ensures no build-up in the spring tensioning area and provides smooth non-binding tensioning.
- **All Stainless Steel Mounting System and Tensioner** - our standard zinc plated, schedule 160 mounting tube combined with the E-Z Torque Tensioner™ provide our customers with a belt cleaner that can handle the most extreme corrosive and weather conditions.
- **Quick-Change Blade** - stainless steel pin blade change-out system is a one-minute, no-tool operation.
- **Easily Maintained** - and tensioned from one side of the conveyor.
- **MSHA Accepted** - #MSHA IC - 174/1



Unique horizontal sipes (wear-grooves) across the entire width of the blade cleaning edge.

Providing the World Material Handling Industry with Productive, Safe and Reliable "Complete Conveyor Solutions."

301 Gordon Street . Allentown, PA 18102 . 1-800-344-4000 . Fax: 610-778-8991 . www.asgco.com



Unique horizontal sipes/wear grooves across the blade width.

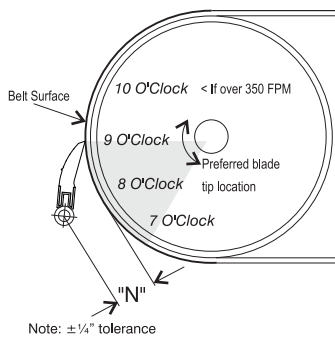
E-Z Torque Tensioner™

- Single hand tensioning
- Superior elasticity

Skalper™ Blade with E-Z Torque

- The Skalper™ blade uses ASGCOthane, a special polymer designed to handle mechanical fasteners.
- Rubber corrugated dust covers ensure no build-up in the spring tensioning area
- Stainless steel pin blade change-out system is a one-minute, no-tool operation.
 - Our patented, extremely abrasion resistant Skalper™ Blade design maintains an effective cleaning edge throughout the life of the blade with its unique horizontal sipes/wear-grooves across the entire width of the blade cleaning edge.

Installation Dimensions



| "N" Dimension Table | |
|------------------------------------|---------------------------|
| Pulley Diameter inches [mm] | "N" Dimension inches [mm] |
| Note the tolerance is ± 1/4" [6mm] | |
| 12" [300mm] | 4-3/4" [120mm] |
| 14" [350mm] | 4 1/2" [115mm] |
| 16" [400mm] | 4-1/4" [110mm] |
| 18" [450mm] | 4" [100mm] |
| 20" [500mm] | 4" [100mm] |
| 24" [600mm] | 3-3/4" [95mm] |
| 30" [750mm] | 3-1/2" [90mm] |
| 36" [900mm] PLUS | 3-1/4" [85mm] |

New blade profile generates more flex for better shedding during last half of blade wearlife



A flat pulley surface side of the blade ensures a sharp point contact and material clearance.

Skalper Part Numbers BW-6"

| Part Number | Belt Width | |
|-----------------------|------------|--------|
| M-SK4-SYS-18-EZT-12-1 | 18" | 450mm |
| M-SK4-SYS-24-EZT-18-1 | 24" | 600mm |
| M-SK4-SYS-30-EZT-24-1 | 30" | 750mm |
| M-SK4-SYS-36-EZT-30-1 | 36" | 900mm |
| M-SK4-SYS-42-EZT-36-1 | 42" | 1050mm |
| M-SK4-SYS-48-EZT-42-1 | 48" | 1200mm |
| M-SK4-SYS-54-EZT-48-1 | 54" | 1350mm |
| M-SK4-SYS-60-EZT-54-1 | 60" | 1500mm |
| M-SK4-SYS-72-EZT-66-1 | 72" | 1800mm |

Skalper System also available with these blades:

SKALPER BLADE MATERIALS

| Part Number | ASG-SK4-(XX)-A | ASG-SBB-(XX)-A | M-SK2-(XX)-A | ASG-SKHT-(XX)-A | ASG-SKUHT-(XX)-A |
|-----------------------|----------------|----------------|--------------|-----------------|------------------|
| Blade Type | Skalper IV | Skalper III | Skalper II | Skalper HT | Skalper UHT |
| Durometer | 85 | 85 | 95 | 85 | 95 |
| Belt Speed | < 1200 fpm | < 1200 fpm | < 1200 fpm | < 1200 fpm | < 1200 fpm |
| Temperature Range | -20 - 180°F | -20 - 180°F | -20 - 180°F | -20 - 225°F | -20 - 300°F |
| Use w/Mech. Fasteners | YES | YES | NO | YES | NO |

(XX) Indicates Blade Width

Replacement Blades

| Part Number | Blade Width | |
|--------------|-------------|--------|
| ASG-SK*18A-1 | 18" | 450mm |
| ASG-SK*24A-1 | 24" | 600mm |
| ASG-SK*30A-1 | 30" | 750mm |
| ASG-SK*36A-1 | 36" | 900mm |
| ASG-SK*42A-1 | 42" | 1050mm |
| ASG-SK*48A-1 | 48" | 1200mm |
| ASG-SK*54A-1 | 54" | 1350mm |
| ASG-SK*60A-1 | 60" | 1500mm |
| ASG-SK*66A-1 | 66" | 1650mm |
| ASG-SK*72A-1 | 72" | 1800mm |

* Indicates Blade Type

IV=4 III=SBB II=2 HT=HT UHT=UHT



Providing the World Material Handling Industry with Productive, Safe and Reliable "Complete Conveyor Solutions."

301 Gordon Street . Allentown, PA 18102 . 1-800-344-4000 . Fax: 610-778-8991 . www.asgco.com