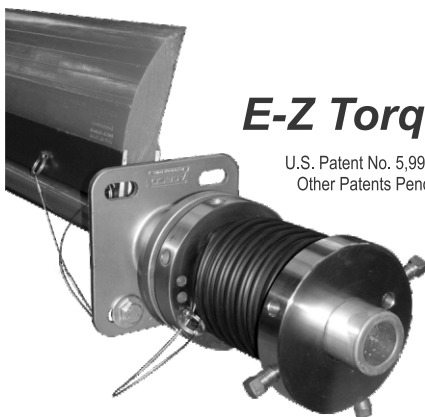
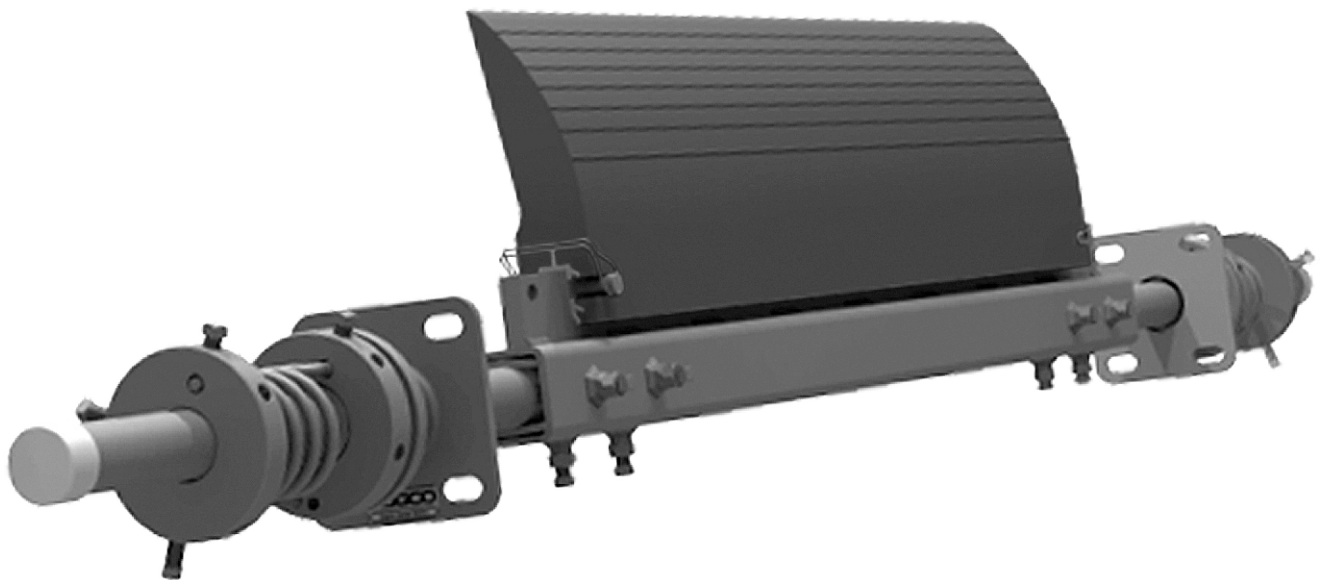




SUPER SKALPER[®]

with E-Z Torque[®]

INSTALLATION, OPERATION & MAINTENANCE INSTRUCTIONS



E-Z Torque[®]

U.S. Patent No. 5,992,614
Other Patents Pending

Check us out at
www.asgco.com

Customer Service
800-344-4000



24 Hour Emergency
Service and Parts
610-821-0210



ASGCO Mfg., Inc.
301 Gordon Street
Allentown, PA 18102
610-821-0216
FAX 610-778-8991

Important Safety Notice

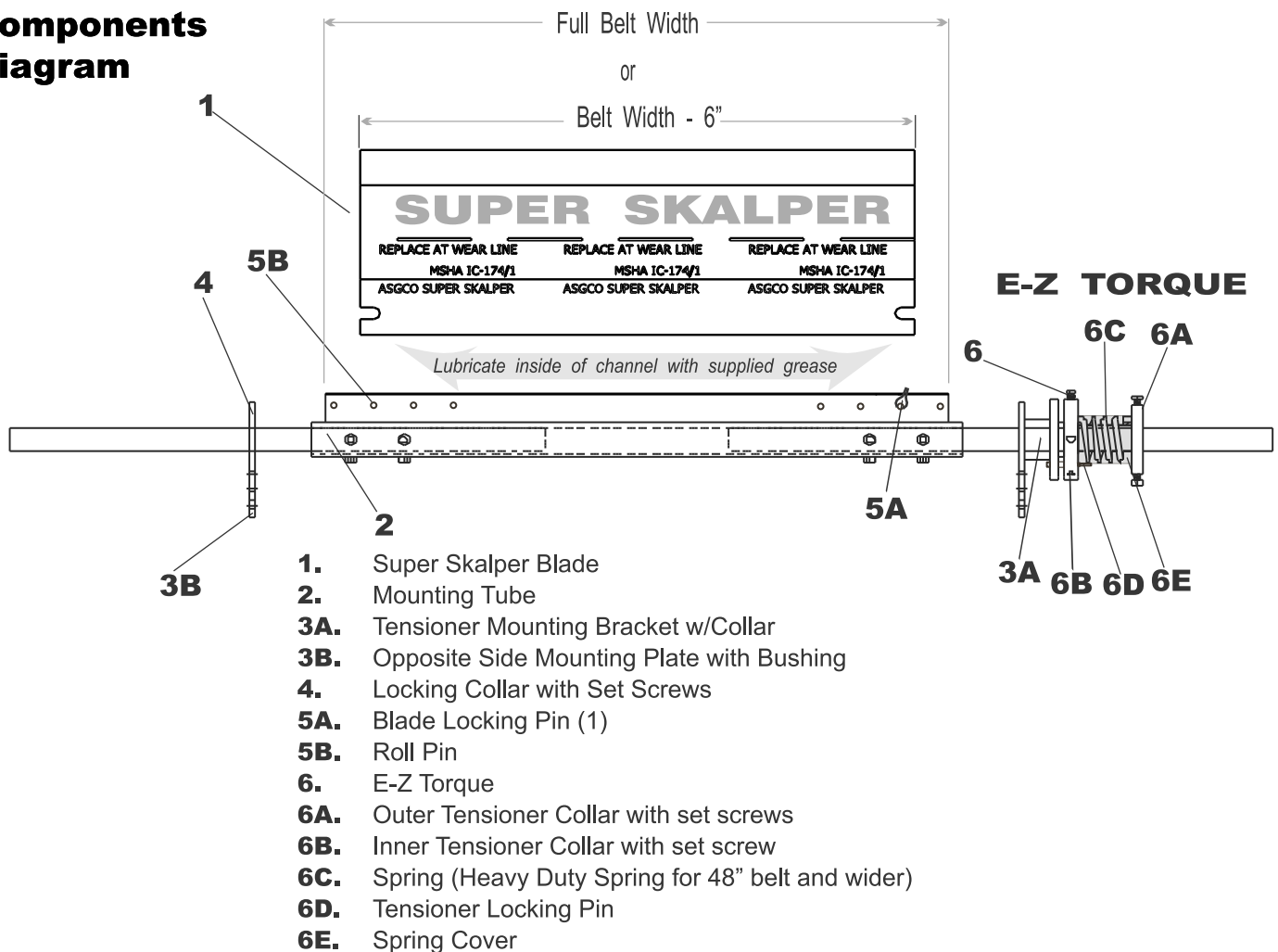
Always observe the basic rules of safety when working with any conveyor system. To avoid injury and equipment damage, be sure that all controls to the conveyor are locked out and the power source is disconnected at all times during installation.



Overall View

If mounting structure is not available, additional steel may have to be added. *Note: Excess mounting tube may be trimmed after installation. Also note required lubrication of components.*

Components Diagram



1. Determine the Critical "N" Dimension

Determining the "N" dimension, the distance from the belt surface to the mounting tube center, is critical to get the maximum cleaning performance from your system. Make sure mounting tube and tensioner system are clear of obstacles.

"N" Dimension Table	
Pulley Diameter	"N" Dimension
Note the tolerance is $\pm 1/4"$ [6mm]	
18" [457 mm]	7" [178 mm]
20" [508 mm]	6-3/4" [171 mm]
24" [610 mm]	6-1/4" [159 mm]
30" [762 mm]	5-3/4" [146 mm]
36" [914 mm]	5-1/4" [133 mm]
42" [1067 mm]	4-3/4" [118 mm]
48"+ [1219 mm+]	4-1/2" [114 mm]

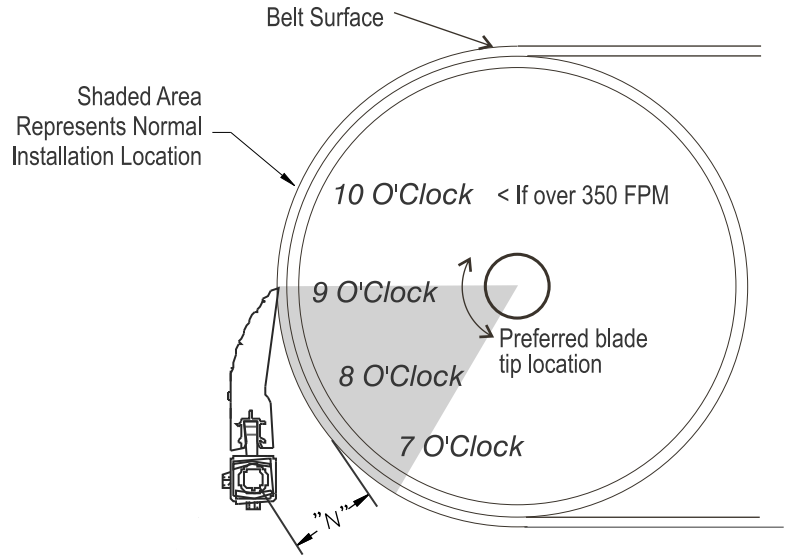
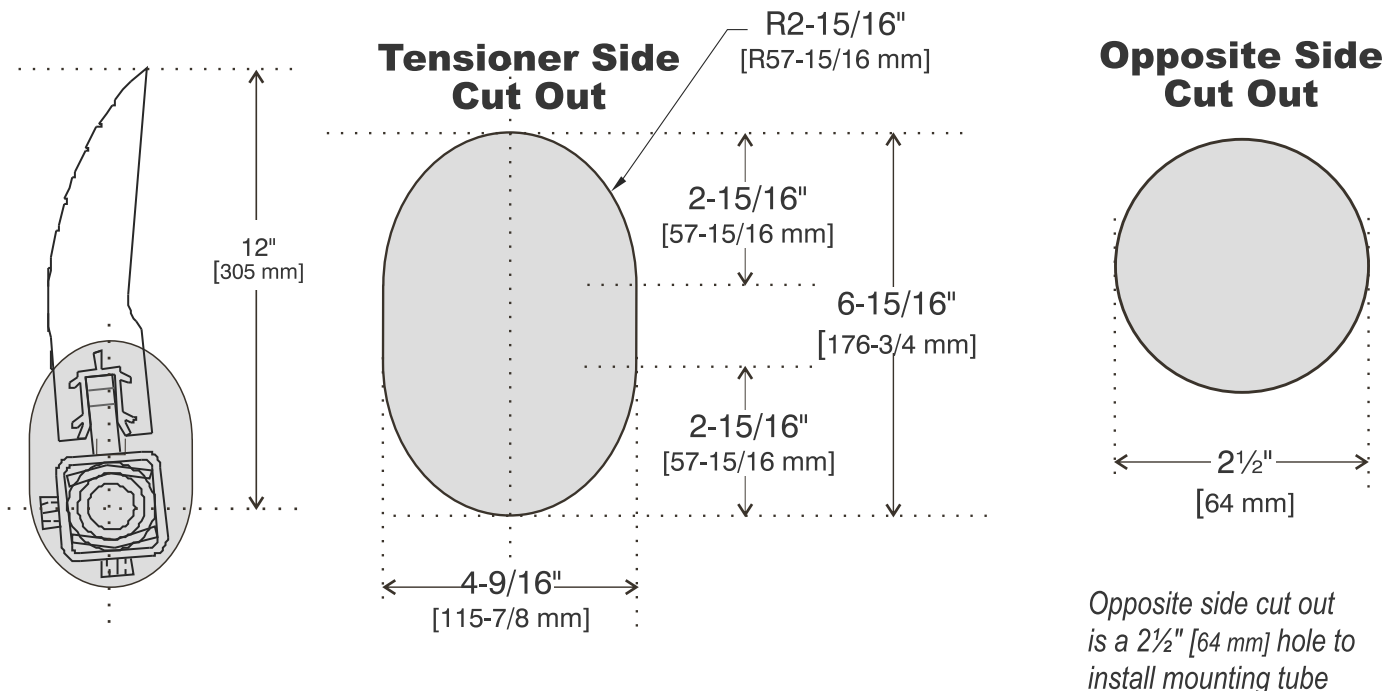


Figure 1: Typical Mounting Position
*Note: $\pm 1/4"$ [6mm] tolerance

2. Cut Chute Openings

Determining the desired location of the mounting brackets. The required slot sizes/locations are shown for the tensioner side chute cut outs.



3. Assemble Mounting Tube

Insert mounting tube extensions into end of mounting tube and fasten tube (using square head bolts and jam nuts) onto extensions at the correct distances. (9" insert for 18" belt width, 12" insert for 24" and 30" belt widths, and 18" insert for 36" through 96" belt widths). See Figure 2.

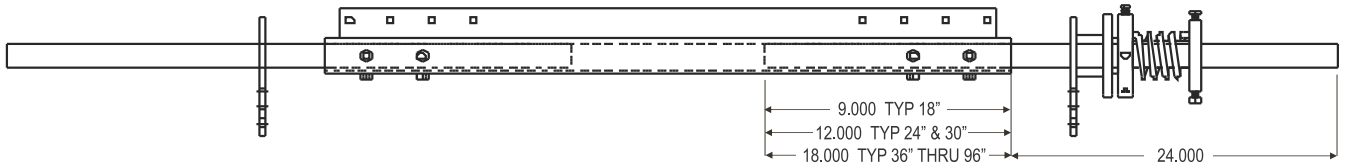


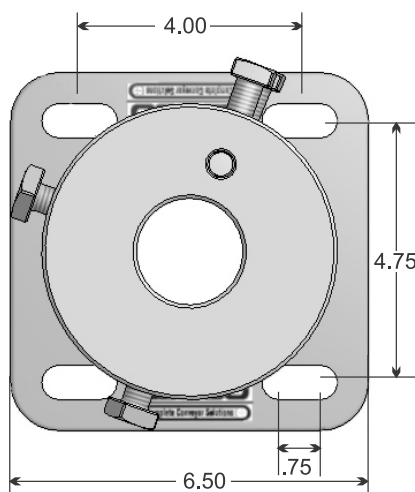
Figure 2.

4. Put Mounting Tube through Cut Outs

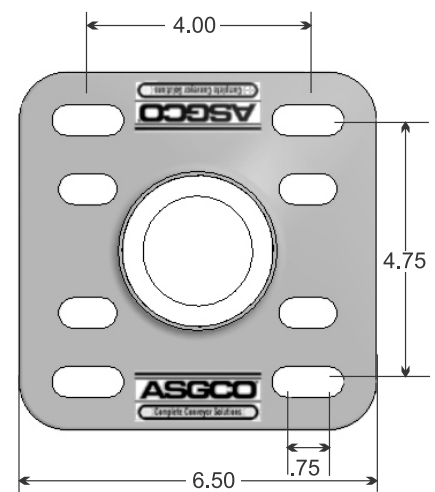
Place the mounting tube through the chute cut outs so that the long tube section is on the tensioner side. Place the blade onto the blade holder. Visually check the blade position and contact with the belt/pulley.

5. Mount Brackets

Determine the desired location of the mounting brackets. Attach the mounting brackets to the conveyor frame by welding or bolting. Adjust mounting tube extensions as needed to ensure enough length is through the tensioner and opposite side mounting brackets. NOTE: Mounting brackets are 304-SS, use appropriate welding rod.



Tensioner Side

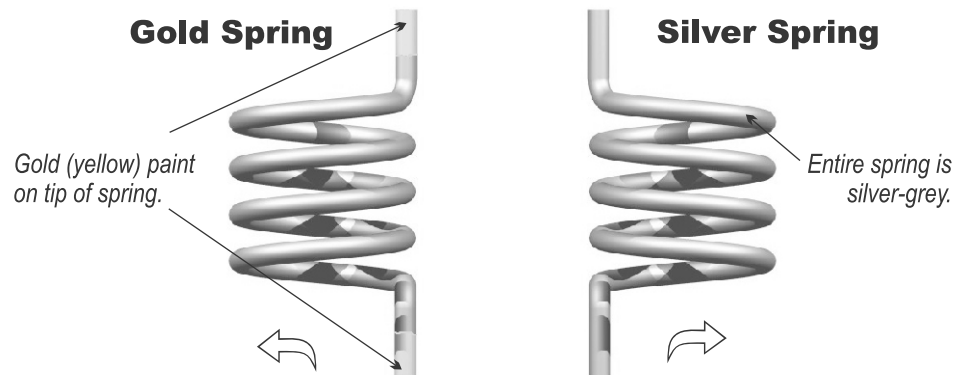


Opposite Side

6. Select Correct Spring

Each Super Skalper System is shipped with two springs of opposite handedness. To determine the proper spring to use:

Face the head pulley as the material would come to you. If the E-Z torque tensioner is on the *right* side, then use the Silver Spring (entire spring is silver-grey). If the tensioner is to your *left*, then use the Gold Spring (yellow tipped spring).



7. Assemble E-Z Torque Tensioner:

Assemble the components of the E-Z Torque tensioner. Tighten all set screws to 70 ft./lbs.

8. Installing Roll Pin and Blade

Each system is shipped with a $\frac{1}{2}$ " diameter roll pin which will engage a slot in the blade on the opposite end of the blade from the change-out side of the conveyor. The roll pin should be installed in the first $\frac{1}{2}$ " hole for a full belt width blade, in the second $\frac{1}{2}$ " hole a BW - 6" blade, etc.

The opposite side of the blade will line up with a $\frac{9}{16}$ " diameter hole through which a $\frac{1}{2}$ " clevis pin with a bail is inserted to lock the blade in place.

OPERATION & MAINTENANCE

Tension

- 1.) Set tension to about 1-½ ft/ lb torque per inch of blade width. (See chart below) 1 degree rotation equals approx. 2ft./lb.

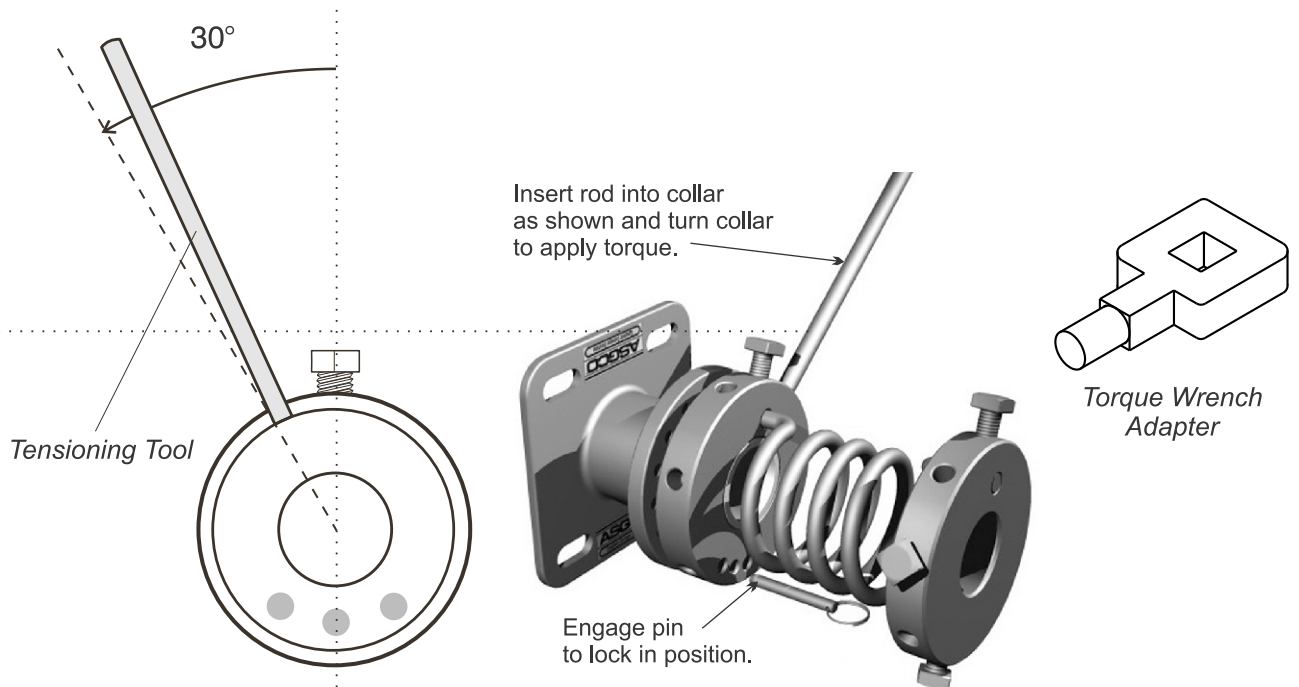
Blade Width	Torque Ft-Lb	Spring Rotation Degrees
24	36	18
30	45	22
36	54	27
42	63	31
48	72	36

Belt width 48" and above, dual tensioners are supplied each tensioner.

Blade Width	Torque Ft-Lb	Spring Rotation Degrees
36	27	13
42	31	15
48	36	18
54	40	20
60	45	22
72	54	37
84	63	31
96	72	36

Use direct torque/reading if using a torque wrench.

Decrease or increase as necessary. The minimum amount of blade force required to clean the belt will extend blade life. The tensioning rod may be used to get approximate blade tension. Use the torque wrench adapter to accurately tension the blade.



- 2.)** Frequent inspections the key to proper belt cleaning and easy scraper servicing. Weekly inspections are recommended, but actual service frequency may vary widely depending on various plant operating conditions.
- 3.)** Inspect the belt surfaces and edges for cracks, splits, tears, holes or any other worn or damaged condition occurring on the surfaces or edges of the belt itself. If necessary make repairs to the belt. Wash the entire cleaner regularly to prevent excessive build-up. Check the tightness of all fasteners.
- 4.)** Inspect for proper operation. Adjust tension as required.
- 5.)** Replace the Skalper scraper blade as required. Use only ASGCO Manufacturing approved replacement scraper blades.

Information

Key	Description	Part Number
1	Super Skalper Blade Replacement	ASG-SSK4-[BW]-A [X]=Blade Type, [BW]=Blade Width
2	Mounting Tube	ASG-SSKMT-[BW]-A
3a	Mounting Bracket Tension Side	ASG-EZT-TS-ASM (Includes Inside Collar)
3b	Mounting Bracket Opposite Side	ASG-SKMT-MB
4	Locking Collar with Set Screws	ASG-SKMT-LC
5a	Locking Pin (1)	ASG-SSKMT-CL
5b	Roll Pin 1/2"[13 mm]	ASG-RZMT-RP
6	E-Z Torque	M-ASG-EZTORQUE
	Bushing (Greaseless)	ASG-EZT-BUSHING
A	Outside Collar	ASG-EZT-OCHS-AL
B	Inside Collar	ASG-EZT-ILC-AL
C	Spring	ASG-ROT-[LS or RS]-{1242 or 4896}
D	Locking Pin (Tensioner)	M-ASG-ROT-LPC
	Rotary Tensioning Tool	ASG-ROT-TT
E	Spring Cover	ASG-EZT-SPRING-COVER

Call your ASGCO Distributor for any questions or replacement parts

TROUBLE SHOOTING

PROBLEM	SOLUTION
<i>Excess vibration of the scraper.</i>	<p>Make certain all bolts are tight and the pin is securely engaged on the tensioner.</p> <p>Ensure the cleaners N-dimension is proper (See Table and Figure 1).</p>
<i>Excess carryback.</i>	<p>Check for excess build-up on the scraper.</p> <p>Check for proper Scraper tension. Put additional tension on cleaner.</p> <p>Check for non-uniform scraper wear.</p> <p>Check N-dimension.</p> <p>Clean the back-side of the belt cleaner.</p>
<i>Check for wear on the cleaning tips.</i>	<p>Check thickness of carryback. If the cleaner must remove more than about 1/8" [3 mm] of material then an additional cleaner may be needed.</p>
<i>Frozen material on scraper.</i>	<p>Place heaters near scraper to melt frozen material. (Use caution not to burn belt or cleaner)</p>
<i>Blade wearing in center</i>	<p>Install a new blade that concentrates cleaning in the center of the flow of the material. (Belt Width - 6" or Belt Width - 12")</p>