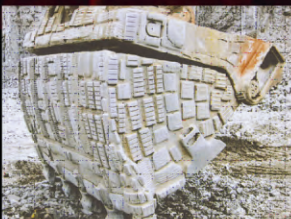


*Providing the World Bulk Material Handling Industry  
with Productive, Safe and Reliable "Complete Conveyor Solutions."*

**wear solutions**



# Armorite™

## Armorite™ Applications

- Chute Linings
- Rock-Box Edges
- Grizzly Caps/Screens
- Transfer Points
- Impact Plates
- Distributor Plates
- Arm/Hub Liners
- Bin Liners
- Hopper Wear Plates
- Divider/Splitter Bars
- General Wear Protection
- Liner Panels



- Wear Plates
- Wear Bars
- Shaped Wear Bars
- Skid Bars
- Grizzly Bars
- Chocky Bars
- Wear Buttons
- Wear Donuts
- Shredder Tips
- Knife Edges

## Guaranteed to Last 5-6 Times Longer Than Ar500!

**Armorite™** is an extremely hard, laminated bi-metallic, wear resistant composite, which has a nominal hardness of 700 BHN (63Rc) produced by combining a highly alloyed chromium-molybdenum white iron (to AS 2027 15/3 Cr/Mo) and metallurgically bonding it to a mild thick steel backing plate. The resultant bond possesses high shear strength of over 250 Mpa and will not separate.

- **Armorite™** is a combination of high chromium and molybdenum white iron metallurgically bonded to a mild steel plate
- **Armorite™** provides maximum protection in high wear areas it to withstand impact
- **Armorite™** is easily weldable with minimal preparation
- **Guaranteed to last 5-6 times longer than AR500**

## Armorite™ Typical Bond Zone

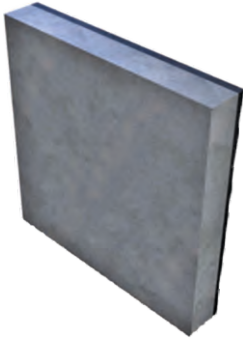
### Product Features:

- White iron: Modified AS2027 15/3 Cr Mo
- Vacuumed brazed and liquid nitrogen cooled to achieve a high strength joint
- Mild steel backing offers strength, machinability, and impact resistance
- Can be welded in place, through-bolted, stud bolted, drilled, tapped, keyed
- Ease of fitment, very versatile



# ASGCO Armorite™ Wear Liner Products

## Armorite™ Smooth Liners

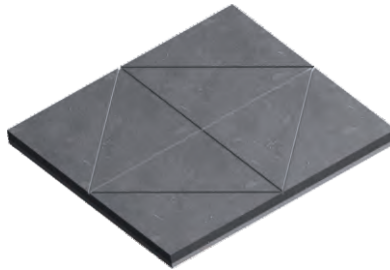


**Armorite™ Smooth Liners** present a very cost effective method of extending wear life in chutes, hoppers, bins, impact walls and screen plates.

- Extreme abrasion resistance across a range of applications
- Custom designs to meet customer requirements
- Optional Nelson studs supplied ex works
- Liner size allows for localized replacement in high wear areas.
- Reduced downtime & reduced maintenance costs
- Longer service when compare to conventional materials



## Armorite™ Star Plate



**Armorite™ Star/Notched Wear Liner** is a multi-shaped wear resistant plate that offers a wear plate that can be easily cut to fit in most applications of transfer chutes, bins, hopper, bucket and truck bed linings. The cast notches on the wear face corresponding to the slotted backing plate to allow for controlled breaking to be able to custom shape and design the wear plate.

- A standard plate can create many different shapes, sizes and designs
- Easy to use, install and extends wear life compared to AR plates and chrome carbide overlays
- Ability to replace worn individual sections rather than whole plates of sheets
- Ideal for chutes, bins, buckets, hoppers and truck bed linings



## Armorite™ Skirtboard Liners



**Armorite™ Skirt Liners** protect your skirtboard and provide a significantly longer wear life than currently used skirt liners. The skirt liner is produced from 5/8" thick Armorite™ that is enhanced with a 3/8" thick mild steel producing a product that is 700 BHN with a high impact resistance. It can be used for all conveyors and transfers where the eradication of spillage or centralization of load is required.

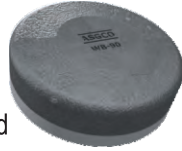
- Reduces downtime an maintenance costs
- Designed to be rotated 180° for long wear life
- Custom sizes available



# ASGCO Armorite™ Wear Liner Products

## Armorite™ Wear Buttons

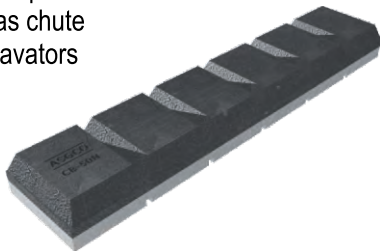
**Armorite™ Wear Buttons** are a circular domed shape wear part that provides maximum protection while minimizing the effects of impact. The round shape virtually eliminates any chance of a weld cracking.



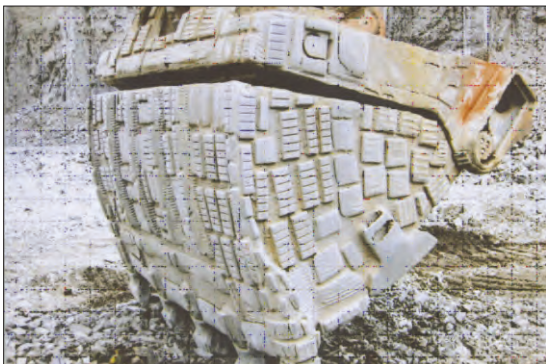
- Ideal for small impact and wear areas
- Easy to use and install with no pre or post heating
- Great alternative to labor intensive hard facing

## Armorite™ Chocky Bars

**Armorite™ Chocky Bars** offer protection on contoured surfaces such as chute linings, buckets, loaders, excavators and dragline machines.



- Easy formation to convex or concave surfaces with the notched mild steel backing plate
- No pre-heating or post-heating required when welding bars in place
- Cost effective method for protecting your equipment



## Armorite™ Wear Bars

**Armorite™ Wear Bars and Grizzly Bar Caps** are available in a range of thickness and lengths. Used in grizzly screens, chutes, hoppers, bins, rock box edges and other high wear applications.



- Superior wear life when compared to conventional alloys used such as manganese steel, clad overlay and other alloys
- Cost effective method for protecting your equipment
- Variety of sizes and shapes available



## Armorite™ Knife Edge & Shredder Tips



**Armorite™ Knife Edges and Hammer/Shredder Tips** is a 700BHN weld on or bolt on; specifically designed for the Sugar and Re-cycling industries.

- Cane knife edges and tips are easy to install and maintain
- Increased production and shredding efficiency
- Maintain sharp edges from the start of use and retain their edge sharpness and cutting efficiency longer than hard facing

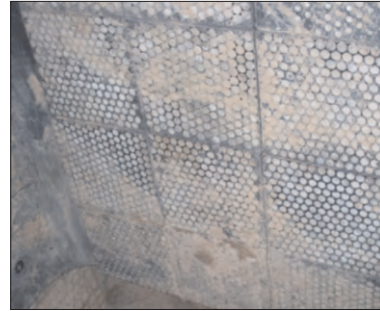
# ASGCO Ceramic, Rubber and Steel Liners

## X-Wear™ Mine Duty

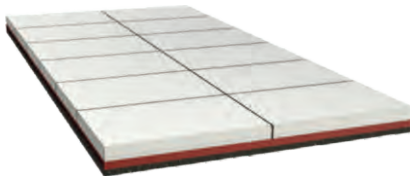
**ASGCO Mine Duty X-Wear™** is made of extremely hard ceramics that provide unsurpassed resistance to abrasive wear while the rubber effectively dampens the impact forces that can crack the ceramic rods. The resilient rubber matrix that surrounds the ceramic rods is hot vulcanized for superior adhesion.

**Wide Range of Use - X-Wear™ Mine Duty** is mainly used in the mining and quarrying industries, where severe abrasion and impact occurs.

- Excellent Wear Protection for tough mining conditions where there is a need for both wear protection and low noise materials
- 1/4" Steel Backing is suitable for stud welding, plug welding or self-tapping screws
- Custom sizes available



## X-Wear™ Ceramic



**X-Wear™ Ceramic** ASGCO X-Wear™ will substantially reduce your operating costs when compared to any other lining material. The ceramic is bonded to a 1/4" steel plate using impact resistant urethane epoxy.

- Light Weight - **X-Wear™** is lightweight and easy to install by maintenance personnel
- Material Flow - The smooth laminar surface of **X-Wear™** provides the optimum sliding surface for material handling
- Custom - The remarkable structural integrity of **X-Wear™** makes it ideal for direct retrofitting of worn out chutes and hoppers without expensive repairs



## X-Wear™ AR



Angled Hardox 400



Straight Hardox 400

**X-Wear™ AR** ASGCO Wear Liners protect your skirtboard and extend the life and effectiveness of your sealing compound. Use the straight design where belts are fully loaded and full chute width needs to be maintained. The angled deflector plate wear liner will force larger material to the center of the belt. It can be used for all conveyors and transfers where the eradication of spillage or centralization of load is required.

- **Stainless Steel available**
- **Custom Sizes Available**



Check us out at  
[www.asgco.com](http://www.asgco.com)



Customer Service  
800-344-4000 or  
610-821-0216

© 2011 ASGCO Manufacturing Co., Inc.



301 Gordon Street  
Allentown, PA 18102  
610-821-0216  
FAX 610-778-8991