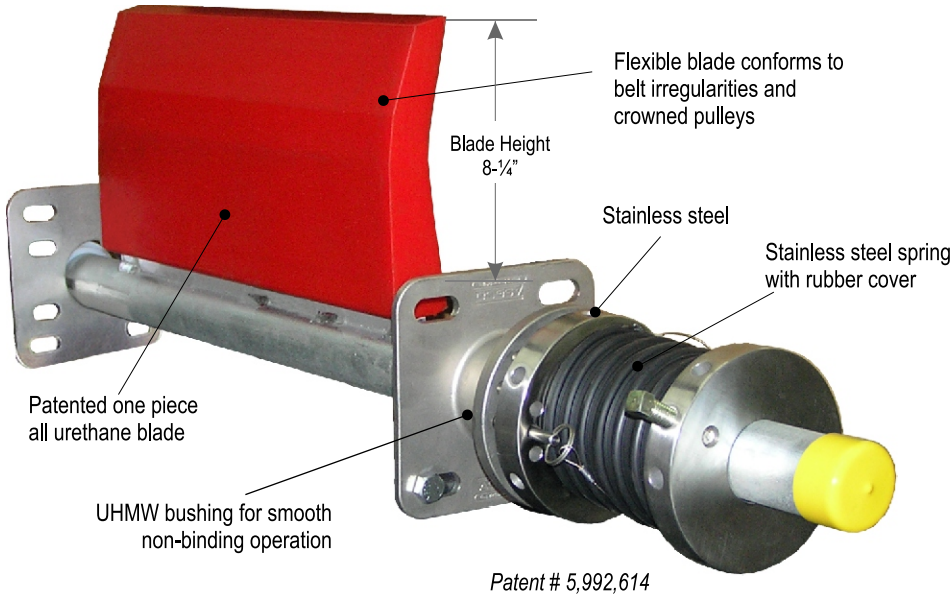


# E-Z SKALPER

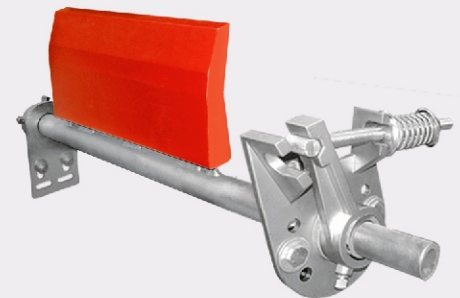
with E-Z Torque Tensioner  
**Best Value in an All Urethane Cleaner**



The **E-Z Skalper** conveyor belt pre-cleaner provides effective carry-back removal in the toughest environments. The patented blade is designed for removing high volumes of material and for quick and easy maintenance.



**E-Z Skalper System also available with Force-1 Tensioner**



### Force-1 Tensioner

- Simple and accurate
- Single hand tensioning
- Superior elasticity
- Versatile mounting positions
- Handles rugged environments
- Fits narrower spaces

- **Excellent Performance** - of our patented E-Z Skalper Blade design is available in a 1-piece blade or segmented blades that can be changed for the optimum in blade coverage across the belt's material carry path for better cleaning efficiency.
- **Advanced Composites** - using ASGCO's experience with urethane composites, provides belt cleaner blades that can handle the toughest environments; Aggregate, Cement, Coal, Gypsum, Potash, Pulp and Paper and Coal industries.
- **E-Z Torque Tensioner** - (lifetime warranty) made of stainless steel allows the blades to self adjust and is the most robust and accurate belt cleaner tensioner in the industry.

**E-Z Skalper System also available with these blades:**

#### E-Z Skalper IV



85 Duro

#### E-Z Skalper II



95 Duro

#### E-Z Skalper High Temp

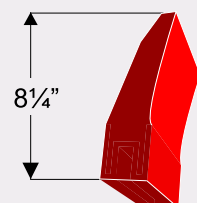


85 Duro  
220° F

#### E-Z Skalper Ultra High Temp

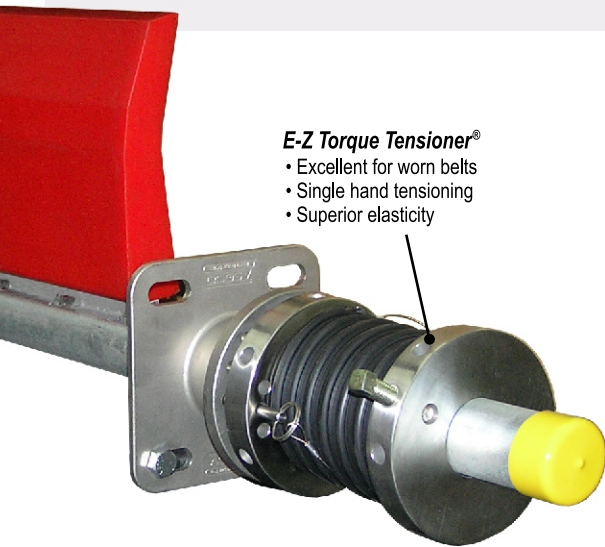


95 Duro  
300° F



# E-Z SKALPER

## TECHNICAL INFORMATION



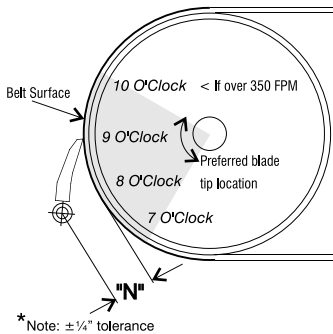
**E-Z Torque Tensioner®**

- Excellent for worn belts
- Single hand tensioning
- Superior elasticity

## E-Z Skalper® Blade with E-Z Torque

- The E-Z Skalper® blade uses ASGCOthane, a special polymer designed to handle mechanical fasteners such as Flexco or Clipper.
- Single piece blade - not segmented - no trapping of materials which may endanger belt life. . . yet very flexible.
- The E-Z Skalper blade is extremely abrasion resistant and very flexible with high memory.
- E-Z Skalper Systems can be mounted in a variety of locations to give you maximum cleaning. Examples include the head, snub and bend pulleys
  - Proven particularly successful in applications as varied as coal, phosphate, fertilizer, aggregate, iron ore, taconite, silica sand, scrubber sludge, fly ash and many others.

### Installation Dimensions



"N" Dimension Table	
Pulley Diameter	"N" Dimension
Note the tolerance is $\pm 1/4$ "	
12"	6-5/8"
14"	5-7/8"
16"	5-1/2"
18"	5-1/4"
20"	5"
24"	4-1/2"
30 & above	4"

\* Note:  $\pm 1/4$ " tolerance

U.S. Patent No. 6,354,428

New blade profile generates more flex for better shedding during last half of blade wearlife



More clearance area means virtually no material build up.

### E-Z Skalper Features:

- Mounting tube will accept full belt width blades, BW-6, BW-12, BW-18, etc.
- Blade is 100% ASGCOthane™ - no steel, no aluminum
- Easy blade change, even in cold weather
- Standard one piece blade, 82 - 85 durometer - other compounds available
- Unique patented blade design
- No corrosion - no rust
- Torque wrench adaptor supplied to get accurate torque tension

### EZ-Skalper System w/E-Z Torque Part Numbers

Part Number	Belt Width	Blade Width
M-EZSK-SYS-18-EZT	18	18
M-EZSK-SYS-24-EZT	24	24
M-EZSK-SYS-30-EZT	30	30
M-EZSK-SYS-36-EZT	36	36
M-EZSK-SYS-42-EZT	42	42
M-EZSK-SYS-48-EZT	48	48
M-EZSK-SYS-54-EZT	54	54
M-EZSK-SYS-60-EZT	60	60
M-EZSK-SYS-72-EZT	72	72
M-EZSK-SYS-84-EZT	84	84

### Replacement Blades

Part Number	Blade Width
ASG-EZSK-18A	18
ASG-EZSK-24A	24
ASG-EZSK-30A	30
ASG-EZSK-36A	36
ASG-EZSK-42A	42
ASG-EZSK-48A	48
ASG-EZSK-54A	54
ASG-EZSK-60A	60
ASG-EZSK-66A	66
ASG-EZSK-72A	72
ASG-EZSK-84A	84

