

ARMORITE™

WEAR BARS

ASGCO®

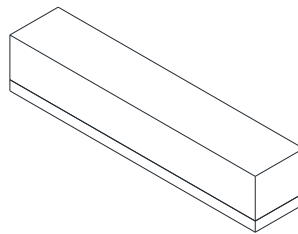
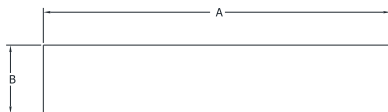
Complete Conveyor Solutions

ASGCO Armorite™ is an extremely hard, laminated bi-metallic, wear resistant composite, which has a nominal hardness of 700 BHN (63Rc) produced by combining a highly alloyed chromium-molybdenum white iron (to AS 2027 15/3 Cr/Mo) and metallurgically bonding it to a mild thick steel backing plate. The resultant bond possesses high shear strength of over 250 Mpa and will not separate.

Armorite™ Wear Bars and Grizzly Bar Caps

are available in a range of thickness and lengths. Used in grizzly screens, chutes, hoppers, bins, rock box edges and other high wear applications.

- Superior wear life when compared to conventional alloys used such as manganese steel, clad overlay and other alloys
- Cost effective method for protecting your equipment
- Variety of sizes and shapes available



Part Number	Description	Length	Width	Thick.	Wt.Lbs.
ASG-AMR-50X2X9	Wear Bar	9"	2"	2"	-

Thickness White Iron 3/4" - Thickness Base Plate 3/8"



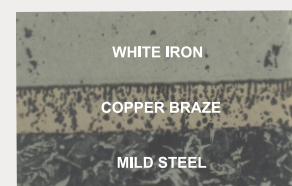
Armorite™ Applications

- Chute Linings
- Rock-Box Edges
- Grizzly Caps/Screens
- Transfer Points
- Impact Plates
- Distributor Plates
- Arm/Hub Liners
- Bin Liners
- Hopper Wear Plates
- Divider/Splitter Bars
- General Wear Protection
- Liner Panels

Product Features:

- White Iron: Modified AS2027 15/3 Cr Mo
- Vacuumed brazed and liquid nitrogen cooled to achieve a high strength joint
- Mild steel backing offers strength, machinability, and impact resistance
- Can be welded in place, through-bolted, stud bolted, drilled, tapped, keyed
- Ease of fitment, very versatile

Bond Zone Layers



Providing the World Material Handling Industry with Productive, Safe and Reliable "Complete Conveyor Solutions."

301 Gordon Street . Allentown, PA 18102 . 1-800-344-4000 . Fax: 610-778-8991 . www.asgco.com