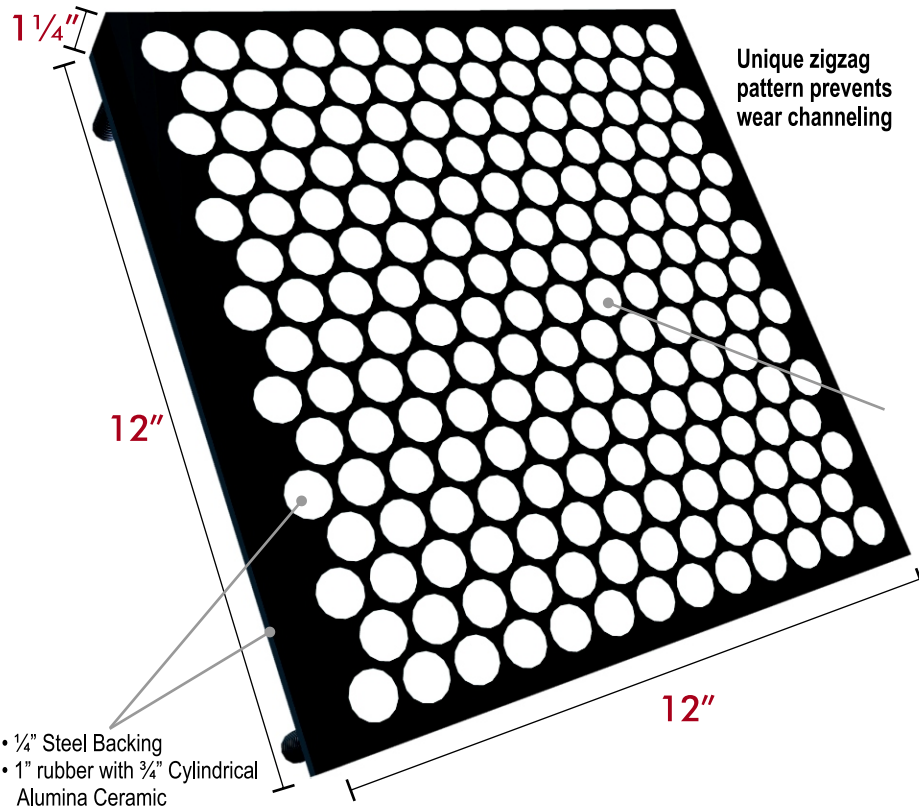


ASGCO MINE DUTY X-WEAR™

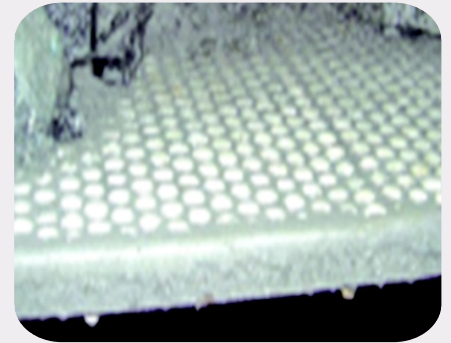
Advanced Ceramic Wearplate

ASGCO MINE DUTY X-WEAR™ is made of extremely hard ceramics that provide unsurpassed resistance to abrasive wear while the rubber effectively dampens the impact forces that can crack the ceramic rods. The resilient rubber matrix that surrounds the ceramic rods is hot vulcanized for superior adhesion.



- **Advanced Hard Ceramic Wearplate**
- **Easy To Install**
- **Reduces Noise**
- **Unsurpassed Resistance**
- **Impact Resistant**
- **Smooth Surface**
- **Longest Wear Life Available**

ASGCO[®]
Complete Conveyor Solutions



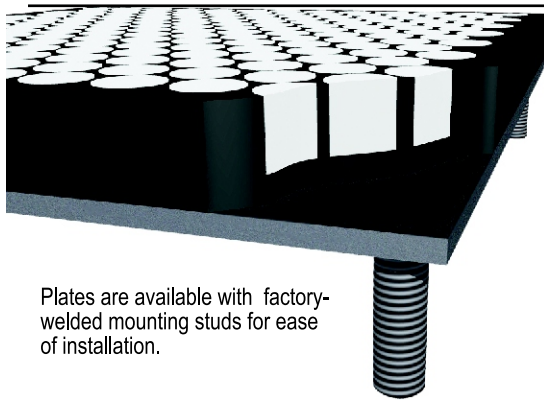
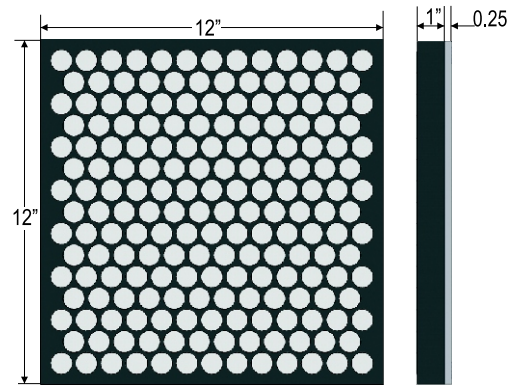
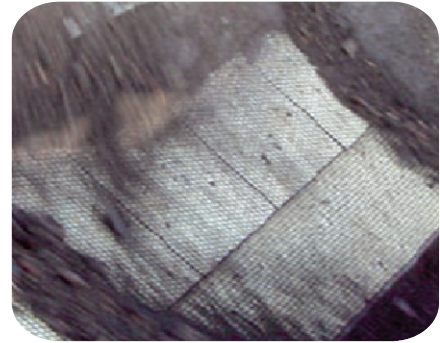
- **Typical Examples:**
 - Transfer points in conveyor systems
 - Screen chutes
 - Deflectors Feeders

ASGCO MINE DUTY X-WEAR™

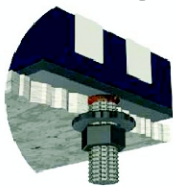
TECHNICAL INFORMATION

Wide Range of Use

- **X-Wear Mine Duty** is mainly used in the mining and quarrying industries, where severe abrasion occurs and the angles of impact are low.
- **Excellent Wear Protection** for tough mining conditions where there is a need for both wear protection and low noise materials.
- **1/4" Steel Backing** is suitable for stud welding, plug welding or self-tapping screws.
- **Plates are available** with factory-welded mounting studs for ease of installation.
 - *Please send drawing of bolt configuration*
- **Unique Zigzag Pattern** prevents wear channeling.
- **Typical Examples:**
 - Transfer points in conveyor systems
 - Screen chutes
 - Deflectors Feeders



Fastening Methods

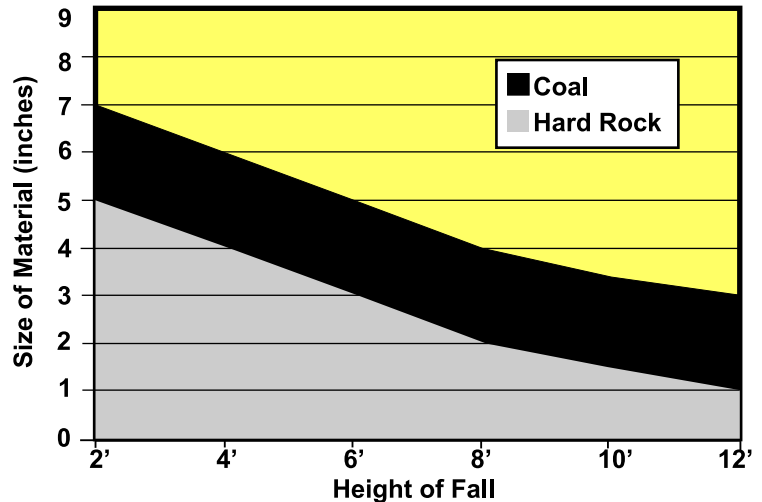


Stud Welded Bolt



Self Tapping Screw

IMPACT RATING



Note: This is an average for materials impacting panels at an angle of between 0-60 degrees. If materials are hitting panels at angles of between 60-90 degrees then the impact rating is half of shown chart.

PART NUMBER	DESCRIPTION
ASG-12x12X1.25-MDX	Mine Duty Wear Liner, 12"x12" Steel Backed Ceramic

