

## TYPICAL APPLICATIONS

### Rendering

- Poultry Processing — Feathers
- Meat Processing — Whole Carcasses
- Fish Processing — Animal Waste
- Fish/Animal Bones

### Pulp & Paper, Gypsum Board, Particle Board

- Lime Mud
- Wood Chips
- Hogged Bark
- Shavings
- Pulp
- Fiber Sludge
- Screenings

### Agriculture

- Fertilizer
- Corn Gluten
- Sugar Beets/Cane Processing
- Chopped Hay
- Grain
- Powder
- Salt
- Flour
- Meal
- Peat
- Pellets

### Hospital Waste Processing, Recycle Plants

- Shredded Cans
- Bottles
- Paper
- Medical Disposables
- Heavy Reject
- Pulper Reject
- Screenings

### Wine & Beverage Industries

- Whole Berry
- Stems
- Pumice
- Fruit Peels

### Waste Water • Solid Waste Treatment

- Sludge
- Grit
- Screenings
- Solids Removal

### Heavy Industrial

- Ash
- Recycle Batteries
- Carbon Black
- Shredded Tires
- Coal
- Metal Chip Handling
- Bentonite
- Caustic Soda
- Bauxite
- Iron Ore
- Limestone
- Insulation

## Martin SUCCESS STORIES

In any industry, unscheduled downtime can cost you money. Conveyor downtime can impact your production quotas and shipments of your finished products, which ultimately can affect your profits.

At *Martin* we understand how important it is to keep your equipment operating. Below are some examples of how *Martin* was able to help.

### Compost

**Application:** 50 TPH of compost conveyed to Drier.

**Problem:** Existing drag conveyor had two strands of drop forge chain. Chain would routinely break under load, shut down line, and require total clean out of 85' long drag.

**Solution:** *Martin's* Shaftless Conveyor provided the ideal choice for conveying wet and stringy compost. No internal pipe, no hangers, and no build up on trough bottom resulted in a huge performance improvement and cost savings over the earlier system.

**Documented Savings:** Customer's estimated savings was \$1.2 million/year.

### Lime

**Application:** Burned lime being conveyed via Vibrating Conveyor.

**Problem:** Existing conveyor was noisy, difficult & expensive to maintain. Product spillage meant expensive housekeeping. A large replacement inventory was required, and vibrations were felt throughout facility.

**Solution:** *Martin's* Shaftless Conveyor provided low maintenance costs, total enclosure and quiet operation with only two moving parts, as well as the ability to handle oversized material.

**Documented Savings:** Customer's estimated savings \$125,000/year.

**USA**  
General Offices Sales and Manufacturing  
Arlington, TX  
817-258-3000 (FAX 817-258-3333)

Sales and Manufacturing  
Danielsville, PA  
610-837-1841 (FAX 610-837-7337)  
Fl. Worth, TX (Conveyor & Tool Div.)  
817-258-3000 (FAX 817-258-3173)  
Montpelier, OH  
419-485-5515 (FAX 419-485-3565)  
Sacramento, CA  
916-441-7172 (FAX 916-441-4600)

Scottsdale, GA  
404-292-8744 (FAX 404-292-7771)

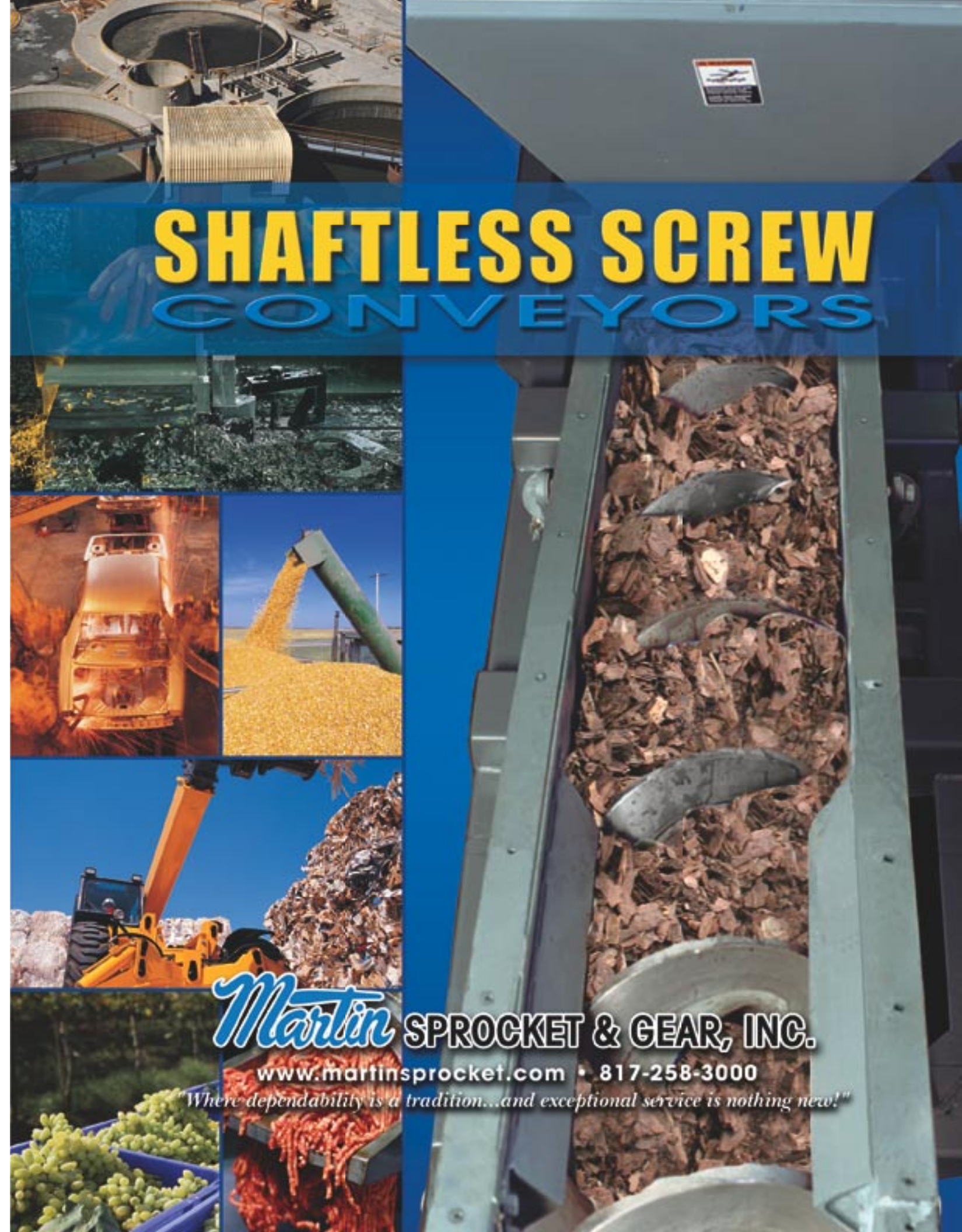
Mini Manufacturing Centers  
Boston, MA  
508-634-3990 (FAX 508-634-3998)  
Charlotte, NC  
704-394-9111 (FAX 704-394-9122)  
Chicago, IL  
847-298-8844 (FAX 847-298-2967)  
Denver, CO  
303-371-8466 (FAX 303-371-7116)

Detroit, MI  
734-367-0238 (FAX 734-367-0547)  
Houston, TX  
713-849-4330 (FAX 713-849-4807)  
Kansas City, MO  
816-231-5575 (FAX 816-231-1959)  
Los Angeles, CA  
323-728-8117 (FAX 323-722-7526)  
Minneapolis, MN  
952-829-0623 (FAX 952-944-9385)  
Portland, OR  
503-223-7261 (FAX 503-221-0203)

Tampa, FL  
813-623-1705 (FAX 813-626-8953)  
Wayne, NJ  
973-633-5700 (FAX 973-633-7196)

Manufacturing Only  
Abilene, TX  
Clarksville, TX  
Dallas, TX  
Mansfield, TX  
Paragould, AR (Sintered Metal & Plastics Div.)

**CANADA** Sales and Manufacturing  
Mississauga, Ontario, Canada  
905-670-1991 (FAX 905-670-2110)  
Ayr, Ontario (Conveyor Div.)  
519-621-0546 (FAX 519-621-4413)  
**MEXICO** Sales and Manufacturing  
*Martin* Sprocket & Gear de Mexico,  
S.A. de C.V.  
Toluca, Edo. de México  
+52 722 276 0800 (Fax: +52 722 276 0801)  
Monterrey  
+52 811 156 6830 (FAX +52 811 156 6833)



# SHAFTLESS SCREW CONVEYORS

**Martin SPROCKET & GEAR, INC.**

www.martinsprocket.com • 817-258-3000

Where dependability is a tradition...and exceptional service is nothing new!

# Martin Shaftless Screw Conveyors — The Problem Solver

Martin Shaftless Screw Conveyors are the ideal solution for hard-to-transport materials ranging from irregularly shaped dry solids such as scrap wood and metals, to semi-liquid and sticky materials including pulp, compost, food-processing refuse, hospital waste, and wastewater products.

Martin Shaftless Conveyors' simple, pipeless design employs fewer parts than conventional shafted-screw conveyors, reducing lifetime maintenance costs. It enables higher trough loading and lower RPMs, maximizing the volume of materials conveyed. Martin's Shaftless Screw eliminates jamming and buildup typical in shafted-screw conveyors for greater uptime, higher efficiency, and lower maintenance. It

eliminates hanger bearings and end bearings to reduce maintenance and increase efficiency – enabling direct transfer to another conveyor.

Martin Shaftless Screw Conveyors and components are manufactured and stocked at our branches strategically located near major industrial markets across North America. This ensures rapid shipping on new installations and next-day delivery on stock replacement parts.

Several test units, as well as video footage of actual applications, are available for demonstration of the unique capabilities of the shaftless screw. Discover the benefits Martin conveyors can bring to your business – call us today to arrange an on-site demo using your product.

FEATURE	FUNCTION	BENEFIT
No Center Pipe Required	Eliminate buildup on pipe	Able to convey large irregularly shaped and sticky product
Continuous Flight	Hanger bearings not required	Eliminate costly hanger bearing maintenance
Higher Trough Loading	Can handle more product at lower RPMs	Longer wear life
Can use Blind Endplate on Tail End	No tail bearings or seals to maintain	Reduces maintenance and replacement costs
No End Bearings Needed	Direct transfer to another conveyor, incline, vertical or horizontal	Can be designed to fit within space limitations or plant layout
Side Inlet Feeding	No vertical transition necessary	Lower installation cost — Reduces headroom
3/4" - 1" Thick Flighting	Long lasting due to wear resistance	Increases uptime
Cold Formed Flight	High Brinell	Longer life
Wide Variety of Liners	Offer proper liner for specific application	Reduced wear resulting in lower maintenance costs
Simple Design	Fewer operating parts	Lower overall operating costs
Compact Drive System	Doesn't require belts	Easy to maintain
Can be Completely Enclosed	Prevent material leakage — Reduces dust	Eliminates environmental or product contamination
Manufactured in North America	Quality Built — Local Stock	Fast delivery



**Martin CONVEYOR DIVISION**  
811 FOURTH AVENUE  
MANSFIELD, TX 76063-0193



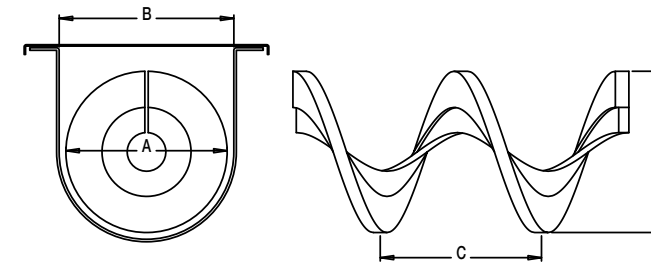
## CONFIGURATIONS / OPTIONS



Shaftless Screw Live Bottom

Type of Steel	<ul style="list-style-type: none"> <li>Carbon Steel</li> <li>High Brinell Carbon Steel</li> <li>Stainless Steel</li> </ul>
Capacity	Up to 17,000 CFH
Diameter	6" to 30" (and larger)
Pitches	Full, 2/3, 1/2
Trough	CEMA Standards
Options	<ul style="list-style-type: none"> <li>Liners                             <ul style="list-style-type: none"> <li>- UHMW</li> <li>- Xylethon</li> <li>- Tivar</li> <li>- AR</li> </ul> </li> <li>Rider Bars</li> <li>Inspection and Overflow Hatches</li> <li>Various Drive Configurations Available</li> <li>Housings: CEMA Standard U-Trough or Split Tubular Housing</li> </ul>
Configurations	<ul style="list-style-type: none"> <li>Single or Inner/Outer Flight Design</li> <li>Twin Screw</li> <li>Multiple Live Bottom Feeders</li> <li>Inclined Screw Conveyors</li> <li>Grit Washers</li> <li>Vertical</li> </ul>

\*Conveyors shown without cover for illustration purposes only. Please follow manufacturing safety guidelines when operating conveyors.



50% Trough Loading *					
Nom. Dia.	A Dia.	B Inside	C Pitch	CFH @ 1 RPM	Max RPM
6	6	7	6	2.5	25
9	9	10	9	9.1	25
10	10	11	10	12.7	25
12	12	13	12	21.6	25
14	14	15	14	34.7	25
16	16	17	16	51.9	25
18	18	19	18	75.1	25
20	20	21	20	104	25
24	24	25	24	182	25
30	30	31	30	359	25

\* Based on horizontal application only.

