

## ASGCO® - Skalper Primary Belt Cleaning System

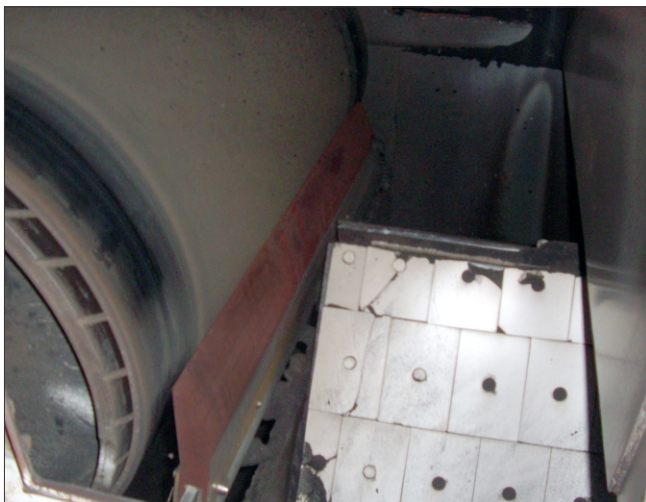
<b>Industry</b>	Mid-Western PRB Coal Fired Power Plant
<b>Application</b>	Installed on a 36" belt width cascade conveyor
<b>Product</b>	ASGCO® - Skalper Primary Belt Cleaning System
<b>Objective</b>	Eliminate carry-back, reduce housekeeping, minimize safety issues, reduce maintenance needs and extend blade life

### Challenge

Excessive buildup of material carry-back and dust from inadequate belt cleaners, resulting in housekeeping and safety issues, combined with OSHA's Combustible Dust National Emphasis Program (NEP) have made things very difficult for this Mid-western coal-fired power plant. The increased labor for housekeeping issues and the possibility of strict fines added increased emphasis for this power plant to improve its belt cleaner systems.

### Recommendations:

Following a complete conveyor survey and review of the systems requirements, the ASGCO® Skalper® Belt Cleaners with E-Z Torque™ Tensioner were best suited to address all areas of concern for these applications.



### Results

After months of daily use, the Skalper® units have provided excellent cleaning. Reduced hours on housekeeping, safety issues, and wash downs. Belt tracking issues due to return idler build-up has been eliminated. Manpower and maintenance time has also been greatly reduced due to the effective performance of the E-Z Torque™ Tensioner which has also greatly extended their blade life.

### Skalper® Belt Cleaner



- Skalper® (patented) one piece blade maintains an effective cleaning edge throughout the life of the blade
- E-Z Torque™ (patented) torsion style tensioning system provides a constant consistent tension throughout the life of the blade
- Quick blade change outs and minimal maintenance

Maximum Belt Speed – 1000 fpm (5.0 m/sec)

Pulley Diameter – 16" – 36" (400 – 900mm)

Applications – Coal Fired Power Plants, Hard Rock Mining, Steel Mills, Iron Ore, Aggregate and Mineral (Phosphate, Potash, Salt) Mining