

In any industry, unscheduled downtime can cost you money. Conveyor downtime can impact your production quotas and shipments of your finished products, which ultimately can affect your profits.

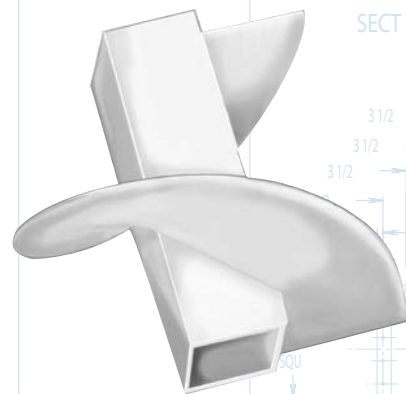
At *Martin* we understand how important it is to keep your equipment operating. That's why we have developed special expertise in metallizing, design, metal improvement and many other methods to keep you running efficiently.

We have a long history of success in many varied industries. Some of our success stories could be the solution to your needs: Our Cone Screw Design that eliminates premature pipe breakage on most feeder screw applications; Our inner/outer ribbon screws that mix bulk materials more effectively than any other method; Our exclusive hard iron bearings, the only self-lubricating kind in the industry.

## Over 50 Years of Manufacturing Screw Conveyor Equipment

### MTO Screws / Large Flights

- Flights up to 10 ft. diameter.
- Flights up to 1-1/2" thick.
- Laminated flights for heavier requirements.
- Trough up to 1" thick.



46 ft. long, 78 in. diameter double lead water lift screws made by *Martin*.

Modular plastic screws, available in Polyurethane, Polypropylene, and Polyethylene, are easily replaceable without welding or burning.

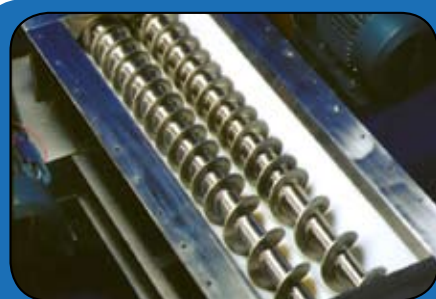


36 ft. long, 38 in. diameter 2205 duplex SS pulp screw.

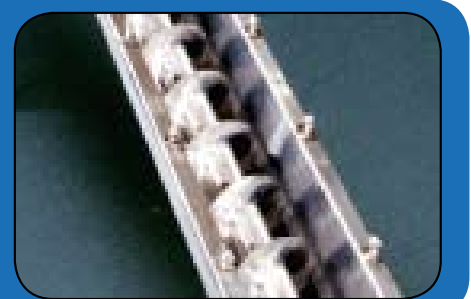


30 ft. long, 48 in. diameter 316SS paddle type screw.

### Other Custom Capabilities



- CEMA IV Weld finishes.
- Polished conveyor for sanitary and chemical applications.
- Bonded construction modular plastic conveyor for sanitary applications.
- Extreme temperature solutions.
- Stringent tolerance capabilities.



## Quick or Emergency Delivery

We are willing and able to meet emergency delivery requirements due to breakdown or deadlines.

- Quick alteration of stock parts.
- Fast-Track Made-to-Order conveyors and parts.

### Standard Screw Conveyors and Components

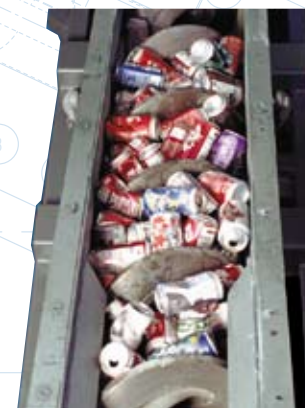
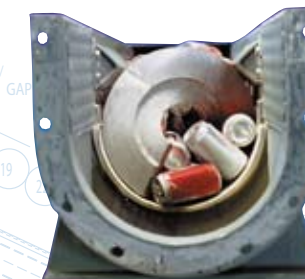
*Martin* offers one of the largest inventories of CEMA standard Screw Conveyor Components in North America.

### Shaftless Screw Conveyor "The Problem Solver"

This pipe-less heavy duty screw solves problems that traditional screw cannot. No pipe, no Hanger Bearings, fewer problems.

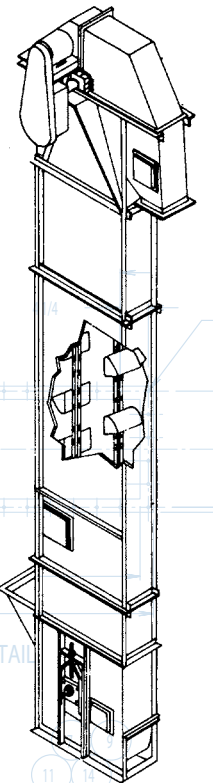
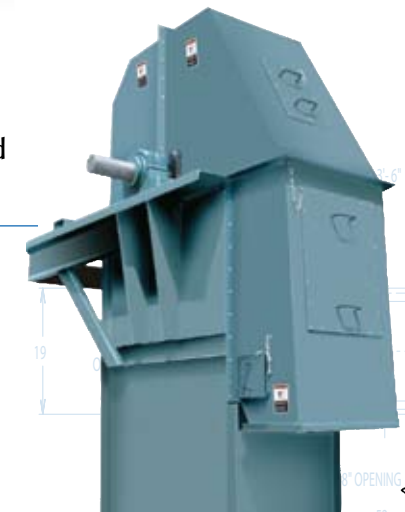
**Solves problems associated with:**

- Large/irregular lump size.
- Stringy/sticky materials.
- Equipment that is difficult to access/maintain.
- Excessive downtime/maintenance.



Conveyors shown without covers for illustration purposes only. Please follow manufacturers safety guidelines when operating conveyors.

### Bucket Elevators



- Standard Duty Centrifugal Continuous
- Mill Duty
- Super Capacity
- High speed and more....

### Wing & Drum Pulleys



- Standard Duty
- Mine Duty
- Quarry Duty
- Other Specialty Pulleys Available

### Material Options

AR200, AR400, AR500, 304SS, 316SS, 2205SS, Manganese, and many other alloys. Chromium Carbide is one of numerous hard facing options available.

### Drag Conveyors



- Types**
- Round Bottom
  - L & S Path
  - Flat Bottom
  - Mill Duty

### Popular Applications

- Ash Handling
- Wood Waste
- Grain
- Dust Removal





# TOTAL Material Handling PACKAGE



Our extensive industry experience enables us to provide you with the answers to those troublesome areas that impact your ability to get product out the door. Industry specific product guides are available for a number of targeted markets.



## Specialty Applications

- Pulp & Paper
  - Dust Collection/Air Pollution Control
  - Food Processing
  - Waste-to-Energy
- Rendering
  - Wine & Beverage
  - Mixer & Shredder
  - Chemical & Heavy Industrial
- Wastewater Treatment
  - Wood Products
  - Aggregate
  - Cement

## 30 North American Locations



**Martin CONVEYOR DIVISION**  
811 FOURTH AVENUE  
MANSFIELD, TX 76063-0193



For more information contact a branch near you:

**USA**  
**Corporate Offices Sales & Manufacturing**  
**Arlington, TX**  
817-258-3000 (FAX 817-258-3333)  
**Sales and Manufacturing**  
**Albemarle, NC (HD Conveyor Pulleys)**  
704-982-9555 • (FAX 704-982-9599)  
**Danielsville, PA**  
610-837-1841 (FAX 610-837-7337)  
**Ft. Worth, TX (Conveyor & Tool Div.)**  
817-258-3000 (FAX 817-258-3173)  
**Montpelier, OH**  
419-485-5515 (FAX 419-485-3565)  
**Sacramento, CA**  
916-441-7172 (FAX 916-441-4600)  
**Scottsdale, GA**  
404-292-8744 (FAX 404-292-7771)

**Tigard, OR (Milled Plastics)**  
(503) 439-9266 (FAX 800-683-9895)  
**Mini Manufacturing Centers**  
**Boston, MA**  
508-634-3990 (FAX 508-634-3998)  
**Charlotte, NC**  
704-394-9111 (FAX 704-394-9122)  
**Chicago, IL**  
847-298-8844 (FAX 847-298-2967)  
**Denver, CO**  
303-371-8466 (FAX 303-371-7116)  
**Detroit, MI**  
734-367-0238 (FAX 734-367-0547)  
**Houston, TX**  
713-849-4330 (FAX 713-849-4807)  
**Kansas City, MO**  
816-231-5575 (FAX 816-231-1959)

**Los Angeles, CA**  
323-728-8117 (FAX 323-722-7526)  
**Minneapolis, MN**  
952-829-0623 (FAX 952-944-9385)  
**Portland, OR**  
503-223-7261 (FAX 503-221-0203)  
**Tampa, FL**  
813-623-1705 (FAX 813-626-8953)  
**Wayne, NJ**  
973-633-5700 (FAX 973-633-7196)  
**Manufacturing Only**  
**Abilene, TX • Clarksville, TX**  
**Dallas, TX • Mansfield, TX**  
**Paragould, AR**  
(Sintered Metal & Plastics Div.)

**CANADA Sales and Manufacturing**  
**Mississauga, Ontario, Canada**  
905-670-1991 (FAX 905-670-2110)  
**Ayr, Ontario (Conveyor Div)**  
519-621-0546 (FAX 519-621-4413)

**MEXICO Sales and Manufacturing**  
**Martin Sprocket & Gear de Mexico, S.A. de C.V.**  
**Toluca, Edo. de México**  
+52 722 276 0800  
(Fax: +52 722 276 0801)  
**Monterrey**  
+52 811 156 6830  
(FAX +52 811 156 6833)



- Material Handling Solutions
- CEMA Standard Screw Conveyor Components
- Shaftless Screw • Drag Conveyors
- Bucket Elevators
- Wing & Drum Pulleys
- Made-to-Order Screw Conveyors

**Martin SPROCKET & GEAR, INC.** • 3100 Sprocket Drive Arlington, TX 76015 • 817-258-3000  
"The One You Rely On" • [www.martinsprocket.com](http://www.martinsprocket.com)

**Martin SPROCKET & GEAR, INC.**  
[www.martinsprocket.com](http://www.martinsprocket.com)

Copyright © 2008 Martin Sprocket & Gear, Inc. • All Rights Reserved 690 MHB TMHP 1109