

*Providing the World Bulk Material Handling Industry
with Productive, Safe and Reliable "Complete Conveyor Solutions."*

Pulley Lagging

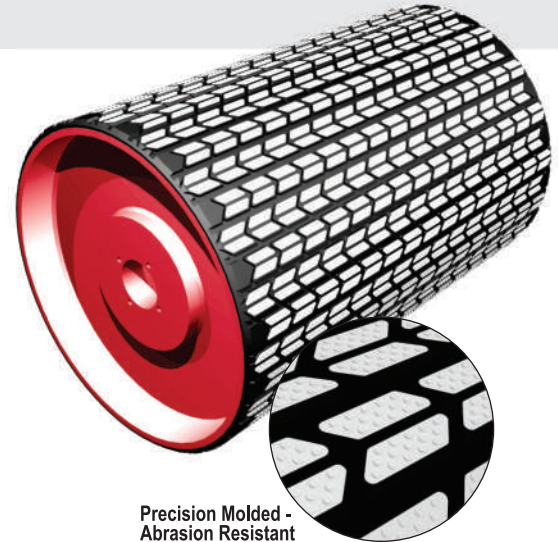


PULLEY LAGGING

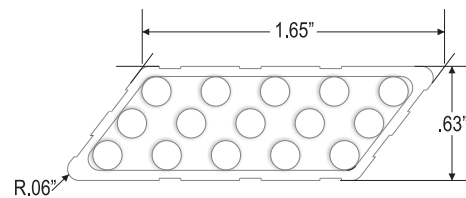
Arrowhead™ Ceramic Pulley Lagging

Arrowhead™ Ceramic Pulley Lagging provides the solution when conventional rubber lagging fails to correct a belt slippage problem and/or when rubber lagging wears prematurely. Our unique Arrowhead ceramic is designed for the highest drive factors unlike the conventional square tiles.

- **Increase Productivity** - by delivering increased traction between the belt and pulley. This allows for lower belt tension than with rubber lagging.
- **Precision Molder** - Only product providing diagonal grooves on ceramic tile lagging for self-cleaning
- **Improved Belt Tracking** - due to the Arrowhead™ patterns self-cleaning ability, which reduces material build-up and thereby eliminates the major source of misalignment.
- **Bonding Strength** - that is superior to others, due to 1/8" (3mm) of our neoprene compound vulcanized into bottom-side of the pulley lagging.
- **Extreme Durability** - in high feed rates and high conveying speeds and abrasive or highly wet or dry applications as seen in below ground and above ground mining.
- **Easy Installation** - can be done in place, on plant site, at your local distributor or at the pulley manufacturer. Each strip is 10" (250mm) wide x pulley face.
- **3 Year Warranty**



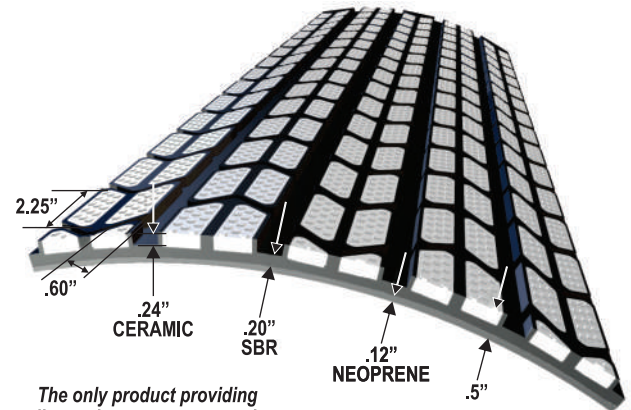
Precision Molder -
Abrasion Resistant



Arrowhead™ Nat Ceramic Lagging Information							
Part Number	BW in	BW mm	Thick	Ceramic in	Ceramic mm	Rubber in	Rubber mm
ASG-10X24-CL	24"	610	1/2"	24-7/8"	632	9	229
ASG-10X30-CL	30"	763	1/2"	31-1/4"	794	11	279
ASG-10X36-CL	36"	915	1/2"	36-1/4"	921	13	330
ASG-10X42-CL	42"	1067	1/2"	41-1/8"	1045	15	381
ASG-10X48-CL	48"	1220	1/2"	48-1/2"	1232	17	432
ASG-10X54-CL	54"	1372	1/2"	55-7/8"	1419	19	483
ASG-10X60-CL	60"	1524	1/2"	60-3/4"	1543	21	533
ASG-10X72-CL	72"	1829	1/2"	73-1/8"	1857	23	584
ASG-10X84-CL	84"	2134	1/2"	83-1/8"	2111	33	838

Arrowhead™ MSHA Ceramic Lagging Information							
Part Number	BW in	BW mm	Thick	Ceramic in	Ceramic mm	Rubber in	Rubber mm
ASG-10X24-MSHA-CL	24	610	1/2"	24.41	620	47.24	1200
ASG-10X30-MSHA-CL	30	762	1/2"	30.71	780	53.15	1350
ASG-10X36-MSHA-CL	36	915	1/2"	37.01	940	59.06	1500
ASG-10X42-MSHA-CL	42	1067	1/2"	43.31	1100	64.96	1650
ASG-10X48-MSHA-CL	48	1220	1/2"	47.24	1200	70.87	1800
ASG-10X54-MSHA-CL	54	1372	1/2"	56.69	1440	78.74	2000
ASG-10X60-MSHA-CL	60	1524	1/2"	62.99	1600	86.61	2200
ASG-10X72-MSHA-CL	72	1829	1/2"	72.83	1850	94.49	2400
ASG-10X84-MSHA-CL	84	2134	1/2"	84.00	2134	101.00	2565
ASG-1-10X60-MSHA-CL	60	1524	1"	62.99	1600	60.61	1539
ASG-1-10X72-MSHA-CL	72	1829	1"	72.83	1850	94.49	2400
ASG-1-10X84-MSHA-CL	84	2134	1"	82.09	2085	102.36	2600

Ceramic + 17 = Total Length



The only product providing diagonal grooves on ceramic tile lagging for self-cleaning.

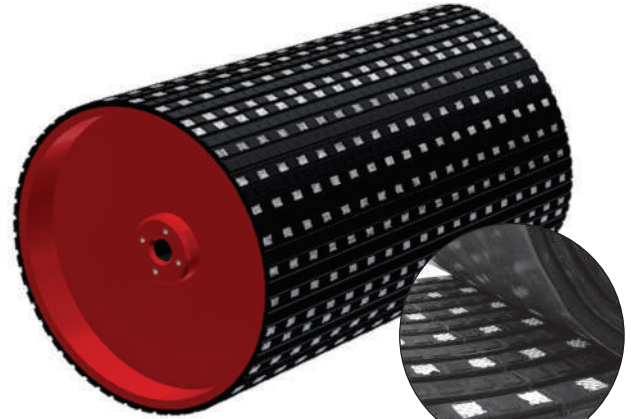
Design Features - Tiles	
ISOMETRIC VIEW	<ul style="list-style-type: none"> • High grade aluminum oxide ceramic • Tile fully enclosed by rubber • Rounded corners allow for better adhesion between the rubber and the tile

Arrowhead™ Ceramic Lagging																			
Diam.	12"	14"	16"	18"	20"	22"	24"	26"	28"	30"	32"	34"	36"	38"	40"	42"	48"	54"	60"
# of Stripes	4	5	6	6	7	7	8	9	9	10	11	11	12	12	13	14	16	17	19

Semi-Ceramic™ Pulley Lagging

ASGCO® has added a **Semi-Ceramic™ Pulley Lagging** to their product line, featuring 40% coverage for smaller pulley's, non-drive pulley's and bend pulley's. ASGCO's Semi-Ceramic™ Pulley Lagging provides the solution when conventional rubber lagging fails to correct belt spillage and wears prematurely.

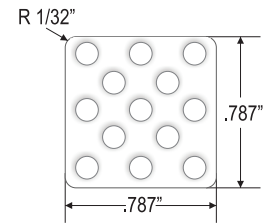
- **High Grade Ceramic Tile** – aluminum oxide ceramic provides robust performance in dry, wet, or muddy applications.
- **Pre-Chemical Backing** – for ease in installation
- **Increase Productivity** – by delivering increased traction between the conveyor belt and pulley, allowing for lower belt tension than with rubber lagging.



Abrasion Resistant - tiles are fully encased by rubber

Semi-Ceramic™ Tile Statistics	
Total surface area of the ceramic, percentage for the total?	35%
Width of each tile?	0.787" (20mm)
Length of tile?	0.787" (20mm)
Total thickness of ceramic?	0.197" (5mm)
Percent of ceramic are raised?	27%
Height of ceramic nubs that extend above the ceramic tile?	.0625" (1.6mm)
Diameter of ceramic nub?	0.118" (3mm)
Number of nubs?	13 per tile

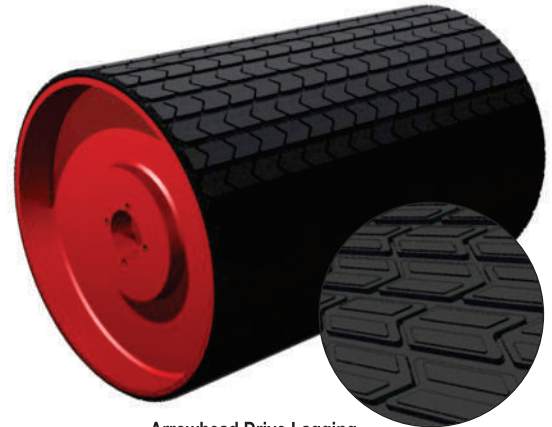
Semi-Ceramic™ Pulley Lagging	
Part Number	Roll Dimension (120lbs)
ASG-15x32.81-SCRL	15" (385mm) wide x 32.81' (10M) long



Arrowhead™ Drive & Smooth Rubber Pulley Lagging

Arrowhead™ Drive and **Smooth Pulley Lagging** is the solution, in an application where rubber is the answer, to help eliminate slippage, increase pulley life and to improve production. A specially formulated combination of synthetic, natural, and neoprene rubber compounds provides our pulley lagging with excellent gripping strength and abrasion resistance.

- **Increase Productivity** - by delivering increased traction between the belt and pulley, and increasing pulley life and reducing build-up.
- **Bonding Strength** - that is superior to others, due to 3mm of our neoprene compound vulcanized into bottom side of the lagging.
- **Easy Installation** - can be done in place, on plant site, at your local distributor or at the pulley manufacturer. Each roll is ½" or ¾" thick x 10" wide by 21.3' long, or in 278' rolls.



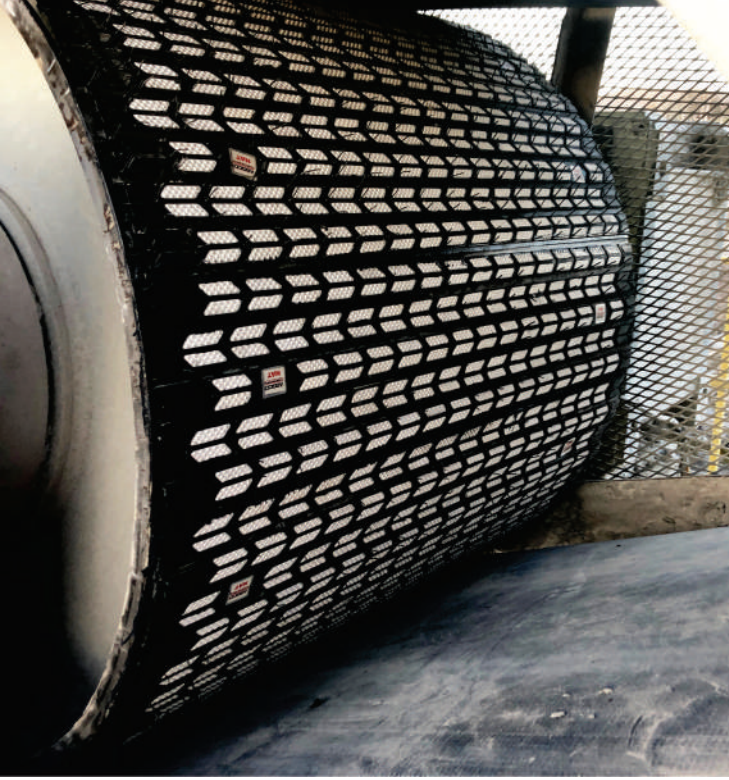
Arrowhead Drive Lagging

Arrowhead™ Drive & Smooth Rubber Lagging	
Amount of Rolls Needed to Lag "X" Pulley	Pulley diameter x 3.14 = Pulley circumference
	Pulley Circumference / 10 = # of Arrowhead™ Lagging Strips
	# of strips needed x (pulley face +2) = # of total inches of lagging
	# of total inches of rubber lagging / 255 = # of rolls
Amount of Cement Needed to Lag "X" Pulley Size	Pulley diameter x 3.14 = Pulley circumference
	Circumference face width / 144 = Pulley surface area in sq. ft.
	Pulley surface area in sq. ft. / 10 = Amount of cement in quarters needed



Smooth Lagging

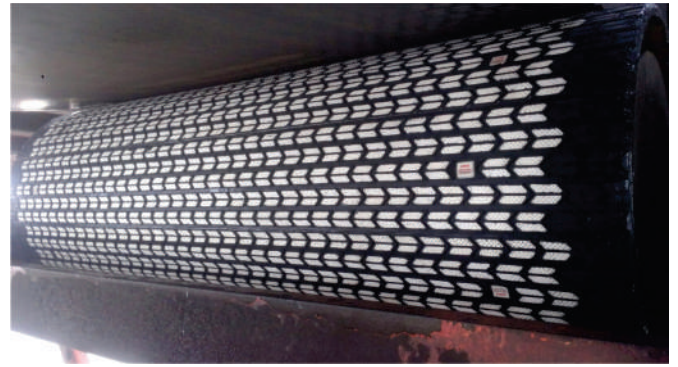
INDUSTRY APPLICATIONS



Arrowhead Ceramic Pulley Lagging - Aggregate Plant Installation



Arrowhead Ceramic Pulley Lagging - Asphalt Plant Installation



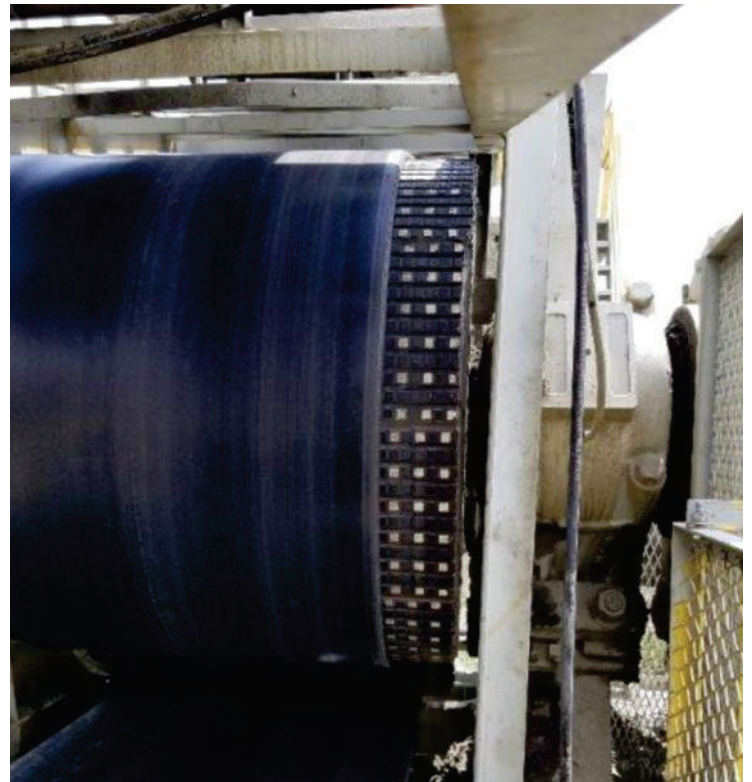
Arrowhead Rubber Pulley Lagging - Bulk Shipping Terminal Installation



Arrowhead Rubber Pulley Lagging - Bulk Shipping Terminal Installation



Semi-Ceramic™ Pulley Lagging - Bulk Shipping Terminal Installation



Semi-Ceramic™ Pulley Lagging - Aggregate Plant Installation