

Complete Conveyor Services

ASGCO[®]
Mid-Atlantic
Conveyor Solutions

Services



AGGREGATE



RECYCLING



POWER PLANT



CEMENT



COAL



Serving our customer's up and down the east coast

- Weldon Materials
- New Enterprise Stone & Lime
- Carmeuse
- Lafarge Corp
- Wheelabrator
- Lehigh Hanson
- Vulcan Materials
- Martin Marietta
- Stavola Construction
- Trap Rock Industries
- Pennsy Supply
- Luck Stone
- Keystone Cement
- Cargill Salt
- Gibraltar Rock
- Alan Myers
- Victaulic
- Chambers Co-Generation
- Lehigh Cement
- Genon Energy
- Covanta
- Glen Gery Corp
- Talen Energy
- Consol Energy
- Waste Management
- Sims Metal Management
- Constellation Energy
- Norfolk Southern
- Lehigh Anthracite Coal
- New York DEP
- Kinder Morgan
- United Parcel Service
- Kaolin Mushroom Farm
- Old Castle Materials Group
- Rohrsers Quarry
- Harsco Corp
- Domino Sugar
- Inashco
- Baltimore Scrap Corp
- Aryzta LLC
- Carpenter Company
- Lancaster Foods
- M&M Mars
- Kellogs
- GAF
- Spectraserv Inc
- Tilcon
- Volmar Construction
- Eastalco Aluminum
- Grace Davison
- CSX
- Tunnel Ridge Coal Co.

Turn-Key Services

- MSHA/OSHA First Aid Trained and Certified
- Safety Program
- Foremen with an average of over 25 years of experience
- 24 hour availability
- Complete project assessment and management
- Conveyor reconditioning
- All necessary rigging
- Counterweight lifting
- Idler removal and replacement
- Conveyor test run and belt tracking after installation
- Clean system of build-up
- Product installation
- Pulley lagging in our shop, or on your conveyor
- Load zone installations
- Skirting system installation
- Guarding installations
- Chute lining installation
- Counterweight measurement
- Conveyor belt installation
- Belt tracking
- Field belt winding with 96" wide, 40,000 lbs. capacity using one of our completely self-contained units
- Complete conveyor Laser Alignment services
- While performing services on your conveyor, our crews can provide an inspection report detailing areas that require attention
- All service vehicles are equipped with 480V 3Phase generators often eliminating the need for plant electricians for hook-up
- Belt splicing of all types of belting in all industries including a wide variety of mechanical splices, cold vulcanizing, and hot vulcanizing - up to 96"
- Belting, Idlers, Pulleys, Shafts, Bearings, Cleaners, Skirting, Liners, and other conveyor components are in stock to provide you with immediate service when you need it
- We sell what we install, providing product familiarity that enables our technicians to tailor the installations to the customer's needs, and the products best results
- Our service crews work in a wide variety of industries, which gives us experiences that can be applied to your circumstances.



Conveyor Belt Splicing and Vulcanization

ASGCO® is a certified belt splicing company and continues to invest in the latest technology of vulcanizing presses and equipment to continually improve our conveyor belt splicing techniques. Our service technicians are trained in the latest splice procedures and material usage for conveyor belting.

Field Services & Fabrication Capabilities

• Experienced Field Service Technicians

Technicians are MSHA trained and Manufacturer Splice Certified. Prompt, reliable emergency service is available 24/7/365 days a year to help keep your conveyor system running like new.

• On-Site and On-Time Fabrication and Completion

Essential in any installation to shorten the schedule and minimize costly downtime.

• Safety in the Workplace

The significance of ensuring safety in the workplace has always been a priority at ASGCO®, this is why ASGCO® strives for the highest level of awareness and preparedness through continuous training programs and safety certifications for our employees and the products that we manufacture.

• Training

Field crew members undergo rigorous in-house and factory splice training resulting in an ideal splice for all belt constructions. We work safely – all crews are certified to MSHA parts 46 and 48B, OSHA 10 and 30 where appropriate.



Conveyor Belt Splicing and Vulcanization

- **Fabric & Steel Cord**
- **Hot Vulcanizing Services** - up to 96". All fabric, steel cable and Kevlar up to 3,000 PIW
- **Cold Vulcanizing** - up to 120"- All fabric
- **Mechanical Fasteners** - permanent splice and for repair of holes and rips.
- **Light Weight Conveyor Belting** - food, industrial and packaging styles available.
- **Belt Stringing Services** - up to 96" wide and 40,000 lb wind up capacity.



Other Conveyor Services

- **Pulley Lagging** - all styles and types of head, tail, snub, bends, take-ups and drives. Lagged in shop or in place on system.
- **Component Change Out** - idlers, bearings, drives, counter weights, take-ups; repair old or retrofit with new.
- **Mechanical Work** - coupling alignment, motor change out, controlled start device.
- **Installation of Belt Cleaner Systems**
- **Maintenance Programs**
- **Steel, Chute and Skirtboard Fabrication**

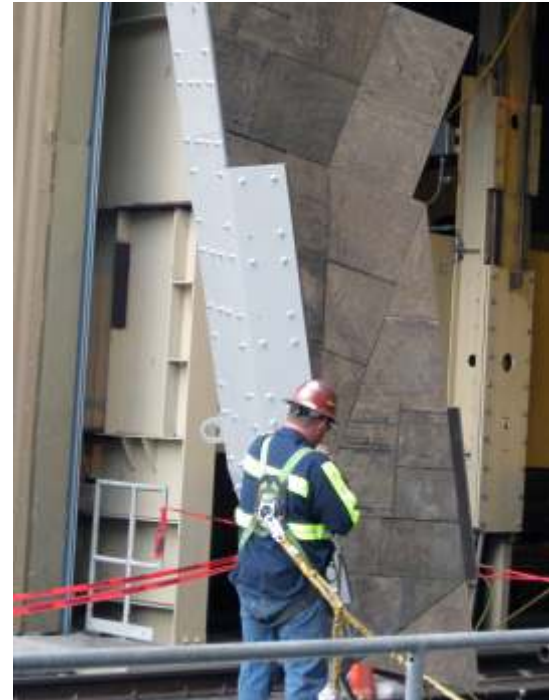


Conveyor Chute Installation and Lining

ASGCO®'s Chute Linings and Skirtboard are designed to be an integral part of a conveyor system. Our pre-engineered chute lining protects and cushions the chute from the material being handled; Skirtboard prevents fugitive materials from escaping and damaging the conveyor loading areas. We can build, design, fabricate and install chutes, and also repair and re-align existing chutes. Combining the right liner with the correct chute design improves overall system efficiency and maximizes material transfer, promoting efficient flow, dust suppression and reduced buildup inside the chute.

ASGCO® wear liner products are the longest lasting, most cost effective in the industry.

- **Steel Liners** - Armorite®, AR 400 Internal Liners, Stainless Steel and Nitronic 30
- **Ceramic Liners** - X-Wear™, X-Wear MDX™ and X-Wear™ Canoe Skirt Liners
- **Urethane Liners** - Wide array of urethane products depending upon the application (Classifier Shoes, Hydrocyclone, etc.)
- **Plastic Liners** - UMHW, Nylon
- **Chromium Carbide Liners**
- **Rubber Liners**



Conveyor Laser Alignment

ASGCO®'s Laser Alignment Services improves the overall conveyor performance using state-of-the-art laser equipment and digital processors. ASGCO® technicians can accurately analyze the alignment of all the conveyor components and structure of the conveyor for better efficiency.

- **Improves Conveyor Efficiency** - by extending belt life and components, improving dust control, and reduced power consumption.
- **Provides Accurate Analysis** - of all conveyor pulleys, drives, take-ups, components and structure.
- **Precise Corrections** - are identified on a detailed conveyor status report via a computer printout on site after the analysis.
- **Total Satisfaction Guaranteed (TSG)** - of our laser alignment and conveyor services is guaranteed each and every time.



Laser Alignment identifies the areas of the conveyor that are responsible for:

- Belt mis-tracking
- Abnormal or premature pulley lagging wear
- Premature bearing failure
- Pulley end disc failure
- Material spillage
- Idler, frame, chute damage