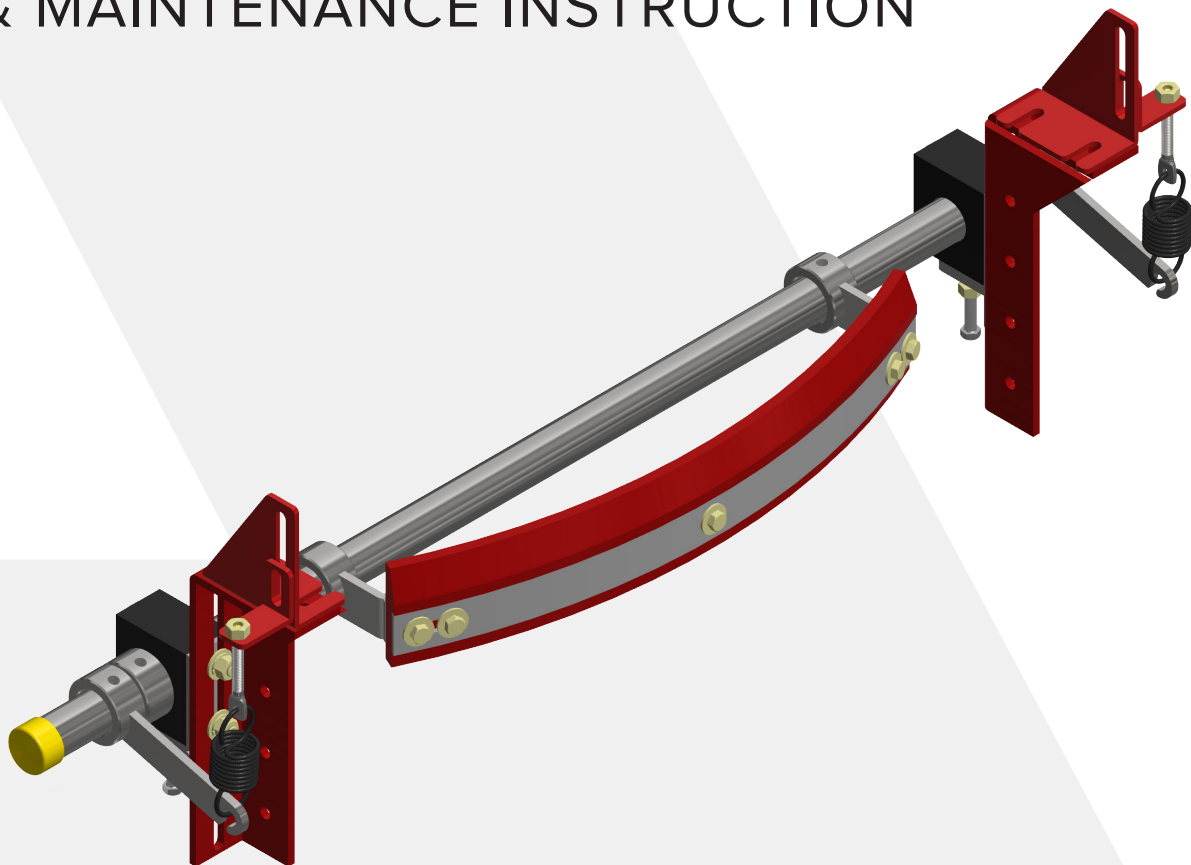


U-Scrape[™]

with Bolt-Up Tensioner System

INSTALLATION, OPERATION & MAINTENANCE INSTRUCTION



SAFETY FIRST

Important Safety Notice

Always observe the basic rules of safety when working with any conveyor system. To avoid injury and equipment damage, be sure that all controls to the conveyor are locked out and the power source is disconnected at all times during installation.

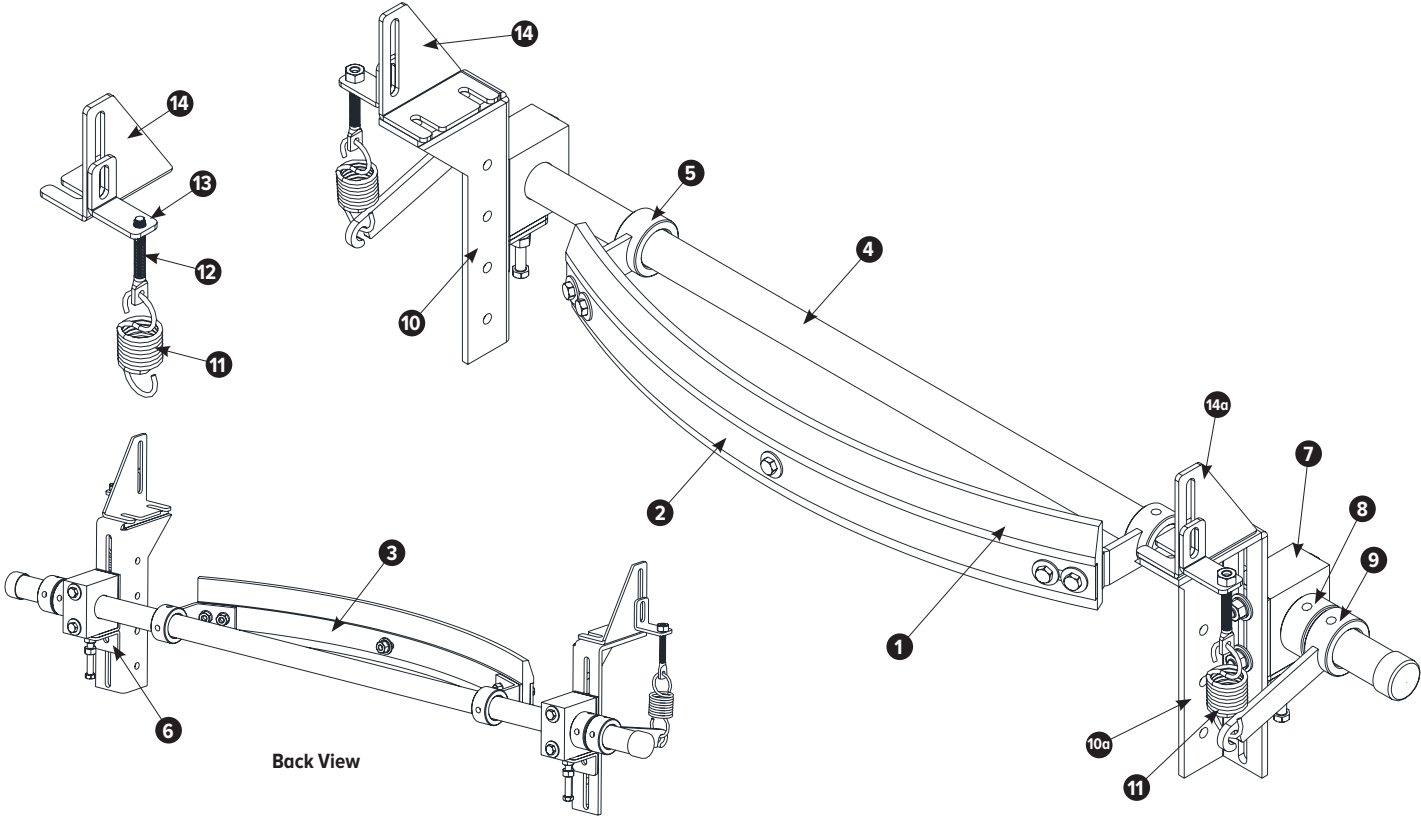
WARNING

Please completely read and understand these instructions before attempting the installation of the belt cleaning system. Failure to do so could lead to serious injury and equipment damage. Ensure that all controls and power sources to the conveyor system are properly disconnected and locked out while installing, adjusting or maintaining the belt cleaning system. Never attempt any installation, adjustment, or service procedure while the conveyor is in operation.

Ensure that all required safety equipment is on hand, such as a fire extinguisher and first-aid kit before proceeding. Those who use and maintain the belt cleaning system must be properly trained in its proper use, know of its dangers, and read and understand this entire manual before attempting to install, operate, or service this device. Failure to observe all instructions could result in serious injury. It is the owner's responsibility that the owner and each operator read and be familiar with this manual.

Please contact our ASGCO engineering Department at 1.800.344.4000 if you have further questions or are unsure of these procedures.





Key	Description	Part Numbers
1	Wiper Blade (Urethane)	ASG-URE-BLD-XX-U
1a	Wiper Blade (Tungsten Carbide)	ASG-URE-BLD-XX-C
2	Metal Outer Plate	ASG-UC-OUTR-PLT-XX
3	Metal Inner Plate	ASG-UC-INNR-PLT-XX
4	Mounting Tube	ASG-UC-MT-XX
5	Plate Arm	ASG-UC-PLT-ARM - 2 REQ.
6	Bushing Adjusting Angle	ASG-UC-ADJ-ANGLE - 2 REQ.
7	UHMW Tube Bushing	ASG-UC-TUBE-BUSH - 2 REQ.
8	Lock Collar	ASG-F1-LC - 2 REQ.

Key	Description	Part Numbers
9	Power Arm	ASG-UC-PWR-ARM - 2 REQ.
10	Bolt Up (Left Side)	ASG-NW3-BU-LHMB
10a	Bolt Up (Right Side)	ASG-NW3-BU-RHMB
11	Spring	ASG-UC-18-54-SPRING
12	Screw Hanger	ASG-UC-SCREW-HANGER
13	Spring Hanger Ext. Bracket	ASG-UC-EXT-BRKT - 2 REQ.
14	Hanger Brkt. Spring Plates (Left)	ASG-UC-SPRG-LPLT
14a	Hanger Brkt. Spring Plates (Right)	ASG-UC-SPRG-RPLT

XX - BELT WIDTH

OVERALL VIEW

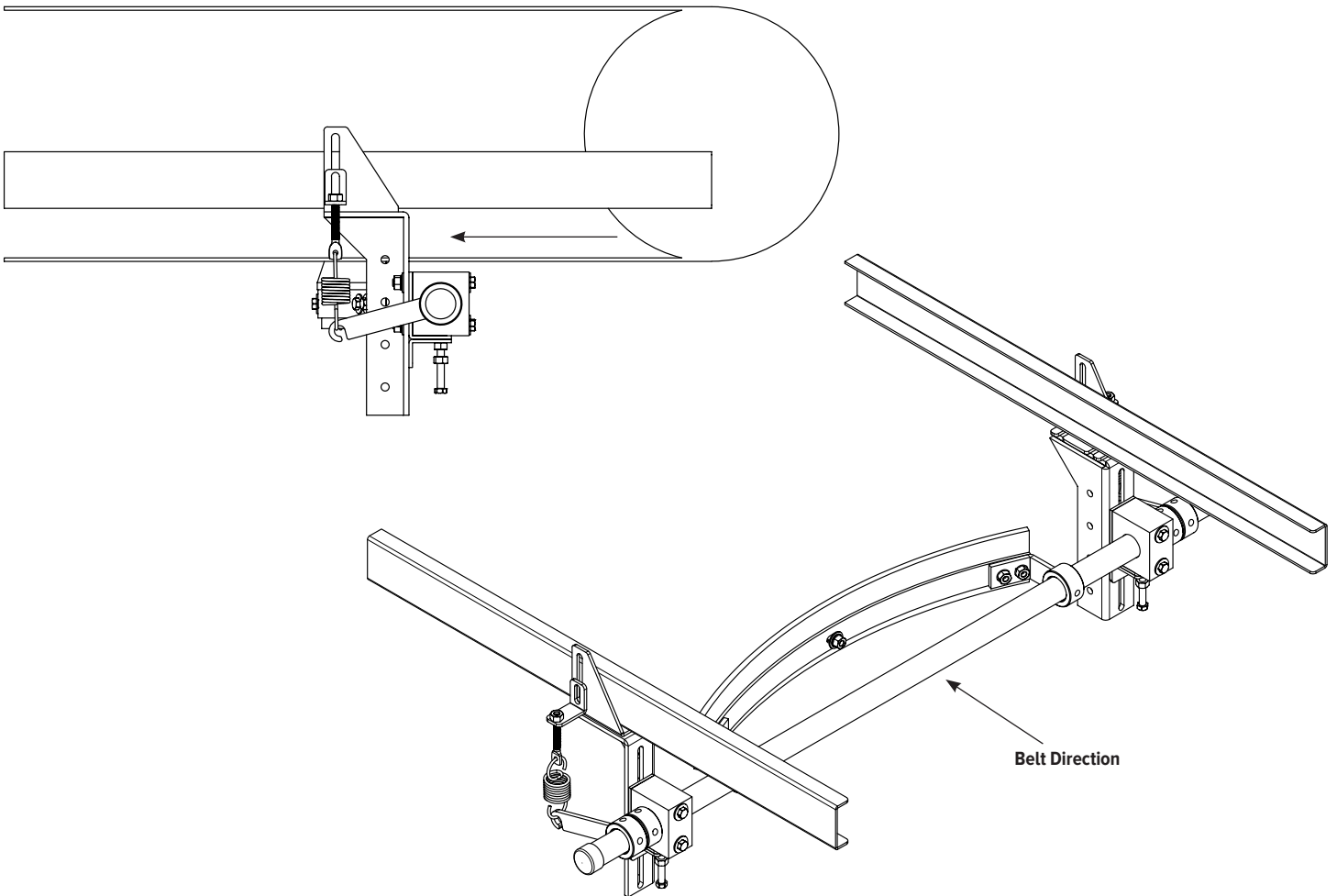
The U-Scrape is a Secondary Belt Cleaner designed to be installed on the return side of the belt. Identify and become familiar with all the parts. Ensure all parts have been included. If mounting structure is not available, additional steel may have to be added.

NOTE: Excess mounting tube may be trimmed after installation.

U-SCRAPE™ INSTALLATION

DETERMINE CLEANER LOCATION

The U-Scrape™ is a Secondary Cleaner and as such should be located on the return side of the belt after the belt leaves the head pulley as shown below. Preferably not much further from the confines of the head or dribbled chute.



MOUNTING BRACKET

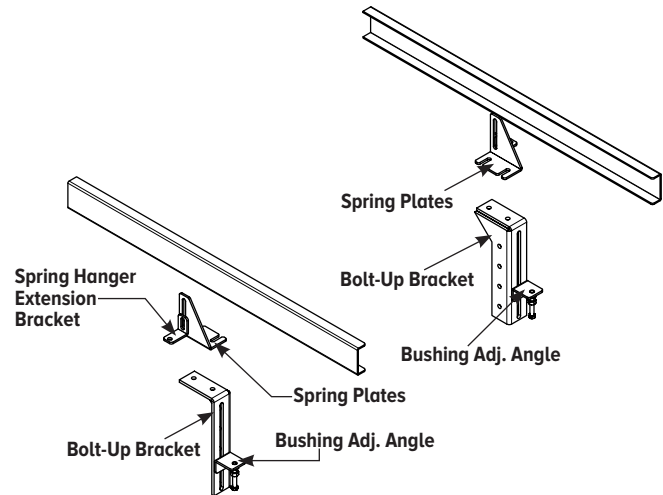
Determine the desired position of the mounting brackets. Attach the mounting brackets to the conveyor frame using the two holes on top of each mounting bracket.

PROCEDURE

Mount the bolt-up brackets first. The mounting holes need to accept 1/2" bolts. You can install the bolt-ups with the supplied hardware and leave the brackets hanging down just enough to install the spring plates. Then tighten the bolt-ups down.

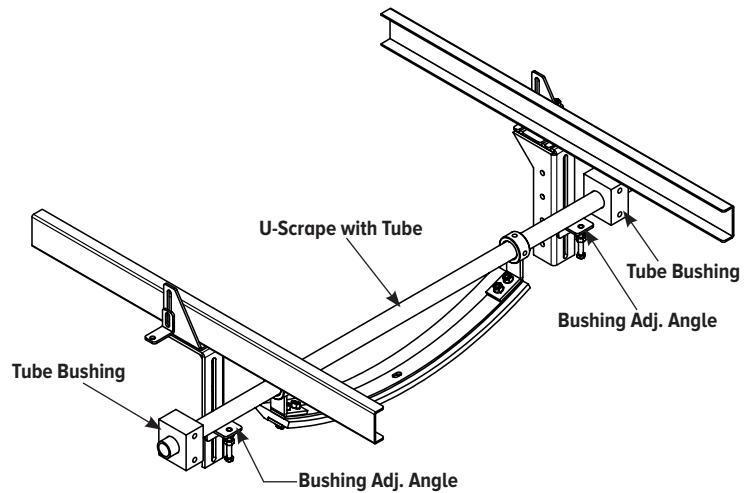
Step 1

Pre-assemble the spring hanger extension brackets to the spring plates, and the bushing adjusting brackets with supplied hardware before hanging the bolt-up brackets.



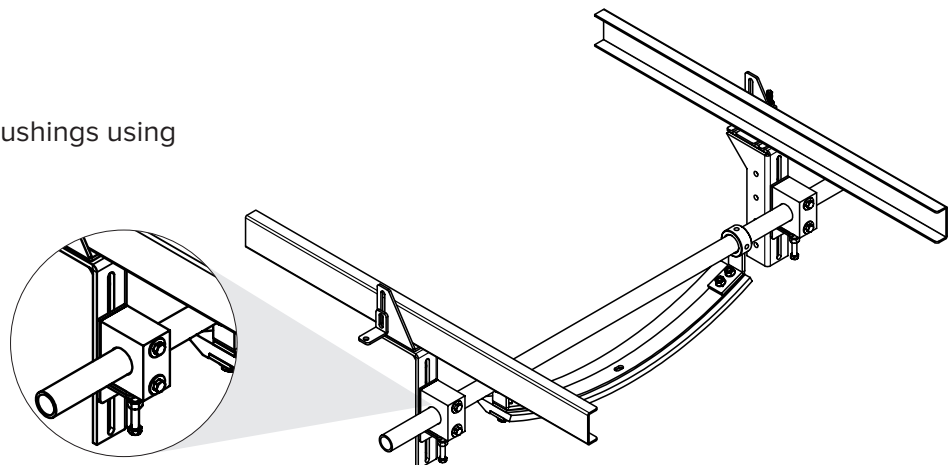
Step 2

Hang the U-Scrape with its tube on the bushing adjusting angles, and slide on the 2 each tube bushings.



Step 3

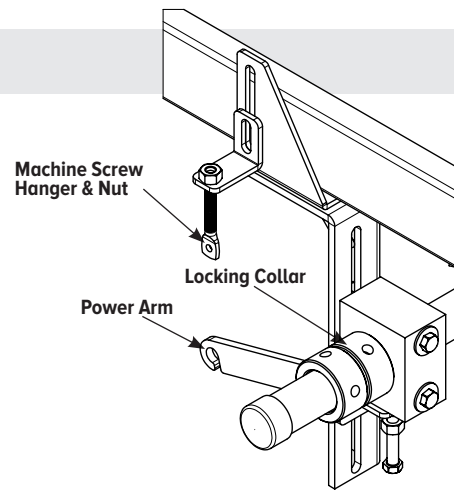
Next bolt into place the tube bushings using the supplied hardware.



U-SCRAPE™ INSTALLATION

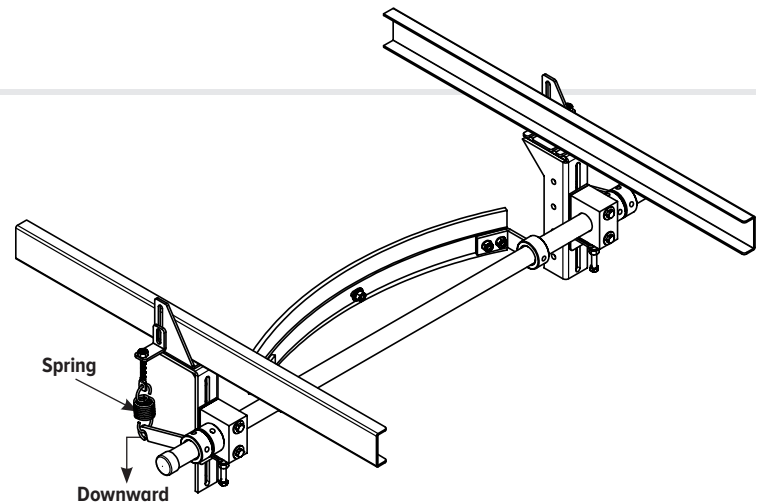
Step 4

Next insert the locking collar and the power arm, and the machine screw & nut. Put on the end caps, do this to both sides, tighten both lock collars only.



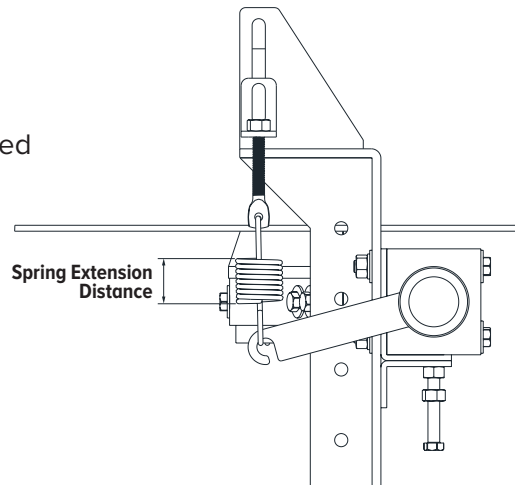
Step 5

With an extra hand, have someone push the U-Scrape cleaner up against the belt. Install both springs, move the power arms downward until there is some tension on the springs and tighten the set screws on the power arm.



Step 6

To properly tension the U-Scrape, adjust machine screw until each spring is extended the distance listed in the chart, based on your belt width.



Spring Extension Distance	
Belt Width	Distance
18	2-3/4"
24	2-15/16"
30	3-1/8"
36	3-3/8"
42	3-9/16"
48	3-7/8"
54	4-3/16"
60	4-9/16"
66	4-13/16"
72	4-15/16"

OPERATION

Additional adjustments will be made on the nut for the machine screw that is attached to the spring. If tube bushings are at the same location in relationship to the conveyor frame, both nuts need to be tightened equally for even tension.

Test run the belt to see how well the cleaner is functioning.

MAINTENANCE

After one day of operation

- Inspect the cleaner for proper belt cleaning and operation.

Weekly operation

- Frequent inspection is the key to proper belt cleaning and easy Scraper servicing. Weekly inspections are recommended, but actual service frequency may vary widely depending on various plant operating conditions.
- Wash the entire cleaner regularly to prevent excessive buildup. If material tends to accumulate on the Scraper Assembly then possible scraper relocation may be in order.
- Carefully inspect the wear tip of the cleaner blade. Make sure blade is not chipped or worn out. (Replace when necessary)
- Inspect the belt surfaces and edges for cracks, splits, tears, holes or any other worn or damaged condition occurring on the surfaces or edges of the belt itself. If necessary make repairs to the belt.

RE-TENSIONING OF U-SCRAPE™ CLEANER

- Upon wear, it will be necessary to tightened the spring up using the nuts on the machine screw.
- When running out of thread on the machine screw, you will need to adjust the cleaner upward using the bolt for the adjusting angle. Loosen the tube bushing bolts first to do this.
- There is even more upward adjust using the hanger extension bracket, or downward movement of the power arms.

TROUBLE SHOOTING

Problem	Solution
Excess vibration of the scraper.	Make certain all bolts are tight. Move the center line of the tube closer to the belt
Excess carryback.	Check for proper Scraper tension. Put additional tension on cleaner. Check for wear on the cleaning tip. Check thickness of carryback. If the cleaner must remove more than about 1/8" of material then an additional cleaner may be needed
Excess belt movement, cupping.	Install a hold down roller to stabilizer the belt surface.
Unable to tension scraper properly, belt moves away from blades.	Install a hold down roller to reduce sag of the belt when tensioning.
Frozen material on scraper.	Place heaters near scraper to melt frozen material. Or shut off the belt lock it out, test that the belt does not turn on, and chip debris off. <i>CAREFULLY . Use caution not to burn belt or cleaner.</i>