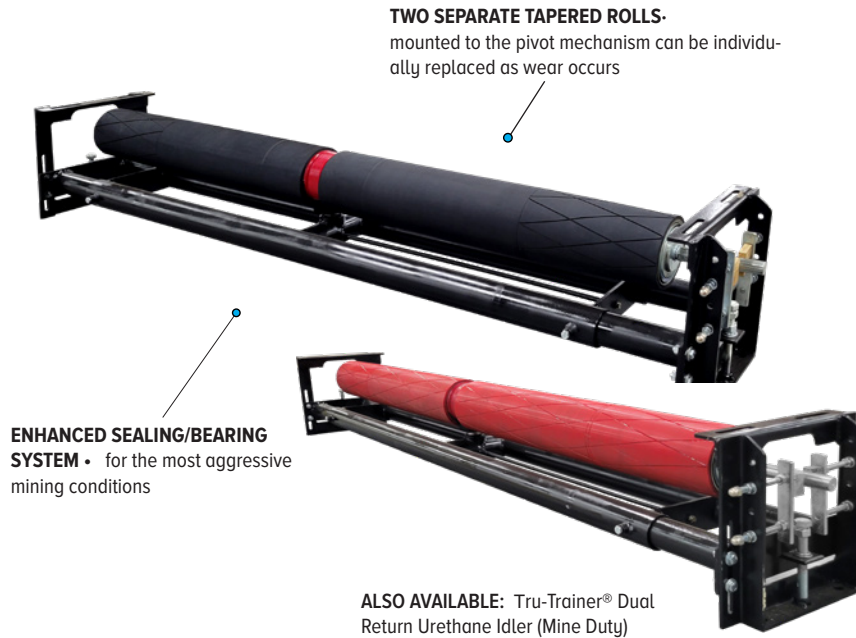


# TRU-TRAINER® DUAL RETURN IDLER

**ASGCO**  
Complete Conveyor Solutions

The **Tru-Trainer® Dual Return Idler** was developed to accommodate the excessive force encountered with wide belt and heavy loads. An external central pivot mechanism was designed, obviating the need for a single, large drum, and enabling a concentric and balanced rotation to be achieved.



## Features and Benefits

- **Two Separate Tapered Rolls** - are mounted into the pivot mechanism and can be individually replaced as wear occurs.
- **Designed for High Speed/PIW Conveyors** - to operate and last in severe conditions, wet and dry, and aggressive mining conditions.
- **Accommodates Excessive Force** - encountered with wide belts and heavy loads.
- **Enhanced Sealing/Bearing System** - needle thrust and tapered roller bearings and enhanced sealing system for the most aggressive mining conditions.
- **Individual Rollers for Easy Replacement** - separate tapered rolls are mounted onto the pivot mechanism, which can be individually replaced as wear occurs.
- **Available in Urethane (Mine Duty)** - Heavy duty rolls 3/4" polyurethane

**Need Solutions...to improve efficiency, safety and productivity? ask... ASGCO®**

www.asgco.com | 800.344.4000

@2023 ASGCO® "Complete Conveyor Solutions"

**ASGCO**  
Complete Conveyor Solutions

# TRU-TRAINER® DUAL RETURN IDLER

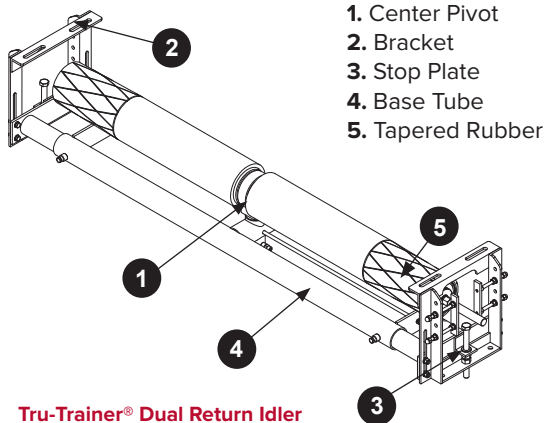
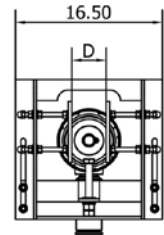
**Tru-Trainer® Dual Return Idler** has an external central pivot mechanism was designed, obviating the need for a single, large drum, and enabling a concentric and balanced rotation to be achieved. This results in extended bearing life and a very fast and effective conveyor tracking system.

## Available in Urethane

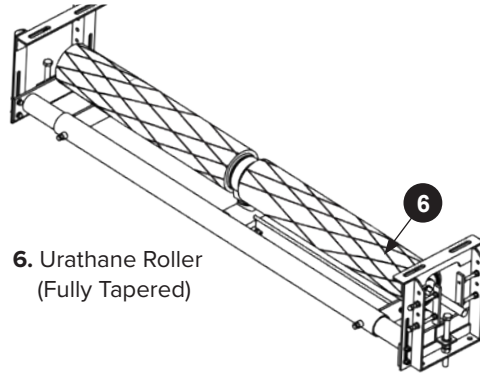
**Tru-Trainer® Dual Return Urethane Idler (Mine Duty)** was developed to accommodate the excessive forces encountered with wide belts and heavy loads.

### Tru-Trainer® Dual Return Idler & Dual Return Urethane Idler Installation Chart

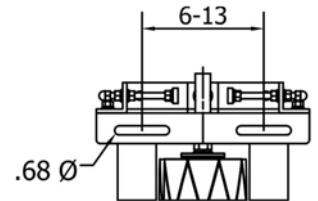
| Part Number       |                            | Belt Width | A Adjustable Min-Max | B     | C     | D    | E (Min-Max)  |
|-------------------|----------------------------|------------|----------------------|-------|-------|------|--------------|
| Dual Return Idler | Dual Return Urethane Idler |            |                      |       |       |      |              |
| ASG-TTDR-120-1    | ASG-TTDR-120-UE-1          | 48"        | 52.75-62.75          | 24.81 | 15.75 | 3.56 | (-1.75)-3.12 |
| ASG-TTDR-135-1    | ASG-TTDR-135-UE-1          | 54"        | 58.62-68.50          | 27.75 | 15.75 | 3.63 | (-1.75)-3.12 |
| ASG-TTDR-150-1    | ASG-TTDR-150-UE-1          | 60"        | 65.37-74.37          | 30.69 | 15.75 | 3.88 | (-1.75)-3.12 |
| ASG-TTDR-165-1    | ASG-TTDR-165-UE-1          | 66"        | 70.50-80.12          | 33.69 | 15.75 | 4.00 | (-1.75)-3.12 |
| ASG-TTDR-180-1    | ASG-TTDR-180-UE-1          | 72"        | 76.37-86.62          | 36.63 | 15.75 | 4.31 | (-1.75)-3.12 |
| ASG-TTDR-210-1    | ASG-TTDR-210-UE-1          | 84"        | 89-98.43             | 42.94 | 15.75 | 4.81 | (-1.75)-3.12 |



- 1. Center Pivot
- 2. Bracket
- 3. Stop Plate
- 4. Base Tube
- 5. Tapered Rubber



6. Urethane Roller (Fully Tapered)

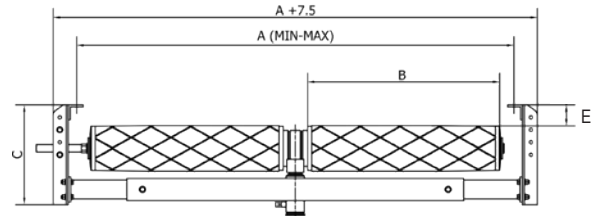
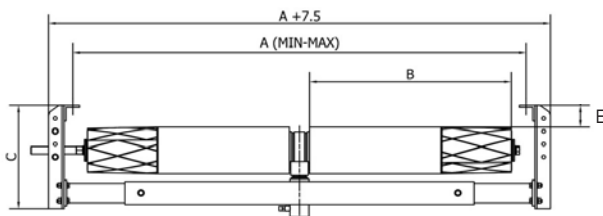


#### TRACKING ADJUSTMENT

Can be mounted on the topside or clean side of the conveyor belt.

Tru-Trainer® Dual Return Idler

Tru-Trainer® Dual Return Urethane Idler (Mine Duty)



| Tru-Trainer® Dual Return Idler |            |      |
|--------------------------------|------------|------|
| Part Number                    | Belt Width |      |
|                                | in         | mm   |
| ASG-TTDR-120-1                 | 48         | 1200 |
| ASG-TTDR-135-1                 | 54         | 1350 |
| ASG-TTDR-150-1                 | 60         | 1500 |
| ASG-TTDR-165-1                 | 66         | 1600 |
| ASG-TTDR-180-1                 | 72         | 1800 |
| ASG-TTDR-210-1                 | 84         | 2100 |

| Replacement Roller |            |      |
|--------------------|------------|------|
| Part Number        | Belt Width |      |
|                    | in         | mm   |
| ASG-TTDRIR-135     | 54         | 1350 |
| ASG-TTDRIR-150     | 60         | 1500 |
| ASG-TTDRIR-165     | 66         | 1600 |
| ASG-TTDRIR-180     | 72         | 1800 |
| ASG-TTDRIR-200     | 78         | 2000 |
| ASG-TTDRIR-210     | 84         | 2100 |
| ASG-TTDRIR-220     | 92         | 2300 |
| ASG-TTDRIR-240     | 96         | 2400 |

| Tru-Trainer® Dual Return Urethane Idler |            |      |
|---|------------|------|
| Part Number                             | Belt Width |      |
|   | in         | mm   |
| ASG-TTDR-120-UE-1                       | 48         | 1200 |
| ASG-TTDR-135-UE-1                       | 54         | 1350 |
| ASG-TTDR-150-UE-1                       | 60         | 1500 |
| ASG-TTDR-165-UE-1                       | 66         | 1600 |
| ASG-TTDR-180-UE-1                       | 72         | 1800 |
| ASG-TTDR-210-UE-1                       | 84         | 2100 |

| Replacement Urethane Roller |            |      |
|-----------------------------|------------|------|
| Part Number                 | Belt Width |      |
|                             | in         | mm   |
| ASG-TTDRIR-150-UE           | 60         | 1500 |
| ASG-TTDRIR-165-UE           | 66         | 1600 |
| ASG-TTDRIR-180-UE           | 72         | 1800 |
| ASG-TTDRIR-210-UE           | 84         | 2100 |
| ASG-TTDRIR-240-UE           | 96         | 2400 |

**Need Solutions...to improve efficiency, safety and productivity? ask... ASGCO®**

www.asgco.com | 800.344.4000

@2023 ASGCO® "Complete Conveyor Solutions"

