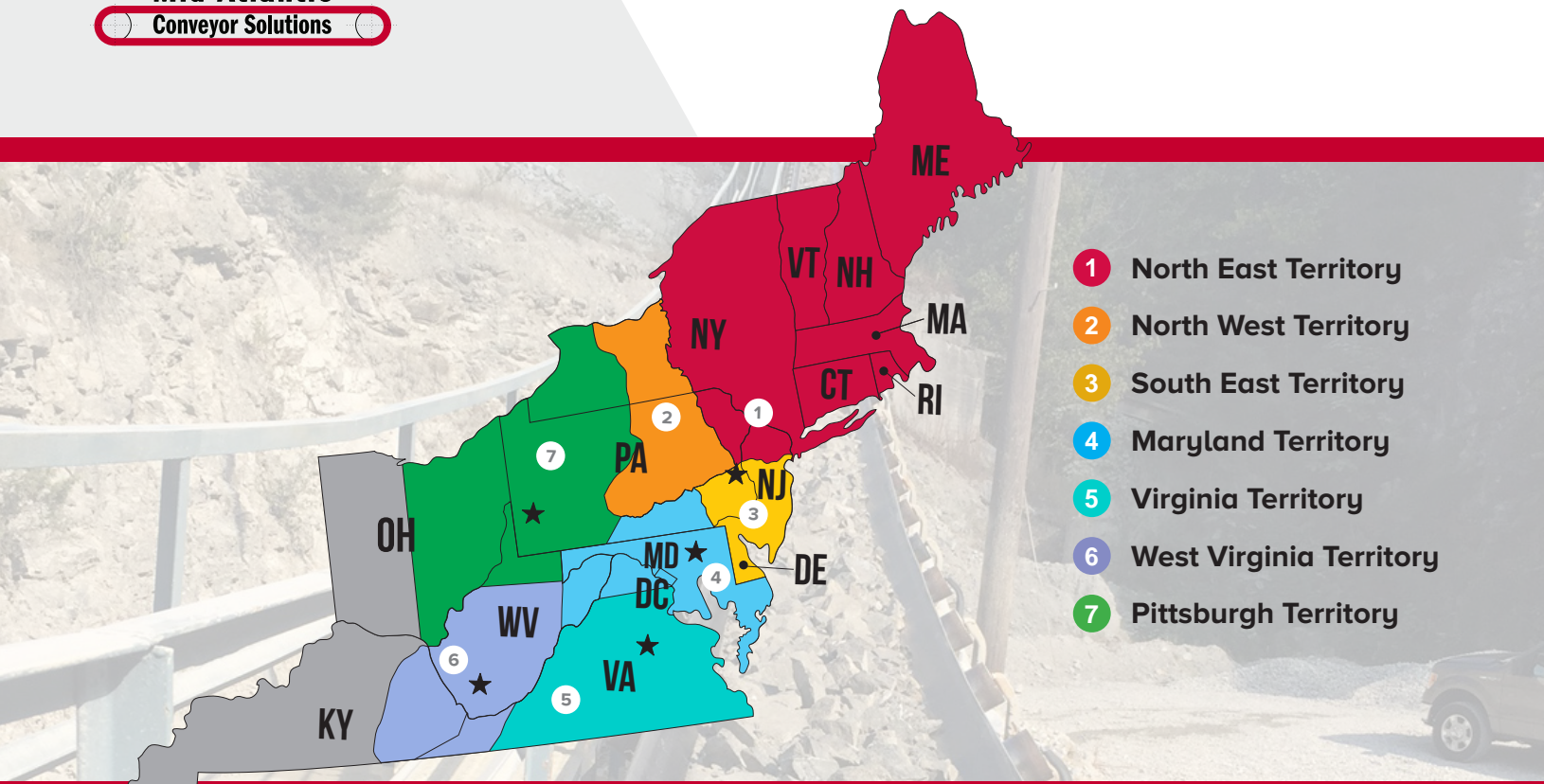


Conveyor Products and Equipment for Bulk Material Handling





- 1 North East Territory
- 2 North West Territory
- 3 South East Territory
- 4 Maryland Territory
- 5 Virginia Territory
- 6 West Virginia Territory
- 7 Pittsburgh Territory

Providing solutions for your conveyor issues is at our core. It's what drives everyone at ASGCO®, and the job is never done until our customer is satisfied.....**IT'S OUR GUARANTEE!**



MAXIMIZING EFFICIENCY

A HERITAGE OF INNOVATION

Since our founding in 1971 by Alfred S. Gibbs and his son Todd, ASGCO® has pioneered some of the most effective products in use for improving bulk material handling. We believe in taking care of the customer with great quality products and exceptional service. This has been a successful and standard policy at ASGCO® for many years and will continue in the future.



INCREASING PRODUCTIVITY

FOCUSED ON SOLUTIONS

At ASGCO® we continue to strive to make the handling of bulk materials cleaner, safer, and more productive. No matter what the basic assignment, we always seek out ways to increase production and to reduce operating costs. ASGCO® uses innovative products and engineered solutions to solve problems happening now and to prevent problems from happening in the future.



IMPROVING SAFETY

JUST ASK ASGCO!

What may seem like a problem to our customers is just a chance for us to put every resource we have in motion. And no matter what the basic assignment, we always seek out ways to increase production and to reduce operating costs. Our team is always ready. All you need to do is ask ASGCO®!

OUR PROMISE...

*Applies to every client, every time.
Always think and work in terms of solutions that are best for the customer in the long term.
Develop and sell products that satisfy the practical working needs of our customers.*

“Today, ASGCO® “Complete Conveyor Solutions” is recognized as the worldwide leader in bulk conveyor material handling systems.”

PROVIDING THE WORLD'S MATERIAL HANDLING INDUSTRY WITH

EFFICIENT, SAFE AND PRODUCTIVE COMPLETE CONVEYOR SOLUTIONS

Table of CONTENTS

CONVEYOR BELTING	1
BELT CONVEYOR IDLERS	3
TRACKING AND SPECIALTY IDLERS	4
CONVEYOR PULLEYS	5
SCREW AND BUCKET CONVEYORS	6
BEARINGS, GEAR BOXES AND POWER TRANSMISSION PRODUCTS	7
MOTORS	8
BELT CLEANERS	9
LOAD ZONE, SKIRTING AND DUST CONTROL	10
MECHANICAL FASTENERS	11
WEAR PARTS & CONVEYOR BELT REPAIR	13
VIBRATING FEEDERS	15
SCREENS	16

CONVEYOR BELTING

Quarry-Flex®
Quarry-Duty™
Super-K™ Heat Belt



HIGH PERFORMANCE BELTING FOR BULK MATERIAL HANDLING APPLICATIONS

ASGCO® stocks over 250,000 ft. of conveyor belting, offering the most complete conveyor product range in the market for aggregate quarries, cement, bulk shipping terminals, recycling, minerals, power and pulp and paper facilities.

ASGCO® is one of the largest stocking distributors of conveyor belt in the United States. We represent the highest quality conveyor belt manufacturers from around the world to assist our customers in helping make their plant/mine/facility become more efficient, safe and productive.



Quarry-Flex®



Quarry-Flex® conveyor belting is engineered to provide excellent rip, tear and impact resistance as seen in hard rock mining and recycling applications. The unique **straight-warp** carcass construction provides the impact resistance up to three times greater than conventional plied belting, while offering excellent troughability and tracking properties.

- High strength and minimal stretch or elongation
- Rip and tear resistance, 2-3 times that of conventional conveyor belting
- Provide the longest belt life

Quarry-Duty™



Quarry-Duty™ belt carcasses are distinguishable from the competition by their high adhesion, lower elongation and field performance. Our compounds have been engineered for higher abrasion resistance to protect the belt not only from wear and tear but as importantly the aging and flex properties, which actually determine the longevity of the belt.

- High abrasion resistance and low-stretch tension member
- Available in 2, 3 or 4 ply constructions
- Greatest adhesion between plies and covers
- Safety factor greater than 10:1

Super-K™ Heat Belt



Super-K™ Heat Belt is designed for high temperature applications as seen in the cement manufacturing process, refineries, ash handling, fertilizers and other demanding environment, high temperature applications.

- Single unit warp fabric, weaved with DuPont Kevlar® reinforcement
- Combination of high temp resistant EPDM (HT2™) cover compounds
- Rubber covers withstanding elevated temperatures of +700°F
- Longer resistance to cracking and hardening

Steel-Flex™



Steel-Flex™ conveyor belting steel cord conveyor belts are suitable for high strength, long distance, and heavy load transportation of materials, which are widely used in coal mines, hard rock mining, bulk shipping terminals / port facilities, coal-fired power plants and mineral mining.

- High Tension conveyors
- Overhaul conveyors

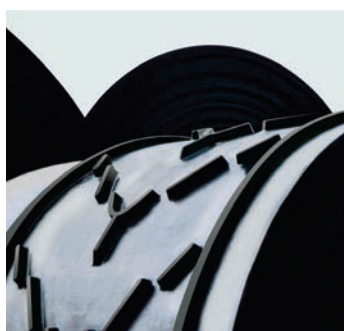
Mine-Plus™



Mine-Plus™ is constructed for above ground coal handling in power generation and coal preparation plants where leaching agents and dust suppressants can be major influences on belt deterioration.

- Excellent abrasion and cover wear properties
- Available in 4 carcass constructions: Standard Plyed, Heavy-Duty Straightwarp, Kev-Flex and Steel-Flex.
- Fabric carcasses from 330 to 1500 PIW
- Low rolling resistance bottom covers also available

Chevron and Steep-Angle Conveyor Belting



CHEVRON belts are equipped with covers of a tried-and-tested, wear-resistant quality. With 10-50 mm high profiles, they are the perfect belt for numerous applications.

- Wear-resistant cover with profiles vulcanized
- Flexible profile compounds for up to 50 mm
- Can be used efficiently with small pulley diameters
- Reduction of dirt caking
- Special types are available for conveying hot goods, for goods containing oil and grease and for steep-incline conveying applications.

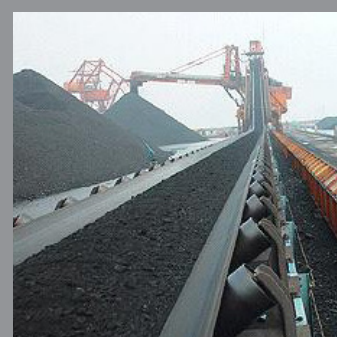
MOR Oil Resistant Compounds



Moderate Oil Resistance (MOR) is engineered to resist cover swell due to oil exposure. MOR is ideally suited to handling waste products, sludge, sewage, wood products and other moderately oily materials.

- Excellent oil resistance to reduce cracking and aging
- Available in either standard ply or straight warp carcasses

Steel-Flex™
Mine-Plus™
Chevron
MOR



CONVEYOR IDLERS

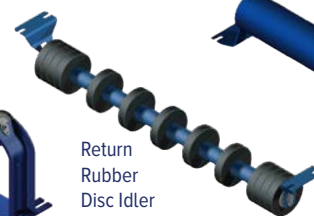
Syntron® Idlers
Martin® Idlers
Superior® Idlers



Martin

IDLERS

Robust Idler frame construction and sealed-for life Idlers make a difference in the toughest belt conveyor applications.



Martin manufactures heavy duty Idlers and components that exceed CEMA standards. Heavy duty construction and triple labyrinth seals allow for trouble-free part life in the harshest of applications. With Idlers available when and where you need them, Martin can provide the complete solution for your belt conveyor needs.

Syntron®

Material Handling Solutions

TOUGH CONSTRUCTION FOR TOUGH APPLICATIONS

For over 100 years, Link-Belt has designed and manufactured belt conveyor parts including conveyor idlers (rollers) and components that set the standard of excellence for bulk material handling throughout the world. Quality products, prompt shipment and after-sales service are Syntron® Material Handling trademarks.

By combining the strengths, capabilities and expertise we are able to offer the broadest selection of material handling solutions available anywhere. Our brands, Syntron® and Link-Belt®, are recognized around the world for their exceptional performance and value in material handling and vibratory feeding equipment.

We offer a full line of conveyor idlers (rollers) products, ranging from 14" to 120" in belt widths, that meet or exceed CEMA B, C, D, E and F specifications.

All Syntron® idlers conform with OSHA operational safety standards.



SUPERIOR



High Quality Construction

- Thick steel construction compared to other brands
- Two year complete components warranty
- Largest, broadest range of all CEMA categories on the market

SpinGuard® Seal Technology

- Contact seal prevents foreign material from entering seal cavity
- Grease-filled triple labyrinth seal shuts out contaminants
- Stationary external seal prevents material pinch points

Quick Reaction

- One to two day turnarounds on custom designs

Economical Retrofit Rolls

Slotted shafts fit most competitor frames
Hex nut adapter available for hex nut style brackets

No Maintenance Base Frame

Angled base sheds material
Flared, non-clogging center stands
No material pinch points between roll and frame



MOST RELIABLE AND REACTIVE BELT TRACKING IDLERS

Tru-Trainer® Tracking Idlers

The Tru-Trainer® conveyor belt tracker employs a unique and highly effective tracking action, which is non-damaging to the belt and reacts immediately if the conveyor belt begins to drift off center.

Our line of Tru-Trainer® conveyor belt trackers don't rely on contact with the belt edge in order to guide it. This means that conveyor belt edge damage, which occurs frequently with other tracking systems, is avoided. The center pivot is unique and simple, consisting of a stainless steel pin within a solid steel center shaft.



Tru-Trainer® Flat Return Idler – reacts as the belt tracker moves off center it will contact the tapered section of the roller on that side of the conveyor belt.



Tru-Trainer® Tapered Troughing Idler – offers the ultimate in tracking performance on the load-carrying side and is the result of over 10 years of design and innovation.

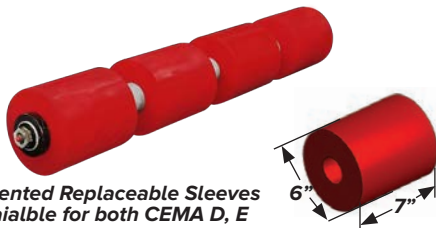
Features and Benefits:

- Continuous Alignment reduces edge damage
- Heavy-Duty Patented Design
- Reactionary in both wet and dry conditions
- Total Satisfaction Guarantee (TSG)
- Polyurethane lagged rollers are also available.
- Excellent for Reversing Belt Applications.



Tru-Trainer® Dual Return Urethane or Rubber and Dual V-Return Urethane or Rubber Idlers – developed to accommodate excessive forces encountered with wide conveyor belts and heavy loads. Fast and effective.

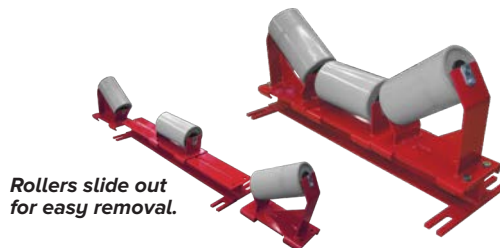
Dura-Sleeve™ Return Idlers



Patented Replaceable Sleeves Available for both CEMA D, E and F idlers

Dura-Sleeve™ – Return idlers are a patented abrasion resistant urethane sleeve that is easily clamped on any existing or new rubber or urethane disc return idler shaft.

Slide-lers™



Rollers slide out for easy removal.

Slide-lers™ – Give you the ability to change rolls under the conveyor loading skirt area without having to remove adjacent belt idlers.

Tru-Trainer® Belt Tracking Idlers Slide-lers™ Dura-Sleeve™



CONVEYOR PULLEYS

Drum Pulleys
Wing Pulleys
Pulley Lagging
Take-ups



ASGCO® distributes heavy duty conveyor pulleys, including drum pulleys, wing pulleys, turbine pulleys, engineered pulleys, and special construction pulleys. ASGCO® partners with the best manufacturers in the industry to meet the demanding requirements of industries, such as sand and gravel pits, quarries, coal mines, unit packaging, food processing, and recycling.



Martin's heavy-duty conveyor pulley product line meets the demanding requirements of industries such as: sand and gravel quarries, coal mines, unit packaging, food processing, and recycling. These pulleys are manufactured to offer maximum protection against premature failure in harsh applications.



Profiled End Disc Drum Pulley

Martin profiled end disc pulleys are engineered to offer an efficient and improved alternative to standard stock drum pulleys.



Clean Flight Wing Pulleys

Dodge wing pulleys deliver great performance and are available from stock in many common sizes. Dodge wing pulleys meet or exceed CEMA application standards for use.

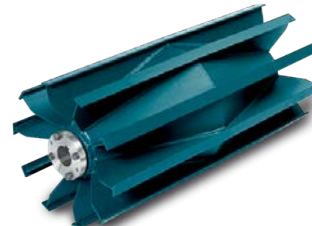


Dodge offers a variety of pulley types, styles, and different options—from CEMA (Conveyor Equipment Manufacturers Association) standard to large, highly engineered pulleys—in addition, to complete pulley assembly packages made from the best components in the business.



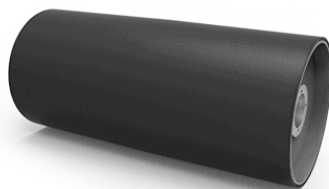
Drum Pulleys

Dodge heavy duty and mine duty extra (MDX) drum pulleys deliver high performance. Available from stock in common sizes or custom-made.



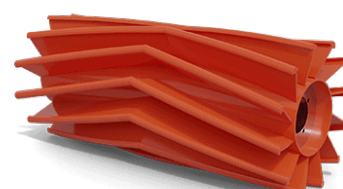
Wing Pulleys

Dodge wing pulleys deliver great performance and are available from stock in many common sizes. Dodge wing pulleys meet or exceed CEMA application standards for use.



Drum Pulleys

Drum pulleys serve in a variety of roles or positions, including drive, tail, bend tensioning, snub tensioning and/or take-up pulleys.



Wing Pulleys

Superior was first to introduce the v-shaped wing pulley and quickly after, the Chevron® Pulley became the standard for wing pulleys.

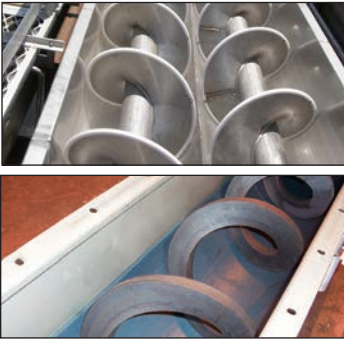
Martin



Martin & KWS offer a complete line of material handling solutions available to the marketplace. Their conveyor products are designed to efficiently handle most varieties of dry, free-flowing bulk materials. We offer a variety of configurations to efficiently handle most any material handling need.

- Screw Conveyors
- Shaftless Screw Conveyors
- Bucket Elevators
- Vertical Screw Elevators
- Drag Conveyors
- Modular Plastic Conveyor Screws
- General Material Handling

Screw Conveyors



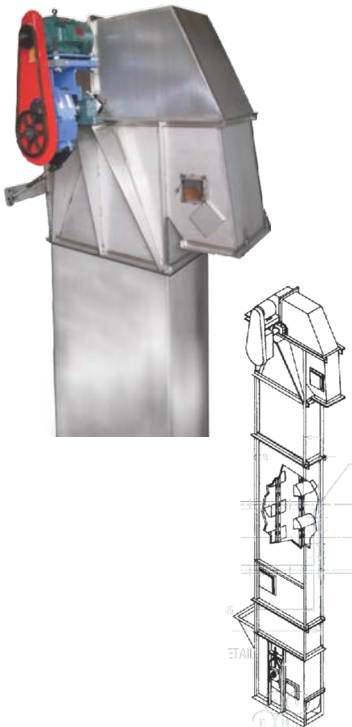
Single and Double Screw conveyors are commonly used to transfer bulk material solids. However, a screw may also be used to heat or cool a product as it is being conveyed.

We can help size and select the conveyor that meets your needs.

A conveyor screw is either right hand or left hand depending on the form of the helix. The hand of the screw is easily determined by looking at the end of the screw.

Right and Left Hand Screws are available.

Bucket Elevators



Martin & KWS manufacture and stock Bucket Elevators in a variety of styles and configurations. Bucket elevators are used in many industries with material including, soaps, ceramics, carbon black, fiberglass, metal powder, fertilizer, grain, sugar, flour, salt and much more.

Centrifugal Discharge Elevators – Offered in chain or belt type design and will handle a variety of free-flowing dry materials with small to medium lump size.

Super Capacity – Continuous Discharge Elevators, offered in chain type design with buckets mounted between two chain rows and will handle higher capacities of free flowing, extremely abrasive materials.

High - Speed Grain Centrifugal Elevators – Offered as a belt design of either double or single leg construction. Designed to economically handle free flowing grain type products.

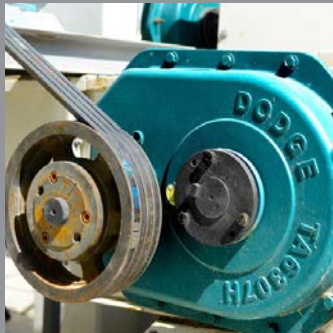
Continuous Discharge Elevators – Offered in chain or belt type design and will handle a variety of free-flowing dry and sluggish, extremely abrasive materials with medium to large lump size.

Mill Duty - Centrifugal Discharge Elevators – This heavy duty construction style for severe environments is offered in chain or belt type design including double row bucket design made to handle a variety of free-flowing dry materials with small to medium lump size.

Screw Conveyors Bucket Elevators



Mounted Bearings Gearing Roller Bearings



Dodge® power transmission products offer reliable service and low maintenance to help reduce your total cost of ownership. Our innovative bearings, gearing and power transmission products have solved the toughest applications for over 130 years our technical sales team can help you with the most challenging applications, and our world-wide distributor network ensures immediate delivery.

Mounted Bearings

- Mounted Ball Bearings
- Mounted Tapered Roller Bearings
- Mounted Spherical Roller Bearings
- Mounted Plain Bearings
- Hydrodynamic Bearings
- Take-Up Frames

Gearing

- TORQUE-ARM® Shaft Mount Reducers
- TORQUE-ARM II™ Shaft Mount Reducers
- TORQUE-ARM II Motorized Shaft Mount Reducers
- TIGEAR-2® Speed Reducers
- QUANTIS® Reducers & Gearmotors
- MAXUM® XTR Concentric Speed Reducers
- CST® (Controlled Start Transmissions)
- MAGNAGEAR XTR™

System-1

- Integrated solution for multiple-product power transmission projects
- Complete package of optimized, performance-matched Baldor-Reliance and Baldor-Dodge products
- Single point of contact for project management
- Total-package shipping under one part number
- Pre-Engineered Drive Packages



MOUNTING BEARING



GEARING



SYSTEM-1

TIMKEN

When your equipment faces harsh environments, you need roller bearing housed units rugged enough to outlast tough conditions and deliver exceptional performance.

Timken® Spherical Roller Bearing Solid-Block Housed Units multiply protection with primary and secondary seal options, as well as steel covers in size to fit all Timken® solid-block house units. The space between the primary and secondary seal offers a fail-safe grease cavity for more protection. Increase performance and durability / Decrease overall cost of ownership



LOCK



FOUR-BOLT PILLOW BLOCK



FLANGE BLOCK



PILOTED-FLANGE CARTRIDGE



TAKE-UP BLOCK



CARTRIDGE BLOCK



Sumitomo Drive Technologies has been trusted for over 130 years to provide quality products and innovative solutions to help our customers solve their complex challenges. This rich history has made us a leading manufacturer of gearboxes, gearmotors, speed reducers, inverters, and control products in a wide variety of applications.

Gearboxes, Speed Reducers & Inverters for ANY Application



Bevel BuddyBox® 4 Gearmotor



Cyclo® Drive Gearmotor



Cyclo® Drive Gearmotor



Our induction, wound rotor and synchronous motors, process and intelligent controls and motor controls deliver the performance that's expected within the smallest package possible.



HVAC Single Phase TEFC



HB0104 Three Phase TEFC



MAX-E2/841 "Lite"



Whether it's a motor for harsh, outdoor conditions at a plant, or for continuous duty in a distribution center, customers have a variety of choices. ABB's Baldor-Reliance® motors are designed to operate reliably no matter how challenging the process or application, and to have low life cycle costs.



Three Phase Enclosed Motors

The Baldor-Reliance extensive line of General Purpose three phase motors are available in totally enclosed cast iron and industrial steel band for harsh applications. Designed for "general purpose" use means that these motors can be used in many applications.



Single Phase Enclosed Motors

Baldor offers an extensive line of General Purpose single phase enclosed motors. In applications where only single phase power is utilized, these motors are available from 1/12 Hp through 15 Hp in TEFC designs.

Motors Gearmotors



BELT CLEANERS

Primary Belt Cleaners

Secondary Belt Cleaners



The importance of Belt Cleaners

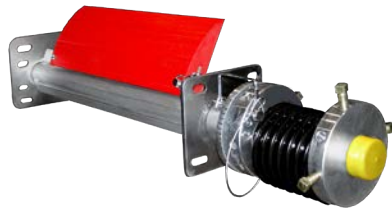
At ASGCO® we recognize that conveyors are the product lifelines to any plant. It is important that all conveyor systems run efficiently in moving your products from one production unit to the next without failure or any unscheduled downtime.

Our Primary Belt Cleaners are now bigger, stronger and more durable.

Primary Belt Cleaners



Skalper® with E-Z Torque® – Simple and highly effective belt cleaning system for every application.



Pit-Skalper® – Highly effective in challenging service conditions to remove carry-back from the conveyor system.



Super-Skalper® HD – The massive blade tackles the toughest bulk material handling applications.

Carry-back can lead to:

- Excessive buildup and wear on conveyor belt idlers and pulleys.
- Conveyor belt misalignment due to the artificial crown created by the carry back.
- Negative and unsafe work environment.

Secondary Belt Cleaners



Razor-Back™ – Tough self-adjusting replaceable tungsten carbide blades (non-carbide also available) for extremely effective belt cleaning.



TORO™ – Effective, flexible solution that is also suitable for reversing conveyor belts.



V-Plow XD™ – Designed for the toughest mining environments to reduce build-up on the tail and take-up pulleys and reduce belt edge damage.





Conveyor Load Zone Support

ASGCO®'s decades of load zone support is utilized in developing world class conveyor transfer point products such as our line of Impact Beds and Pro-Zone™ that help:

- Absorbs Impact and Can Really Take the Shock of Large Material
- Available in Either Standard or Mine Duty



Impact Cradle Beds™ – (patent pending) is designed to provide protection to your conveyor belt from impact damage from large rocks, tramp metal, roof bolts or bucket teeth that can put a stop to operations.



Roller Cassette™ – Incorporates the advantages of slider and impact bars for sealing, while maintaining constant rolling support for the conveyor belt in the load zone.



Pro-Zone™ – A patent pending modular conveyor belt load-zone system that optimizes the sealing for air/dust tightness of the receiving conveyor belt.

Conveyor Skirting and Dust Control

ASGCO®'s Skirt Sealing Systems and dust control products eliminate spillage, dust and fines at transfer points on the conveyor system. Provides Highly Reliable, Positive Seal in the Conveyor Load Zone.

- Slashes Clean-up Costs
- Improves Conveyor Safety
- Reduces Damage to Conveyor Belt and Components



Razor-Back™ – Tough self-adjusting replaceable tungsten carbide blades (non-carbide also available) for extremely effective belt cleaning.



Clamp-Mount MDX™ (Mine Duty) – Helps to eliminate spillage and dust in the conveyor transfer point. MDX™ installs easily and allows one person to replace or reposition skirt rubber.

Tri-Seal™, Multi-Seal™, Dura-Seal™ (ORG), B&R Dura Seal™, and SX3™ Skirtboard Sealing Compounds



Multi-Seal™ Skirting



Dura-Seal™(ORG) Compound

Our adjustable skirtboard sealing compounds stop fines and dust from escaping the load zone. They work great in above and below ground mining.

Clamp-Mount®
Skirtboard Sealing
Impact Beds
Pro-Zone™



MECHANICAL FASTENERS

Grizzly™ Screw Splice



The Grizzly™ Screw-Splice conveyor belt splicing and fastening system delivers power, strength, and flexibility in every application. It is the perfect fastener to save you time and money while allowing a quick, accurate, and easy installation. ASGCO®'s Grizzly™ Screw-Splice outperforms competitor's products by offering more tensile strength and durability.

Features & Benefits

- Quick installation
- Expensive equipment not required
- No drilling and no template
- Wear-resistant and cut-resistant
- High tensile strength
- Available per inch or in complete roll length
- Splice Types **63 / 65 • 80 / 85 • 100 • 180**
- Available in Stainless Steel



Available Rubber Compound Types

Abrasion Resistant

Our standard highly abrasion resistant rubber compound used in quarries, mining, recycling and other high impact and abrasion applications.

AR

Heat Resistant

High temperature, 400°F (204°C) rubber compound used in cement plants, foundries, chemical processing and other high temperature applications.

HTR

Low Temperature

Our low temperature resistant rubber compound is ideal for conveying bulk material at -20°F (-28°C).

LT

Bare Back

Low friction fabric backed with rubber top cover suitable for steel or low friction slider bed applications.

BB

Ready to Install

The Grizzly™ Screw-Splice is pre-assembled with the spacers installed, so that the top cover and the bottom cover holes lineup. The Grizzly™ Screw-Splice is delivered with the appropriate number of screws and PZ bits to install the screw splice (matched by inches ordered). It is available in any length between 12 inches up to the length of a roll.





Bolt Solid Plate Fastener System

1. Sift-free splice
2. Non-magnetic and rubber covered options
3. On-site installation with portable hand and power tools
4. Low cost, long life splice



Bolt Hinged Fastener System

1. For belts with frequent belt-length alterations or smaller pulleys
2. Easy to install and re-install
3. Non-magnetic and spark-free options



Rivet Hinged Fastener System

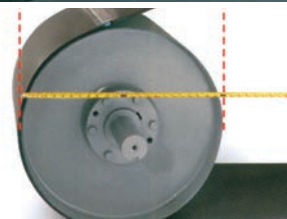
1. Low-profile, belt cleaner compatible
2. Quick installation, minimal downtime
3. Power installation options
4. Maximum resistance to pull-out

Mechanical belt fasteners combine surprising strength and durability with affordability and easy installation. That makes them a smart option when your priority is saving time and money.

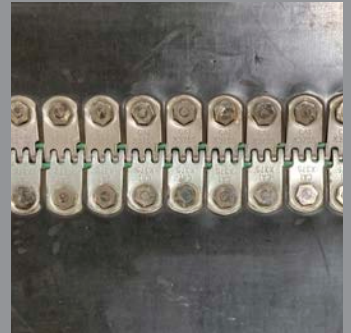
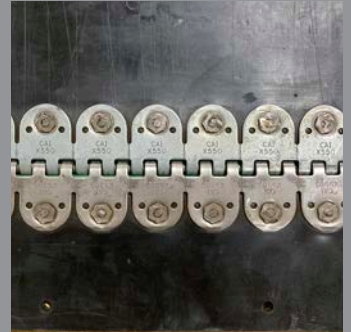
ASGCO®'s service team has the capability of installing Conveyor Accessories fasteners to quickly repair your conveyor belt, reducing costly downtime and increasing productivity.

How to specify the right fastener:

- 1. Determine belt tension** - Most conveyor belting has a mechanical fastener rating. Care should be taken not to operate the belting or fasteners beyond their recommended ratings.
- 2. Measure belt thickness** - If fasteners are to be countersunk, measure the belt thickness after a portion of the belt cover has been removed. Choose a fastener size which corresponds to belt thickness.
- 3. Measure the diameter of the smallest pulley in your drive** - For tail or take-up of the self-cleaning "wing" type pulley, 25% larger diameter dimensions are generally required. Only consider pulleys over which the belt makes at least a 90° wrap.
- 4. Choose the fastener size that is appropriate for your specifications** - Consult individual Conveyor Accessories catalogs to guide your selection.
- 5. Hinged or solid plate?** - When either style is appropriate, solid plate styles are preferred for longer life and to prevent sifting. Hinged fasteners are preferred on portable conveyors with smaller pulley diameters.

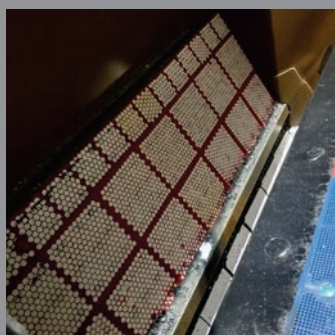
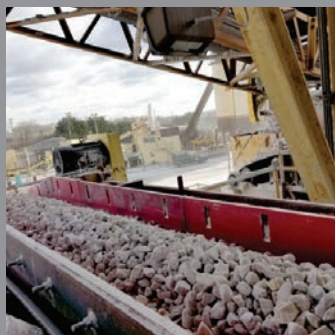


Bolt Hinged Splice
Solid Plate Splice
Rivet Hinged Splice



WEAR PARTS

Armorite® X-Wear™ Ceramic Liners Canoe Liners Urethane Cast Products



Wear Liners

Wear Liners are designed to be an integral part of any bulk handling conveyor system.

ASGCO® manufactures a variety of conveyor wear liners with many options and sizes to choose from. Designed to handle any tough hard rock mining application. Abrasion resistant, modular, high-wear material to line belts, chutes, and bin impact areas; ASGCO® wear liner products are the longest lasting, most cost effective in the industry.

Available in ½", 1" or 2" ceramic.



Available in 6" or 12" urethane.

X-Wear™ (Ceramic) - Smooth laminate surface provides optimum sliding for bulk material handling.

X-Wear™ Urethane Magnetic Liners - We manufacture magnetic Urethane cast products as per customer requirement under strict confidentiality agreements with our customers, respecting any and all patents on the products they have designed and given us the opportunity to manufacture.

Nitronic SX™ Stainless Steel - is a nitrogen-strengthened stainless steel developed for applications requiring good level corrosion resistance and durability.



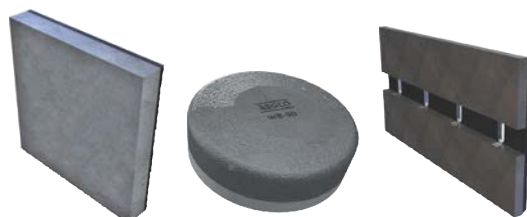
Skirtboard Wear Liners (Urethane, Steel, Rubber, Ceramic)

Wear Liners protect your skirtboard and extend the life and effectiveness of your sealing compound. Use the straight design where belts are fully loaded and full chute width needs to be maintained. The angled deflector plate wear liner will force larger material to the center of the belt.

Our Urethane Canoe Liners are engineered to absorb impact and abrasion in all types of material transfer operations. ASGCO® Ceramic Canoe Skirt Liners are highly effective for sealing inside the skirtboard, controls the material until it becomes stable and protecting the skirt wall from wearing.

Armorite®

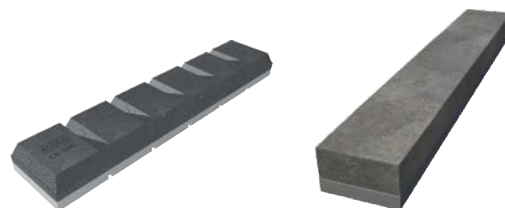
ASGCO® Armorite® is both impact and abrasion resistant and is made from a combination of high chromium and molybdenum white iron metallurgically bonded to a mild steel plate.



Smooth Liners

Wear Buttons

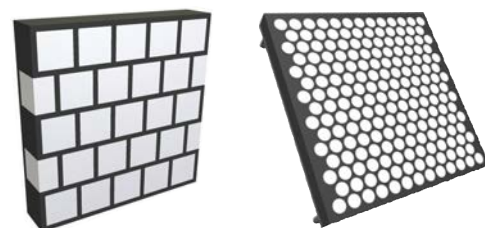
Skirtboard Liners



Chocky Bars

Grizzly Screen Caps & Wear Bars

X-Wear™ Mine Duty - Built with extreme hard ceramics that provide unsurpassed resistance to abrasive wear.



Square 2" Ceramic

Round ¾" Ceramic



Urethane Canoe Liners

Available in 1", 2" and 3" thicknesses 9" wide x 48" long



Ceramic Canoe Liners Available in 1" thick 24" Width 1" thick 36" width



Fourthane® is an easy to apply synthetic rubber with high tear and impact resistance. Fourthane® allows you to repair rubber conveyor belt covers that cure enough within one hour so the equipment operation can be resumed, reducing down time and maximizing the equipment operational time.

Specially formulated to be applied on conveyor belts that work under high impact and abrasion.

FOURTHANE® is a liquid material designed to be applied with a spatula or a similar tool. After a relatively short period of curing time it achieves physical properties similar to the conveyor belt's rubber cover.

FOURTHANE® product is provided in a kit of 26.5 Ounces (750 grams), which includes the synthetic rubber and catalyst. With the proper primer, the product can also be applied to non rubber surfaces such as steel, concrete, wood, etc.

TYPICAL APPLICATIONS:

- Restore belt covers worn from skirtboard contact
- Restore belt covers on feeder belts
- Patch impact damaged areas of feeder belt covers
- Repair of longitudinal cuts in steel cord and fabric belts
- Refurbish damaged belt splice areas
- Renovate rip detection antenna installation areas

The best and fastest system in the world for belt conveyor repair.



Each Kit includes:

- **FOURTHANE®** resin
- **Cleaning Agent**
- **Primer**
- **Catalyzer**
- **Brush**
- **Latex Gloves**

Productivity

After applied, it only requires 10 minutes to dry and 1 hour to setup, minimizing down time, accomplishing time and money saving.

Easy Application

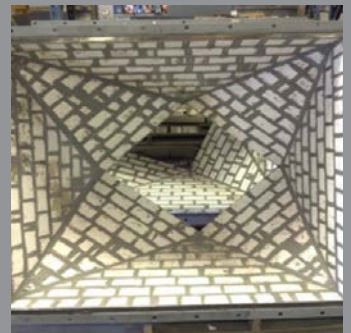
Specially formulated to be used in the field with very few tools and personnel.

High Tear and Impact Resistance

The high tear and impact resistance of the **FOURTHANE® Red Line**, allows the users to repair rubber coatings and conveyor belt covers of heavy demand, such as feeder belts.

Conveyor Belt Repair System

Durafrax® 2000



Saint-Gobain specializes in providing wear solutions that can extend the life of your equipment and keep your systems at maximum operational levels. Their industrial workhorse (and most frequently specified wear material) is Durafrax® 2000, a custom-designed alumina ceramic. Durafrax® 2000 is a 90% fine-grain, high grade alumina made from exceptionally pure, uniformly controlled aluminum oxide. It is engineered to be one of the best wear materials available for fine particle abrasion.



DURAFRAX® 2000

Ultra fine-grain, sintered high grade pressed alumina for various types of abrasion.

- Versatile material suitable for a range of applications
- Most cost effective wear resistant material
- FDA approved for grain & food processing

VIBRATING FEEDERS

Syntron® F-Series
Syntron® MF
Electromechanical

Syntron®

Material Handling Solutions



Syntron® Heavy-Duty Vibrating Feeders

Syntron® Vibrating Feeders for heavy industry are ideal for feeding a wide variety of bulk materials from storage piles, hoppers, bins and silos. Rugged and dependable, Syntron® heavy-duty feeders are backed by years of service with proven performance in the mining, aggregates, glass, cement, chemical, wood products and steel industries.



Syntron® Heavy-Duty Electromagnetic Feeders



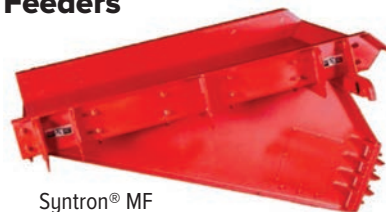
Syntron® F-Series

Syntron® Heavy-Duty Electromagnetic Feeders are the most recognized name in the industry. With models having capacities ranging from 25 to 1,600 tons per hour, these feeders are capable of handling a variety of materials from fine powder to large, coarse particles.

Performance Feeder Feature

- Dust-tight and maintenance-free drive units:
- Feeders have no mechanical parts to wear out, such as cams, eccentrics, belts and bearings - thus eliminating the need for lubrication.
- Stroke generated by electromagnetic field produced by coil.
- High Frequency: 3600 VPM at 60 Hz or 50 Hz with EVF Control for maximum feed rate.
- Stroke - .080 inches: New "HP" units operate at .080" at 3600 VPM to provide 40% more output than traditional units at .060"

Syntron® Heavy-Duty Electromechanical Feeders



The high-capacity performers

Syntron® MF

Syntron® MF Heavy-Duty Electromechanical Feeders are the heavy-weights of bulk material handling and are used for higher capacity requirements. The ten heavy-duty models handle capacities from 600 to 4,000 tons per hour.* Syntron® Heavy-Duty Electromechanical Feeders combine extra structural strength with durable components. The deep wing plates form a bridge between inlet and discharge suspension supports, providing extra strength for years of dependable service.

Feeder Features

- Operating frequency - 1100 VPM at 55.4 Hz
- Stroke: 0.25 - 0.30 inches
- Start and operate fully loaded or empty
- Dependable, flexible, easily adjustable
- Minimal component design to reduce adjustments and replacements due to wear loaded or empty

Screen Feed Box Liners

Screen Feed Box Liners are patterned for a direct replacement of the current liner configuration being used, or depending on the wear characteristics change the layout for maximum wear life. Liners have the ability to have various sized and shaped ceramics inserted to increase the longevity of the liner.



Screen Feed Box Liners

Screen Side Wear Liners

Screen Side Wear Liners are boxed in with mild steel or hard plate to prevent premature edge wear or damage. Bolt patterns, sizes, and thicknesses are fully customizable to increase the wear life for your operation. In house engineered to allow for an ease in duplication.



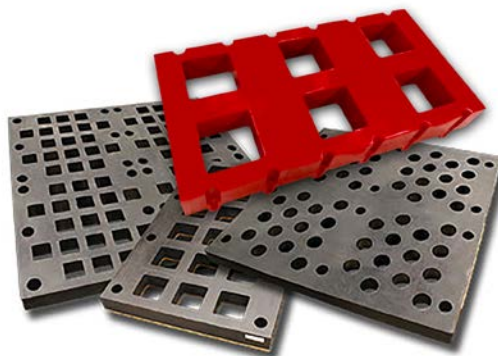
Screen Side Wear Liners

Screening

The role of screening in the processing flow is to size and separate material ahead of secondary and tertiary crushing circuits, and/or to size and separate material in preparation for final product stockpiling.

ASGCO® Rubber or Urethane Screen Panels deliver unmatched precision performance – dependable production even under adverse high impact operating conditions, or when handling the most abrasive and coarse material types for dry screening.

ASGCO® rubber or urethane screens are custom-made to fit your existing application, giving you low maintenance costs and high efficiency in applications that are too severe for conventional wire cloth.



Provide us access to take measurements and we will use our team of experienced professionals to custom design a solution for you.

Punch Plate Screens also available.

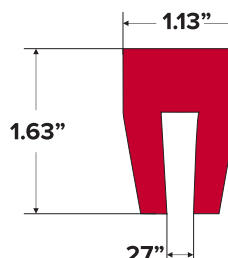
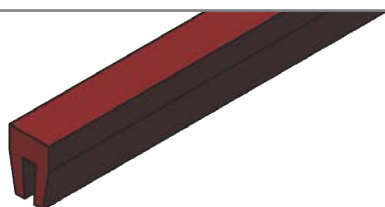
Urethane Bucker Backer Bar Channel

Also referred to as buffer strip, bucker-up strip, buffer channel and crown bar channel. Lasts 5 times longer than conventional rubber.

Legs are tapered slightly inward to aid in gripping the bucker up bar to prevent rolling.

- Available in 3/8" and 1/2" channel in 4ft strips
- Durometer 82

- Abrasion Resistant
- Resists cuts and tears
- Impact Resistant
- Less Maintenance
- Easy Installation



Aggregate & Mining Feed Box Liners Channel Rubber Accessories



Pennsylvania (HQ):
730 Bangor Rd
Nazareth, PA 18064
T. 610.821.0216
FX 610.778.8991

Maryland Branch:
798 Mariottsville Road
Mariottsville, MD 21104
T. 410.442.5122
FX 410.442.5188

Virginia Branch:
2371 Lanier Road
Rockville, VA 23146
T. 804.719.9442
FX 804.719.9441

West Virginia Branch:
183 Angle Road
Harper, WV 25851
T. 304.252.5260
FX 304.934.8188