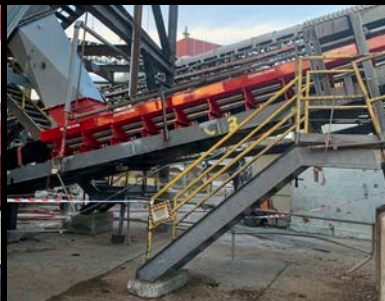


**PROVIDING THE WORLD'S MATERIAL HANDLING INDUSTRY  
WITH EFFICIENT, SAFE AND PRODUCTIVE "COMPLETE CONVEYOR SOLUTIONS".**



# **PRO-ZONE® ENCLOSED LOAD ZONE CONVEYOR SYSTEMS**



## Pro-Zone® Modular Enclosed Load Zone System

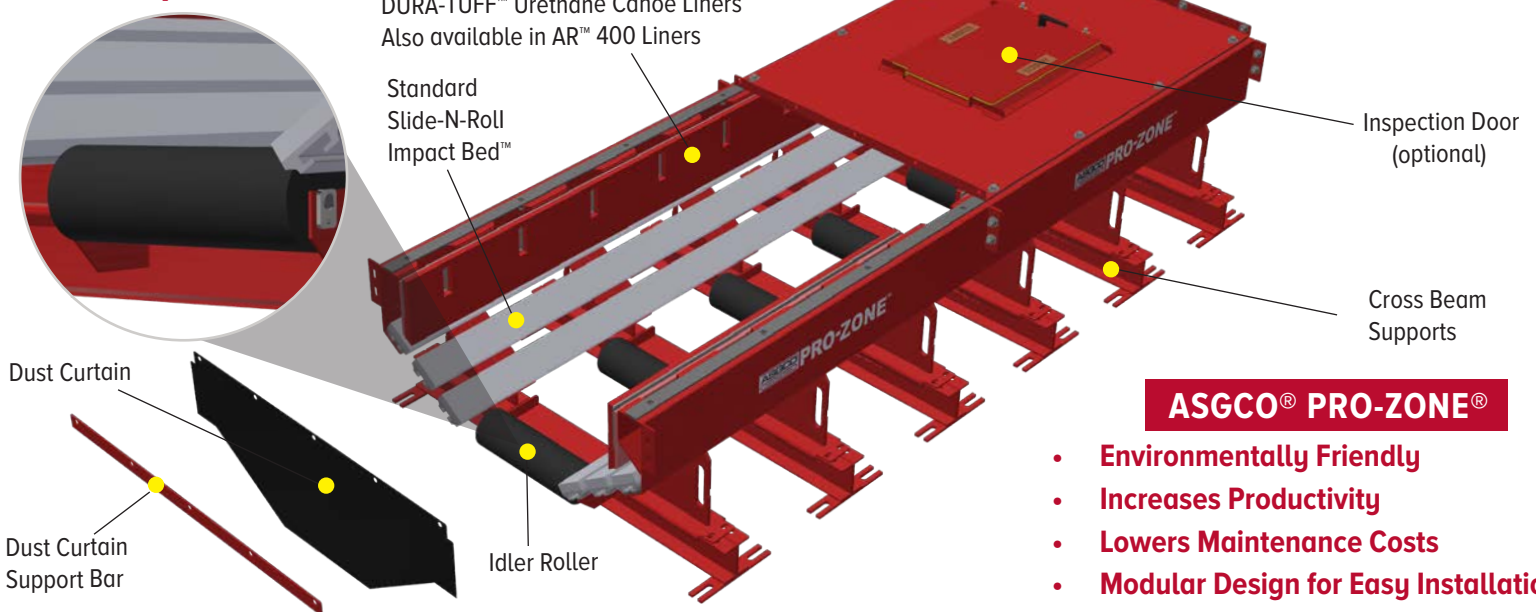
**Pro-Zone®** is a patented modular conveyor belt load-zone system that optimizes the sealing for air/dust tightness of the receiving conveyor belt. This “skirt-less”, fully self-contained system is comprised of our Slide-N-Roll beds with our removable, “slide-out” steel side supports with UHMW bars and easily removable center rolls. Walls, internal sealing system, dust curtains, back plate and flat lids completely enclose the entire system.

- **Environmentally Friendly** – due to significant reduction of airborne and fugitive dust.
- **Increased Productivity** – and longer conveyor belt life because the completely sealed load zone helps eliminate material turbulence and conveyor belt cover abrasion.
- **Lower Maintenance Costs** – by having a “skirt-less”, fully contained system that needs no adjustments of metal skirtboards or rubber skirting.
- **Modular Design** - can be installed in any combination of 4’ (1200mm) or 5’ (1500mm) lengths to completely cover load zone area. Quickly removable lids, slide-out side sections and removable center rolls aid in the installation and maintenance of the system.
- **Made in the USA** - completely engineered, designed, fabricated and stock in the USA.



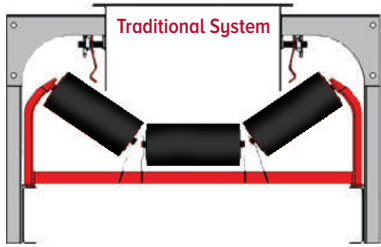
## ASGCO® PRO-ZONE®

*The world’s first advanced containment and dust control solution for conveyed bulk material products.*



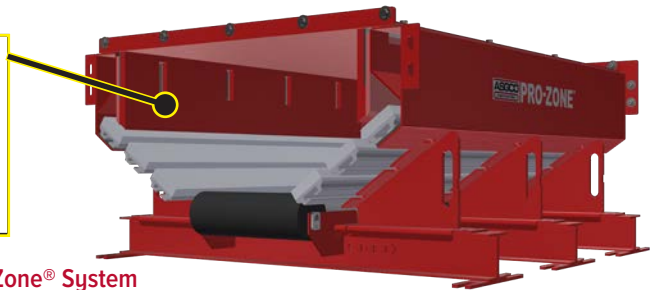
### ASGCO® PRO-ZONE®

- **Environmentally Friendly**
- **Increases Productivity**
- **Lowers Maintenance Costs**
- **Modular Design for Easy Installation**
- **Made in the USA!**

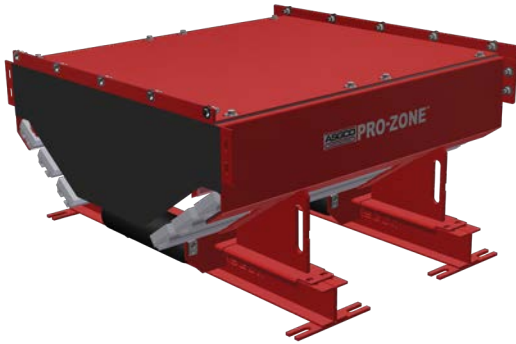


With internal DURA-TUFF™  
Urethane Canoe Liners option

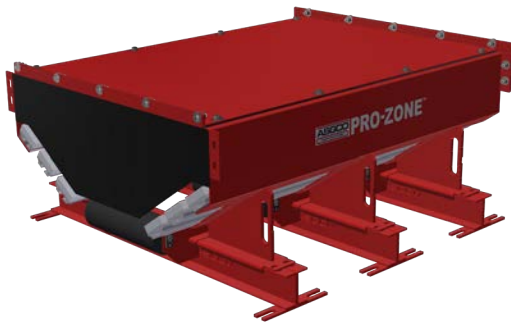
Also available in  
AR™ 400 Liners option



4' Pro-Zone® with 2 Supports



5' Pro-Zone® with 3 Supports



**ENVIRONMENTALLY FRIENDLY**

ASGCO®'S Pro-Zone® system provides the latest conveyor technology and engineering to solve coal dust and spillage environmental concerns and increase productivity.

**PROBLEM:** In today's coal fired power plants, it is important to keep coal dust and coal spillage in the load zone area to a minimum. Many plants struggle to keep these areas clean, due to not having enough time or man power to properly adjust skirt rubber or fix holes in the chutes. This coal spillage is expensive to remove and if not properly fixed, the coal piles will reoccur again and again.

**SOLUTION:** ASGCO® has developed the first advanced containment system for dust control solutions in the coal industry. ASGCO'S Pro-Zone® system optimizes the seal for air/coal dust tightness on the receiving conveyor belt. The system is fully self-contained and is comprised of our Slide-N-Roll Bed™, side enclosure guards and mounted angled hood. Inside the Pro-Zone® are dust curtains and an internal splash sealing rubber system to contain the coal dust.

**RESULT:** The ASGCO® Pro-Zone® has been in service at this coal fired power plant for about 8 months and has helped eliminate coal dust and spillage in the customers load zone area. The customer is very happy with the performance of the ASGCO® Pro-Zone® system and it has lowered his cleanup costs for that area.

