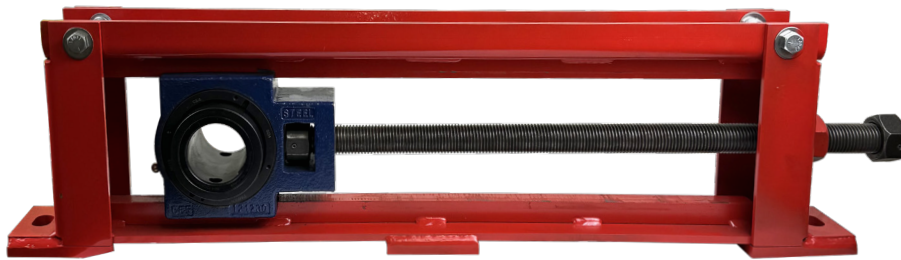


CENTER PULL TAKE-UP FRAME (CPTU)

TECHNICAL INFORMATION



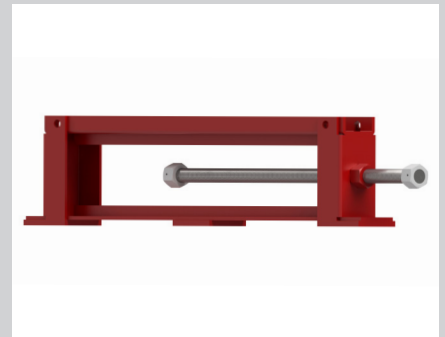
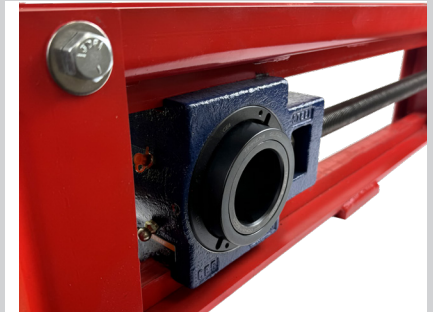
Maintaining proper tension on the belt is crucial to prevent inefficiencies caused by belt slippage at the drive pulley and reduce belt sag, which can affect the product life of the belt and components. **ASGCO®'s Center Pull Take-Up Frame (CPTU)** can provide tension to the belt throughout the conveyor system, extending the life of the belt, reducing maintenance costs, and increasing yield.



Available with **Dodge®** and/or **Timken®** bearings upon request.

FEATURES AND BENEFITS

- Versatile for use in short heavy duty conveyors applications where high belt tension is required.
- The fully threaded rod/screw is directly attached to the center of the housed bearing unit.
- Center Pull bearings can be supplied with the frame upon request.
- Foot-mounted configuration



TAKE-UP STYLE					
	Bearing Style			Mounting Position	
	Pillow Block	Wide Slot	Top Angle	Top	Side
CPTU (Center Pull)		X		X	

BEARING BORE BASED ON PULLEY SHAFT SIZE									
	1"	2"	3"	4"	5"	6"	7"	8"	9"
CPTU (Center Pull)	1-7/16" - 4-15/16"								

TRAVEL LENGTH BASED ON CONVEYOR LENGTH											
Length of Conveyor	10'	20'	25'	50'	75'	100'	125'	150'	175'	200"	225"
Take-Up Travel Length (- 3% Stretch)	4"	7"	9"	18"	27"	36"	45"	54"	63"	72"	81"

COMMON COMPATIBLE CPTU STYLE BEARINGS*		
ASGCO Part Number	WSTU Type E	WSTU S2000
CPTU308	1 7/16	1 7/16
CPTU400	1 15/16	1 15/16
CPTU408	2 3/16	2 3/16
CPTU502	2 7/16	2 7/16
CPTU515	2 15/16	2 15/16
CPTU613	-	3 15/16
CPTU810	-	3 15/16

EQUIVALENT OEM PART NUMBERS			
Martin	Dodge	Precision	Superior
MCP308	CP308	PCP108	TUCP-308
MCP400	CP400	PCP200	TUCP-400
MCP408	CP408	PCP203	TUCP-408
MCP502	CP502	PCP208	TUCP-502
MCP515	CP515	PCP300	TUCP-515
MCP613	CP613	PCP308	TUCP-613
MCP810	CP810	PCP400	TUCP-810

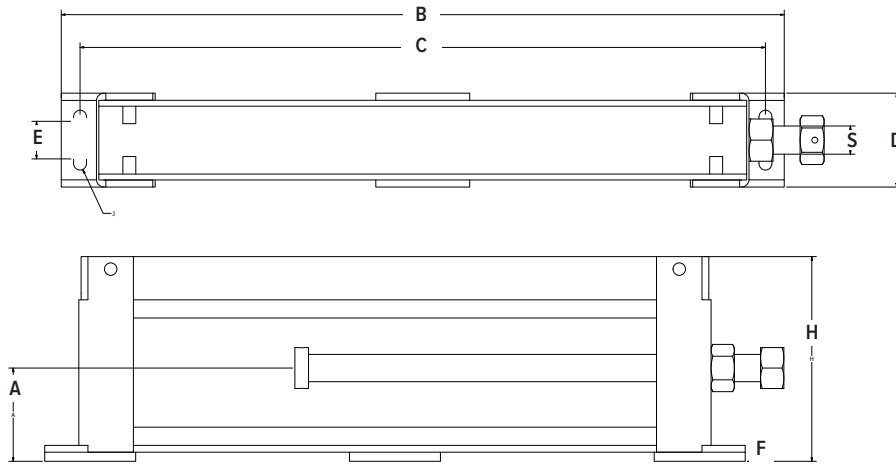
Need Solutions... to improve efficiency, safety and productivity? **ask... ASGCO®**

www.asgco.com | 800.344.4000

@2024 ASGCO® "Complete Conveyor Solutions"



CENTER PULL TAKE-UP FRAME (CPTU)



CENTER PULL TAKE-UP FRAME (CPTU)										
Part Number	Nominal Travel	A	B	C	D	E	F	H	J	S
ASG-CPTU-308-12	12	3.438	28	26	3	-	0.688	7.000	0.500	0.750
ASG-CPTU-308-18	18		34	32						
ASG-CPTU-308-24	24		40	38						
ASG-CPTU-308-30	30		46	44						
ASG-CPTU-308-36	36		52	50						
ASG-CPTU-400-12	12	3.938	29.5	27.5	4	-	0.813	8.625	0.625	1.000
ASG-CPTU-400-18	18		35.5	33.5						
ASG-CPTU-400-24	24		41.5	39.5						
ASG-CPTU-400-30	30		47.5	45.5						
ASG-CPTU-400-36	36		53.5	51.5						
ASG-CPTU-408-12	12	4.438	29.5	27.5	4	-	0.688	9.250	0.625	1.125
ASG-CPTU-408-18	18		35.5	33.5						
ASG-CPTU-408-24	24		41.5	39.5						
ASG-CPTU-408-30	30		47.5	45.5						
ASG-CPTU-408-36	36		43.5	51.5						
ASG-CPTU-502-12	12	4.375	30.5	28.5	4	-	0.813	9.500	0.750	1.250
ASG-CPTU-502-18	18		36.5	34.5						
ASG-CPTU-502-24	24		42.5	40.5						
ASG-CPTU-502-30	30		48.5	46.5						
ASG-CPTU-502-36	36		54.5	52.5						
ASG-CPTU-515-12	12	5.125	32.5	30.5	5	2	0.875	11.156	0.625	1.500
ASG-CPTU-515-18	18		38.5	36.5						
ASG-CPTU-515-24	24		44.5	42.5						
ASG-CPTU-515-30	30		50.5	48.5						
ASG-CPTU-515-36	36		56.5	54.5						
ASG-CPTU-613-12	12	5.625	34.25	32	5	2	1.000	12.062	0.750	1.750
ASG-CPTU-613-18	18		40.25	38						
ASG-CPTU-613-24	24		46.25	44						
ASG-CPTU-613-30	30		52.25	50						
ASG-CPTU-613-36	36		58.25	56						
ASG-CPTU-810-12	12	7.000	38.5	36	6	2.5	1.250	14.750	0.750	2.000
ASG-CPTU-810-18	18		44.5	42						
ASG-CPTU-810-24	24		50.5	48						
ASG-CPTU-810-30	30		56.5	54						
ASG-CPTU-810-36	36		62.5	60						

*** All dimensions are in inches.

Need Solutions... to improve efficiency, safety and productivity? **ask... ASGCO®**

www.asgco.com | 800.344.4000

@2024 ASGCO® "Complete Conveyor Solutions"

