

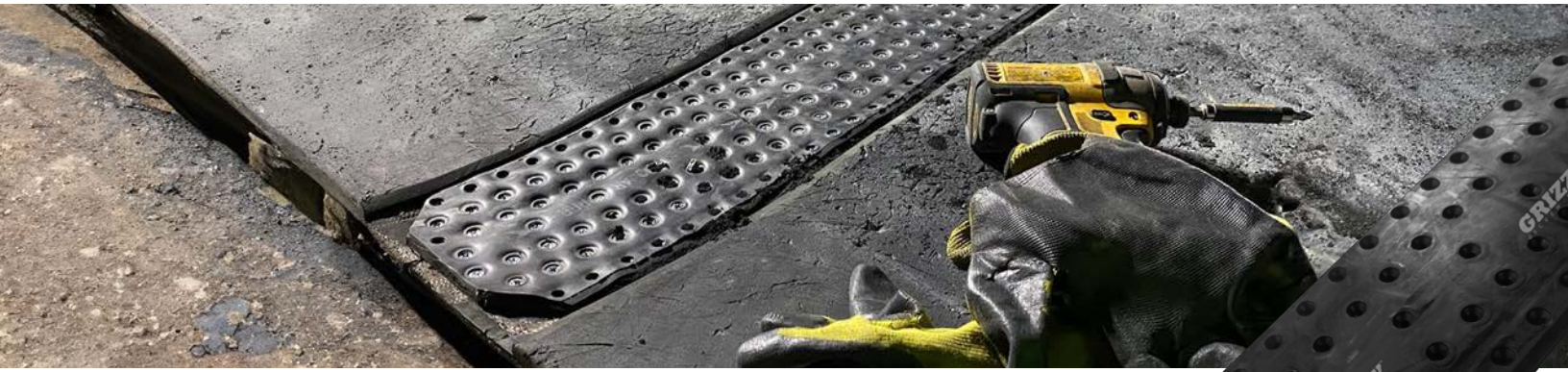
GRIZZLY™ SCREW-SPLICE



GRIZZLY™ SCREW-SPLICE

INNOVATIVE SOLUTION FOR FAST CONVEYOR BELT SPLICING





GRIZZLY™
SCREW-SPLICE

A strong and flexible rubber splice that screws directly on the conveyor belt, with great accuracy and precision.

The Grizzly™ Screw-Splice conveyor belt splicing and fastening system delivers power, strength, and flexibility in every application. It is the perfect fastener to save you time and money while allowing a quick, accurate, and easy installation. ASGCO®'s Grizzly™ Screw-Splice outperforms competitor's products by offering more tensile strength and durability.

Compared to traditional metal fasteners, this splice is much stronger, wears less, and has a low-profile silhouette that is easier on the components of your conveyor systems. The Grizzly™ Screw-Splice includes specialized self-tapping and self-drilling screws that uphold the toughness of the conveyor belt by passing through the belt carcass instead of creating holes, which significantly compromises strength.

FEATURES & BENEFITS

- Quick installation
- No expensive equipment required
- No drilling and no template
- Wear and cut resistant
- High tensile strength
- Strong & Flexible – higher PIW
- combined with smaller pulley diameter requirements than other fasteners
- High-heat belt up to 400°F (204°C)
- Compatible with conveyor belt scrapers
- Leak-proof – no hinge pin to allow material sifting
- Low temp to -20°F (-28°C)
- Available per inch or in complete roll length

GRIZZLY™ SCREW-SPLICE RUBBER TOP COVER



ALSO AVAILABLE DURA-TUFF™ GRIZZLY™ SCREW-SPLICE URETHANE TOP COVER

SCREW LENGTH BASED ON BELT THICKNESS

Thickness	mm	35	63	65	80	85	100	180	200
3/16"	4.8	10	10		12	14			
1/4"	6.4	12	12		14	16			
5/16"	7.9	14	14		14	16			
3/8"	9.6	16	16		18	20	21	22.5	
7/16"	11.1	16	16		18	20	22.5	22.5	
1/2"	12.7	18	18		20	22	24	24	
9/16"	14.3	20	20		22	24	24	25.5	
5/8"	15.9					24	25.5	28.5	
11/16"	17.5						28.5	30	
3/4"	19.1						30	30	



Available per inch or in complete roll length

INNOVATIVE SOLUTION FOR FAST CONVEYOR BELT SPLICING.

SPECIFICATIONS								
Thickness	35	63	65	80	85	100	180	200
Belt Thickness	5/32" to 1/2" 3.97 to 12.7 mm	5/32" to 1/2" 3.97 to 12.7 mm	5/32" to 1/2" 3.97 to 12.7 mm	5/32" to 19/32" 3.97 to 15.08 mm	5/32" to 19/32" 3.97 to 15.08 mm	5/32" to 19/32" 3.97 to 15.08 mm	9/32" to 13/16" 7.14 to 20.64 mm	5/8" - 7/8" 16 to 22 mm
Max. Belt Strength (N/mm)	630	630	630	800	800	1,000	1,800	2,000
Max. Belt Tension (PIW)	200	375	375	440	440	700	1,050	1,200
Min. Pulley (.4 Bias Splice)	6" 150 mm	8" 200 mm	8" 200 mm	12" 304 mm	12" 304 mm	14" 355 mm	24" 609 mm	30" 762 mm
Top Thickness	3/16" - 1/4" 4.76 mm - 6mm	3/16" - 1/4" 4.76 mm - 6mm	3/16" - 1/4" 4.76 mm - 6mm	1/4" - 5/16" 6.35 mm - 8 mm	1/4" - 5/16" 6.35 mm - 8 mm	5/16" 8 mm	5/16" 8 mm	3/8" 9.52 mm
Bottom Thickness	1/8" 3.17 mm	1/8" 3.17 mm	1/8" 3.17 mm	3/16" 4.76 mm	3/16" 4.76 mm	3/16" 4.76 mm	3/16" 4.76 mm	3/16" 4.76 mm
Roll Length	82' 984" (25000 mm)	82' 984" (25000 mm)	82' 984" (25000 mm)	82' 984" (25000 mm)	82' 984" (25000 mm)	82' 984" (25000 mm)	82' 984" (25000 mm)	50' 600" (15000 mm)



Grizzly™ Screw-Splice

Available per inch or in complete roll length

- Abrasion Resistant (AR)
- Heat Resistant (HTR)
- Low Temperature (LT)
- Bare Back (BB)
- Stainless Steel (SS)
- Moderately Oil Resistant (MOR)
- Straight-Warp (SW)



DURA-TUFF™

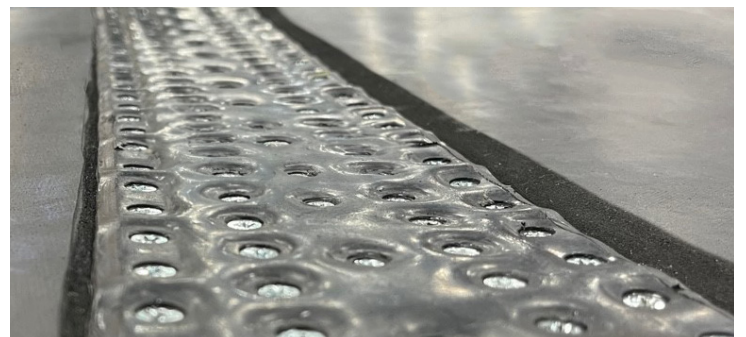
Grizzly™ Screw-Splice

Available per inch

- Abrasion Resistant (AR)

Part Number	Type	Belt Thickness	PIW
ASG-GSS-63-AR	AR	5/32" to 1/2" (3.97 to 12.7 mm)	375
ASG-GSS-63-HTR	HTR	5/32" to 1/2" (3.97 to 12.7 mm)	375
ASG-GSS-63-AR-BB	BB	5/32" to 1/2" (3.97 to 12.7 mm)	375
ASG-GSS-63-AR-SS	SS	5/32" to 1/2" (3.97 to 12.7 mm)	375
ASG-GSS-63-MOR	MOR	5/32" to 1/2" (3.97 to 12.7 mm)	375
ASG-GSS-63-AR-SW	SW	5/32" to 1/2" (3.97 to 12.7 mm)	375
ASG-GSS-65-LT	LT	5/32" to 1/2" (3.97 to 12.7 mm)	375
ASG-GSS-80-AR	AR	5/32" to 19/32" (3.97 to 15.08 mm)	440
ASG-GSS-80-HTR	HTR	5/32" to 19/32" (3.97 to 15.08 mm)	440
ASG-GSS-85-LT	LT	5/32" to 19/32" (3.97 to 15.08 mm)	440
ASG-GSS-100-AR	AR	5/32" to 19/32" (3.97 to 15.08 mm)	700
ASG-GSS-100-HTR	HTR	5/32" to 19/32" (3.97 to 15.08 mm)	700
ASG-GSS-100-MOR	MOR	5/32" to 19/32" (3.97 to 15.08 mm)	700
ASG-GSS-100-AR-SW	SW	5/32" to 19/32" (3.97 to 15.08 mm)	700
ASG-GSS-180-AR	AR	9/32" to 13/16" (7.14 to 20.64 mm)	1050
ASG-GSS-180-HTR	HTR	9/32" to 13/16" (7.14 to 20.64 mm)	1050
ASG-GSS-200-AR	AR	5/8" - 7/8" (.625 to .875 mm)	1200

Part Number	Type	Belt Thickness	PIW
ASG-GSS-63-AR-DT	AR	5/32" to 1/2" (3.97 to 12.7 mm)	360
ASG-GSS-80-AR-DT	AR	5/32" to 19/32" (3.97 to 15.08 mm)	450
ASG-GSS-100-AR-DT	AR	5/32" to 19/32" (3.97 to 15.08 mm)	650
ASG-GSS-180-AR-DT	AR	9/32" to 13/16" (7.14 to 20.64 mm)	1200
ASG-GSS-200-AR-DT	AR	5/8" - 7/8" (.625 to .875 mm)	1200



READY TO INSTALL

The Grizzly™ Screw-Splice is pre-assembled with the spacers installed, so that the top cover and the bottom cover holes lineup. The Grizzly™ Screw-Splice is delivered with the appropriate number of screws and PZ bits to install the screw splice (matched by inches ordered). It is available in any length between 12 inches up to the length of a roll.

AVAILABLE RUBBER COMPOUND TYPES

<p>Abrasion Resistant AR</p> <p>Our standard highly abrasion resistant rubber compound used in quarries, mining, recycling and other high impact and abrasion applications.</p>	<p>Heat Resistant HTR</p> <p>High temperature, 400°F (204°C) rubber compound used in cement plants, foundries, chemical processing and other high temperature applications.</p>	<p>Low Temperature LT</p> <p>Our low temperature resistant rubber compound is ideal for conveying bulk material at -20°F (-28°C).</p>	<p>Bare Back BB</p> <p>Low friction fabric backed with rubber top cover suitable for steel or low friction slider bed applications.</p>	<p>Stainless Steel SS</p> <p>Non-magnetic stainless steel or magnetic stainless steel (for special application).</p>	<p>Moderately Oil Resistant MOR</p> <p>Engineered to endure exposure to oils with minimal swelling or deterioration—ideal for diverse applications.</p>	<p>Straight-Warp SW</p> <p>Highly abrasion-resistant rubber compound combined with a Straight Warp carcass to provide a 60% increase in breaking strength for added durability and performance in demanding conditions.</p>
---	---	---	---	--	---	---



Grizzly™ Screw-Splice



DURA-TUFF™ Grizzly™ Screw-Splice



DURA-TUFF™ Grizzly™ Screw-Splice



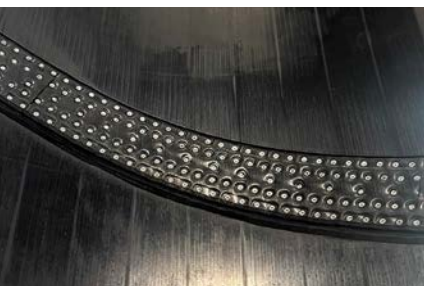
Grizzly™ Screw-Splice



Grizzly™ Screw-Splice



DURA-TUFF™ Grizzly™ Screw-Splice



Grizzly™ Screw-Splice



DURA-TUFF™ Grizzly™ Screw-Splice



Grizzly™ Screw-Splice