

# GRIZZLY™ “STRAIGHT-WARP” SCREW-SPLICE

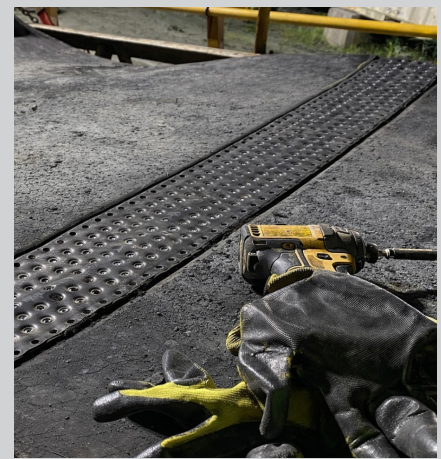
DELIVERS UP TO 1,421.2 PIW BREAKING STRENGTH ON THE SW 63 SERIES AND UP TO 2,088 PIW BREAKING STRENGTH ON THE SW 100 SERIES FOR ENHANCED RELIABILITY

**ASGCO**  
Complete Conveyor Solutions

The Grizzly™ Screw-Splice is a strong and flexible rubber splice that screws directly on the conveyor belt, with great accuracy and precision.

The Grizzly™ Straight-Warp Screw-Splice conveyor belt splicing and fastening system delivers exceptional strength, durability, and performance in demanding applications. Engineered with a highly abrasion-resistant rubber compound combined with a Straight-Warp carcass, it provides up to a 60% increase in breaking strength for enhanced reliability with a lower profile. This advanced design ensures superior durability and long-lasting performance in tough operating conditions while maintaining quick, accurate, and easy installation.

ASGCO®'s Grizzly™ Screw-Splice delivers superior tensile strength and durability, making it the best available on the market.



GRIZZLY™ Screw-Splice Straight-Warp Specifications				
SERIES	Plied 63	SW 63	Plied 100	SW 100
Top Thickness (in)	0.204	0.189	0.295	0.29
Bottom Thickness (in)	0.185	0.167	0.227	0.201
Breaking Strength (PIW)	855.4	1421.2	1314.7	2088.0

## FEATURES AND BENEFITS

- Quick installation
- No expensive equipment required
- No drilling and no template
- Wear and cut resistant
- High tensile strength
- Strong & Flexible – higher PIW combined with smaller pulley diameter requirements than other fasteners
- High-heat belt up to 400°F (204°C)
- Compatible with conveyor belt scrapers
- Leak-proof – no hinge pin to allow material sifting
- Low temp to -20°F (-28°C)
- Available per inch or in complete roll length



Available per inch or in complete roll

Need Solutions...to improve efficiency, safety and productivity? ask... ASGCO®

www.asgco.com | 800.344.4000

**ASGCO**  
Complete Conveyor Solutions